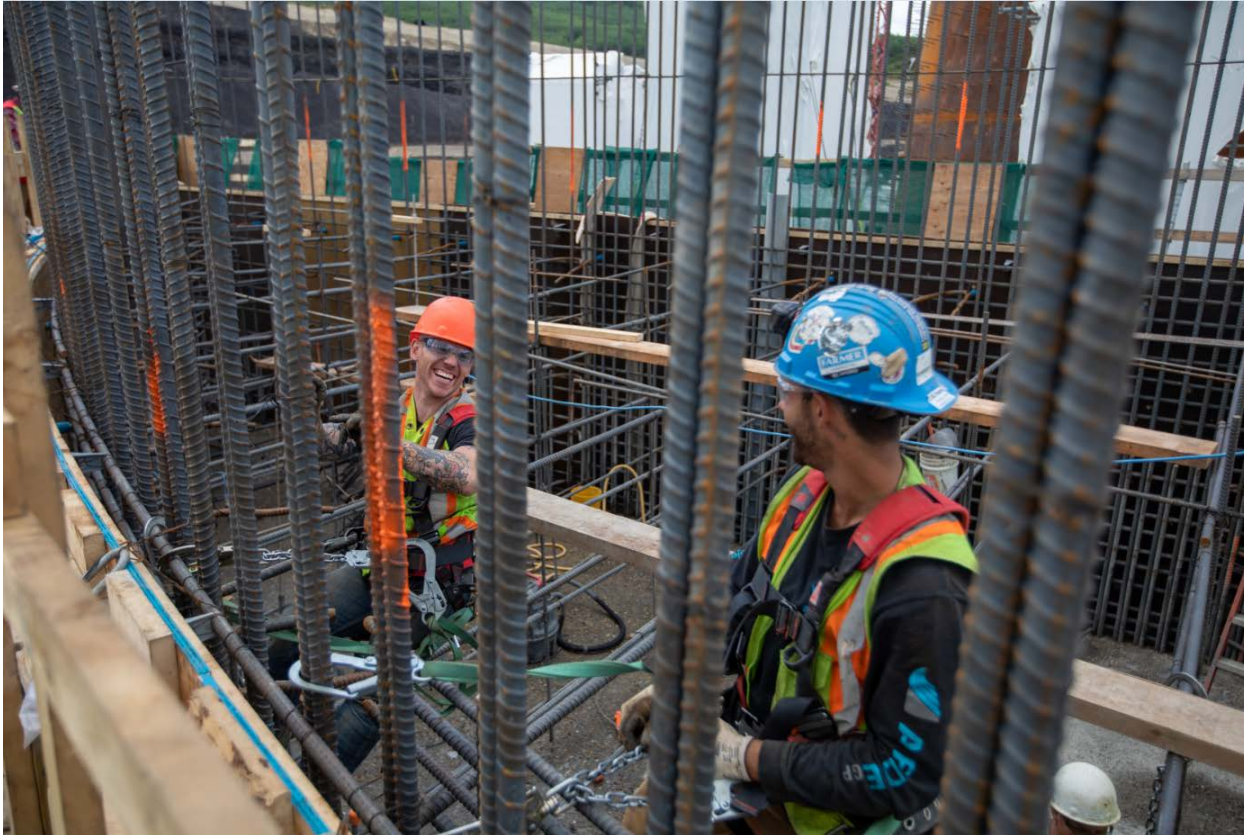


Site C Construction Schedule: October 14 - 27



Workers install rebar at the powerhouse. See more project photos in the [image gallery](#).

Dam site area – north bank and south bank

- [Construction continues](#) on a chain-up area for project vehicles on Old Fort Road, near the Gate B entrance to Site C.
- Noxious weed inventory is nearing completion.
- Large sections of penstock pipe will be transported along Old Fort Road. This requires occasional overnight rolling closures, with short delays to traffic. Check our website [for upcoming deliveries](#).
- Contractors will continue to mobilize equipment and materials to site. This includes deliveries by rail and road.
- Contractors are continuing construction and operations in their work areas: main civil works, generating station and spillways civil works, turbines and generators, and substation. Activities include drilling, blasting, crushing, earth moving, tunnelling, concrete placement, and road maintenance. Tower and mobile cranes will be used.
- Excavation, including in-river excavation, will progress on both banks of the Peace River.

- Construction activities will continue. This could include drilling, blasting, crushing, earth moving, tunnelling, concrete placement, and road maintenance.

85th Avenue Conveyor

- Conveyor system testing continues.
- Work will use heavy machinery, resulting in noise, dust and vibration. Typical work hours are 7 am to 7 pm, seven days a week. Road sweeping and dust suppression will occur.

Highway 29

- **New:** Geotechnical drilling will occur at Halfway River.
- **New:** BC Hydro has [applied to Transport Canada](#) for an approval for the Highway 29 bridge crossing at Cache Creek under the *Canadian Navigable Waters Act*.
- Construction at Cache Creek East embankment continues. This includes vegetation removal, excavation of existing soils, placement and grading of granular materials and site drainage.
- Cache Creek West construction continues. This includes grading, road construction, and drainage work.
- Portage Mountain Quarry operations will continue. This includes haul road capping, rip rap and road material production, sorting and stockpiling. Upgrades may occur to the Portage Mountain access road.
- [Visit our website](#) for more Highway 29 schedules, maps and construction updates.

Reservoir area

- **New:** Debris and wood waste removal may [resume](#). Wood waste will be chipped, mulched, bucked into logs, or burned. Burning may take place, as permitted by ground conditions, the fire danger rating, and venting conditions.
- **New:** Clearing will resume for the next month on the north bank of the eastern reservoir. Helicopters may be used.
- Forestry and access road data collection and site investigations continue.
- Clearing activities continue on islands in the Peace River, east of Halfway River. Boaters are asked to stay clear of the work area.
- Clearing on the south banks of the eastern reservoir continues. Helicopters will be used.
- Archaeological investigations may occur in support of reservoir access road design and construction.

Transmission works

- **New:** Debris and wood waste removal [has resumed](#). Wood waste will be chipped, mulched, bucked into logs, or burned. Burning may take place, as permitted by ground conditions, the fire danger rating, and venting conditions.
- Transmission line construction will continue. This includes construction of stringing sites, helical pile foundation installation, tower assembly and lifting and placing on foundations. Work will continue on the western portion of the transmission line, and will access the Peace Canyon and Peace Hill, Trapper Main, Boucher Lake and Medicine Woman road areas.
- Maintenance work will continue on roads that provide access to the transmission corridor.

CONSTRUCTION BULLETIN

- Clearing activities will occur on the western portion of the transmission line. This includes hand-falling and hauling logs to local mills. Wood waste will be chipped, mulched, spread as coarse woody debris or hauled off site.
- Road construction will continue in various locations on the transmission line right-of-way. This includes but is not limited to the Peace Canyon and Peace Hill, Trapper Main, Boucher Lake and Medicine Woman road areas.

Other areas

- [Geotechnical drilling](#) to install groundwater monitors continues in Hudson's Hope.
- Work is occurring downstream of the dam site for the Peace River side channel enhancements.
- Aggregate and riprap production will continue in West Pine Quarry. We will transport material by rail to the dam site and by truck to Highway 29.
- Construction of the temporary worker's camp on the south bank continues.

WHAT TO EXPECT

Work will take place during the day, night, and on the weekend, until the project is completed. During this time, residents can expect:

Traffic – please use caution and obey safety signage

- **Old Fort Road**
 - Traffic delays due to the construction of a chain-up area.
 - Near Gate A to the dam site, drivers may encounter loose gravel and increased commercial traffic. Gravel sections have also developed near 85th Avenue.
 - Overnight deliveries of penstock pipes along Old Fort Road will result in rolling road closures and traffic delays. Deliveries will occur every one or two weeks.
 - Due to equipment delivery, there may be occasional short road closures along Old Fort Road from Tahltan Road to Gate B.
- **Highway 29:** Construction-related equipment will travel along Highway 29. Learn more at drivebc.ca.
- **Other areas:** Trucks with heavy loads will be accessing the dam site and other project areas, using public and resource roads.

Equipment

- Heavy machinery will be in the transmission line corridor. Please stay clear of the work areas.
- Helicopters and commercial drones may be used to support investigative and construction works.

Noise and vibration

- Some noise and vibration may occur near the dam site and work areas, including the quarries.

Other

- During noxious weed inventories, crews will travel through areas to capture data. Areas where herbicide has been applied will be signposted.
- Please stay clear of active in-river work areas along the Peace and Moberly rivers. These areas are identified with signage and markings.

[Sign up for construction bulletins](#) and follow us [@sitecproject](#) on Twitter to receive updates.