

Navigation Protection Program (NPP)
820-800 Burrard Street
Vancouver BC
V6Z 2J8

Our file: **2019-500334**

APPROVAL

APPLICANT: **BC Hydro and Power Authority (BC Hydro)**
333 Dunsmuir Street
13th Floor
Vancouver, BC
V6B 5R3

SITE LOCATION: **Located over Peace River, approximately at 56° 6' 24.32" N, 121° 48' 27.94" W, on unsurveyed foreshore or land covered by water being part of the bed of Peace River, Section 10, Section 11, Section 13, Section 14 and Section 15, Township 82, Range 25, Peace River District, in Hudson's Hope, in the Province of British Columbia.**

WORK:

- **Causeway**

As per the application (detailed above) to the Minister of Transport, submitted pursuant to the *Canadian Navigable Waters Act*, for an approval of the work per the attached fourteen (14) plans, the Minister hereby approves the work pursuant to subsection 7(13) "Approval after activity begins or is completed", in accordance with the following terms and conditions:

1. The CNWA Approval and its Terms and Conditions shall be posted at an easily accessible place at the worksite and be provided to the contractor conducting the work.
2. The owner shall provide information about the causeway location and side channel obstruction using the Boater Communications Protocol, and post the information on the owner website, on a page related to the project.
3. Upon commencement of the construction of the causeways, install and maintain warning signs, advising of the obstruction of the side channel and an arrow indicating the direction of the main channel. Signs shall be a minimum of 72" x 48", a white background with black lettering, the size of the text shall be at least 15cm tall with the word "WARNING" at 1.5 times the size of the message text. Signs shall be placed on either side of the side channel at the upstream and downstream confluence with the main Peace River channel.

WARNING
OBSTRUCTION AHEAD
KEEP TO THE MAIN CHANNEL



4. During construction, the outermost extent of each causeway above the surface shall be marked with orange Hi-visibility markers on the upstream and downstream corners.
5. During construction, the outermost extent of each causeway above the surface shall be marked with a flashing yellow light on the upstream and downstream corners.



Our file: **2019-500334**

6. During construction of the causeways, machinery left in the water during periods of darkness or limited visibility shall be marked with a flashing yellow light, visible to upstream and downstream traffic.

**SIGNED on September 5, 2023
at the NPP regional office of Pacific**

C=CA, O=GC, OU
=TC-TC, CN="
Leung, Eric"
2023.09.05
15:23:02-07'00'

Eric Leung
NPP Officer
Programs Group
Transport Canada
Pacific Region
For the Minister of Transport

Path: X:\ArcGIS\Projects\Permitting\Construction\Highway\16_1016_N11_00556.mxd



Reviewed / Examiné
Page 14 of 14
2019-500334
NOV 25 2019
By/par: JOHN LEEDEN

Navigation Protection Program /
Programme de protection de la navigation



Map Notes
1. Datum NAD83
2. Projection UTM Zone 10N
3. Base Data Province of B.C.
4. Orthophotos created from 1:40,000 photos taken Sep. 10th 2007.

Legend

- Highway Realignment Centerline
- ▭ Highway Realignment Right-of-Way
- ▭ Causeway
- ▭ High Water Mark (445.8masl)



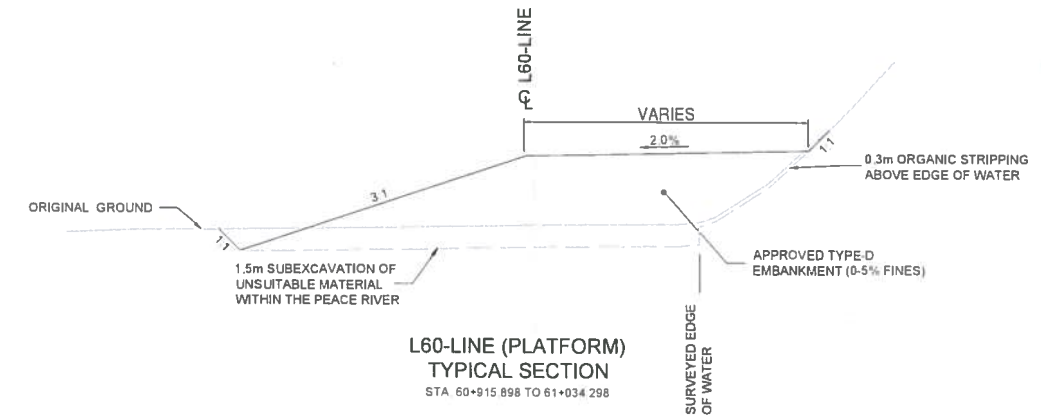
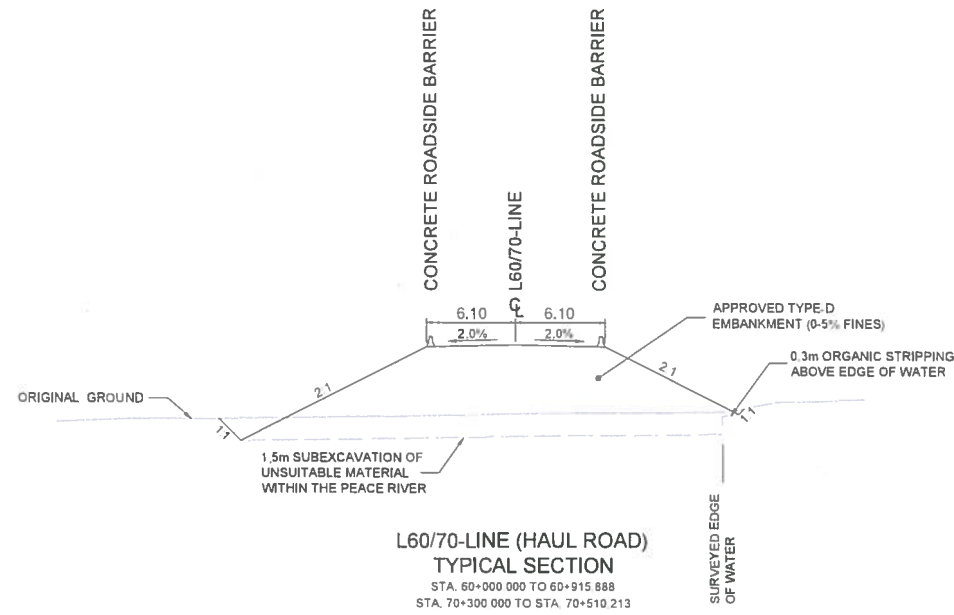
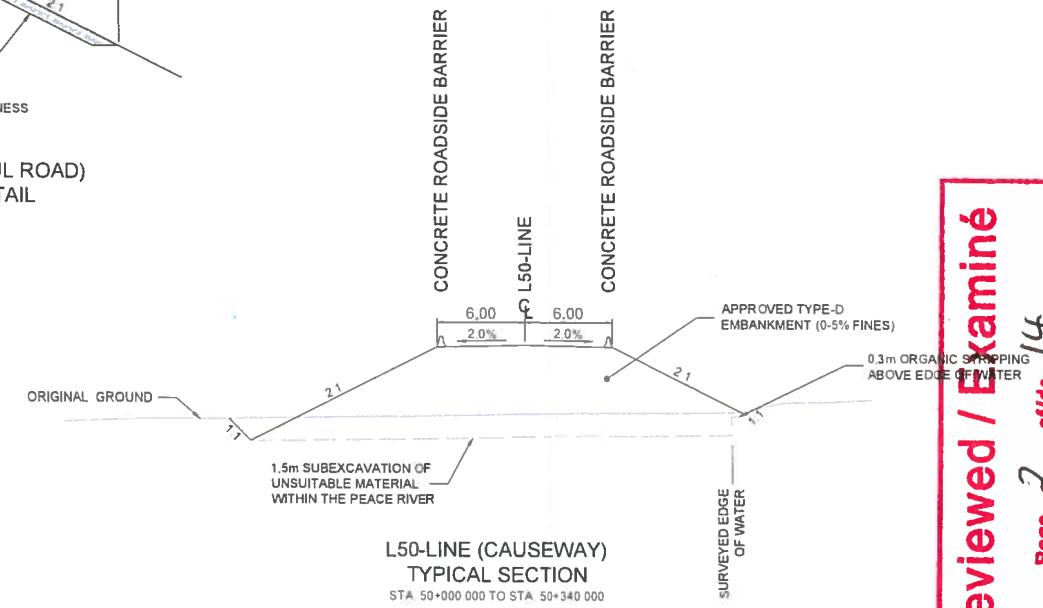
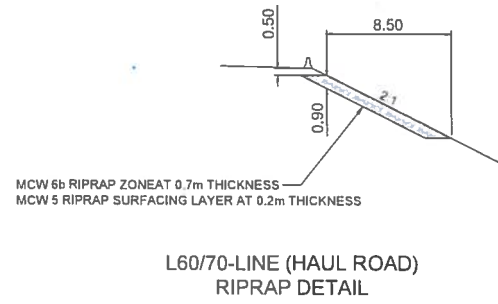
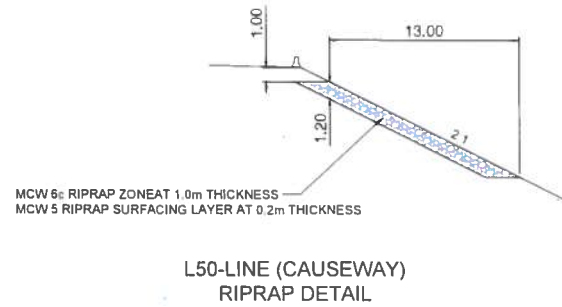
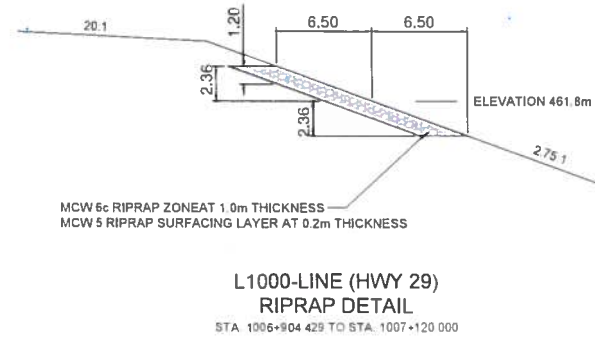
BC Hydro

**Highway 29 Realignment
Lynx Creek East**

Date	Jun 27, 2019	DWG NO	1016-N11-00556	R 0
------	--------------	--------	----------------	-----

© BC Hydro 2019 - all rights reserved. This map is for information purposes only and accuracy is not guaranteed.

Construction of the Site Clearance Erosion Project is subject to required regulatory and permitting approvals.



Reviewed / Examiné
Page 2 of 14
2019-500334
NOV 25 2019
By/par: **JOHN LEEDEN**
Navigation Protection Program /
Programme de protection de la navigation

NOTE: EMBANKMENT SLOPES SHOWN ARE ANTICIPATED CONSTRUCTION SLOPES AND ARE SUBJECT TO CHANGE WITH GEOTECHNICAL RECOMMENDATIONS

FOR REFERENCE ONLY

DRAFT

FOR INFORMATION ONLY - JUNE 25, 2019

<p>BINNIE Your Challenges. Our Solutions. Build with Binnie.</p>	<p>R.F. BINNIE & ASSOCIATES LTD. 205 - 4946 Canada Way, Burnaby, BC V5G 4H7 TEL 604 420-1723 BINNIE.com</p>	<p>MINISTRY OF TRANSPORTATION AND INFRASTRUCTURE</p>																																													
		<p>TYPICAL SECTIONS HIGHWAY NO. 29 LYNX CREEK EAST EARLY WORKS</p>																																													
<p>SCALE 0 2 1 250 12m CAD FILENAME: L1000A21-13.DWG DATE: 2019-06-24</p>		<p>DESIGNED: Z. RICHETTI DATE: JUNE 2019 QUALITY CONTROL: J. MANKOWSKA DATE: JUNE 2019 QUALITY ASSURANCE: J. NORRIS DATE: JUNE 2019 DRAWN: Z. RICHETTI DATE: JUNE 2019</p>																																													
<table border="1"> <thead> <tr> <th>REV</th> <th>DATE</th> <th>REVISIONS</th> <th>SIGNATURE</th> </tr> </thead> <tbody> <tr><td> </td><td> </td><td> </td><td> </td></tr> <tr><td> </td><td> </td><td> </td><td> </td></tr> <tr><td> </td><td> </td><td> </td><td> </td></tr> <tr><td> </td><td> </td><td> </td><td> </td></tr> <tr><td> </td><td> </td><td> </td><td> </td></tr> <tr><td> </td><td> </td><td> </td><td> </td></tr> <tr><td> </td><td> </td><td> </td><td> </td></tr> <tr><td> </td><td> </td><td> </td><td> </td></tr> <tr><td> </td><td> </td><td> </td><td> </td></tr> <tr><td> </td><td> </td><td> </td><td> </td></tr> </tbody> </table>		REV	DATE	REVISIONS	SIGNATURE																																									<p>SENIOR DESIGNER: _____ DATE: _____</p>	
REV	DATE	REVISIONS	SIGNATURE																																												
<p>FILE NUMBER 19-0288</p>	<p>PROJECT NUMBER 37504-0000</p>	<p>REV 3</p>	<p>DRAWING NUMBER -R3-336-302</p>																																												

THE SOUTH EAST 1/4 OF SECTION 15
TOWNSHIP 82 RANGE 25 WEST OF THE
6TH MERIDIAN PEACE RIVER DISTRICT
EXCEPT PLANS 21821 AND 23984

BCH ID: 268.1
PRIVATE LAND
PID: 014-926-431

THAT PART OF LEGAL
SUBDIVISION 5 SECTION
14 TOWNSHIP 82
RANGE 25 WEST OF
THE 6TH MERIDIAN
PEACE RIVER DISTRICT
LYING WEST OF THE
PEACE RIVER EXCEPT
PLAN 21821

BCH ID: 265.1
PRIVATE LAND
PID: 016-621-875

BCH ID: 263
CROWN LAND
PIN: 8638261

THAT PART OF THE SOUTH EAST 1/4
OF SECTION 15 TOWNSHIP 82 RANGE
25 WEST OF THE 6TH MERIDIAN PEACE
RIVER DISTRICT AS SHOWN ON PLAN
23984, EXCEPT PLAN 21821

LIMIT OF EARLY WORKS
P.O.T. 1006+210.000

TIE TO EXISTING

REMOVE EXISTING FENCE

L1000-LINE

HIGHWAY 29

LIMIT OF CONSTRUCTION
P.O.T. 50+000.000

TIE TO L1000 EARLY WORKS EMBANKMENT

PEACE RIVER

Reviewed / Examiné

Page 4 of 14
2019-500334
NOV 25 2019

By/par: JONN LEEDEN

Navigation Protection Program /
Programme de protection de la navigation

THAT PART OF LEGAL SUBDIVISION 4
SECTION 14 TOWNSHIP 82 RANGE 25
WEST OF THE 6TH MERIDIAN PEACE RIVER
DISTRICT LYING WEST OF THE PEACE RIVER
EXCEPT PLAN 21821

NOTES:

- CLEARING AND GRUBBING BETWEEN THE SOUTH EXISTING EDGE OF PAVEMENT AND THE EDGE OF WATER UNLESS OTHERWISE SHOWN. CLEARING AND GRUBBING ON ISLANDS TO BE COMPLETE FROM THE EDGE OF WATER TO A MAX ELEVATION OF 463.0m.
- EXTEND ALL EXISTING CULVERTS THROUGH PROPOSED EMBANKMENT.

LEGEND

- MAXIMUM NORMAL RESERVOIR LINE (MNRL) ———
- STABILITY IMPACT LINE (SIL) - - - - -
- EROSION IMPACT LINE (EIL) - - - - -
- FLOOD IMPACT LINE (FIL) - - - - -
- (MIL BASED ON PRELIMINARY 1:10 000 YR LANDSLIDE)

CLEARING AND GRUBBING
TOTAL THIS SHEET: 7.73 ha

DRAFT

PRELIMINARY DESIGN - JUNE 26, 2019

FOR PLANS
SEE DWG. R3-336-101 TO 112

FOR ARCHAEOLOGICAL PLANS
SEE DWG. R3-336-101ARC TO 112ARC

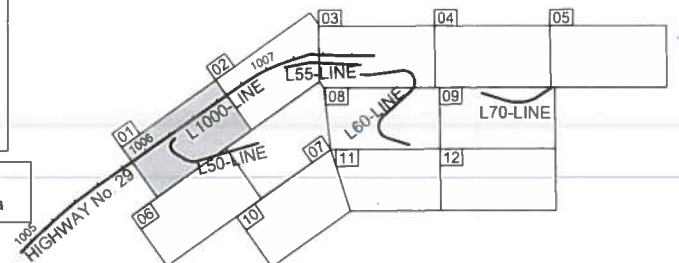
FOR ENVIRONMENTAL
FEATURE PLANS
SEE DWG. R3-336-101ENV TO 112ENV

FOR PROFILES
SEE DWG. R3-336-201 TO 206

FOR TYPICAL
SECTIONS AND DETAILS
SEE DWG. R3-336-301 TO 302

MATCH LINE SEE DWG. 19-0288-106

MATCH LINE SEE DWG. 19-0288-107



R. F. BINNIE & ASSOCIATES LTD.
300 - 4940 Canada Way,
Burnaby, BC V5G 4K6
TEL 604 420 3723
BINNIE.com



MINISTRY OF TRANSPORTATION
AND INFRASTRUCTURE
HIGHWAY ENGINEERING
NORTHERN REGION

SCALE 0 10 1 000 50m
CAD FILENAME 19-0288-1005_DWG
DATE 2019-06-26

PLANS AND DRAINAGE
HIGHWAY NO. 29
LYNX CREEK EAST EARLY WORKS

REV	DATE	REVISIONS	SIGNATURE

DESIGNED	Z. RICHETTI	DATE	JUNE 2019
QUALITY CONTROL	J. MANKOWSKI	DATE	JUNE 2019
QUALITY ASSURANCE	J. MORRIS	DATE	JUNE 2019
DRAWN	Z. RICHETTI	DATE	JUNE 2019
SENIOR DESIGNER		DATE	
FILE NUMBER	19-0288	PROJECT NUMBER	37504-0000
REG	3	DRAWING NUMBER	R3-336-101

BCH ID: 263
CROWN LAND
PIN: 8638261

R 1500.000 Lt
Δ 3°06'19"
Δc 3°06'19"
AD ???
Arc 81.294
Es 0.551

R 8000.000 Lt
Δ 0°31'06"
Δc 0°31'06"
AD ???
Arc 72.373
Es 0.082

BCH ID: 262
BCH LEASED
PID: 027-092-224

Reviewed / Examine

Page 6 of 14

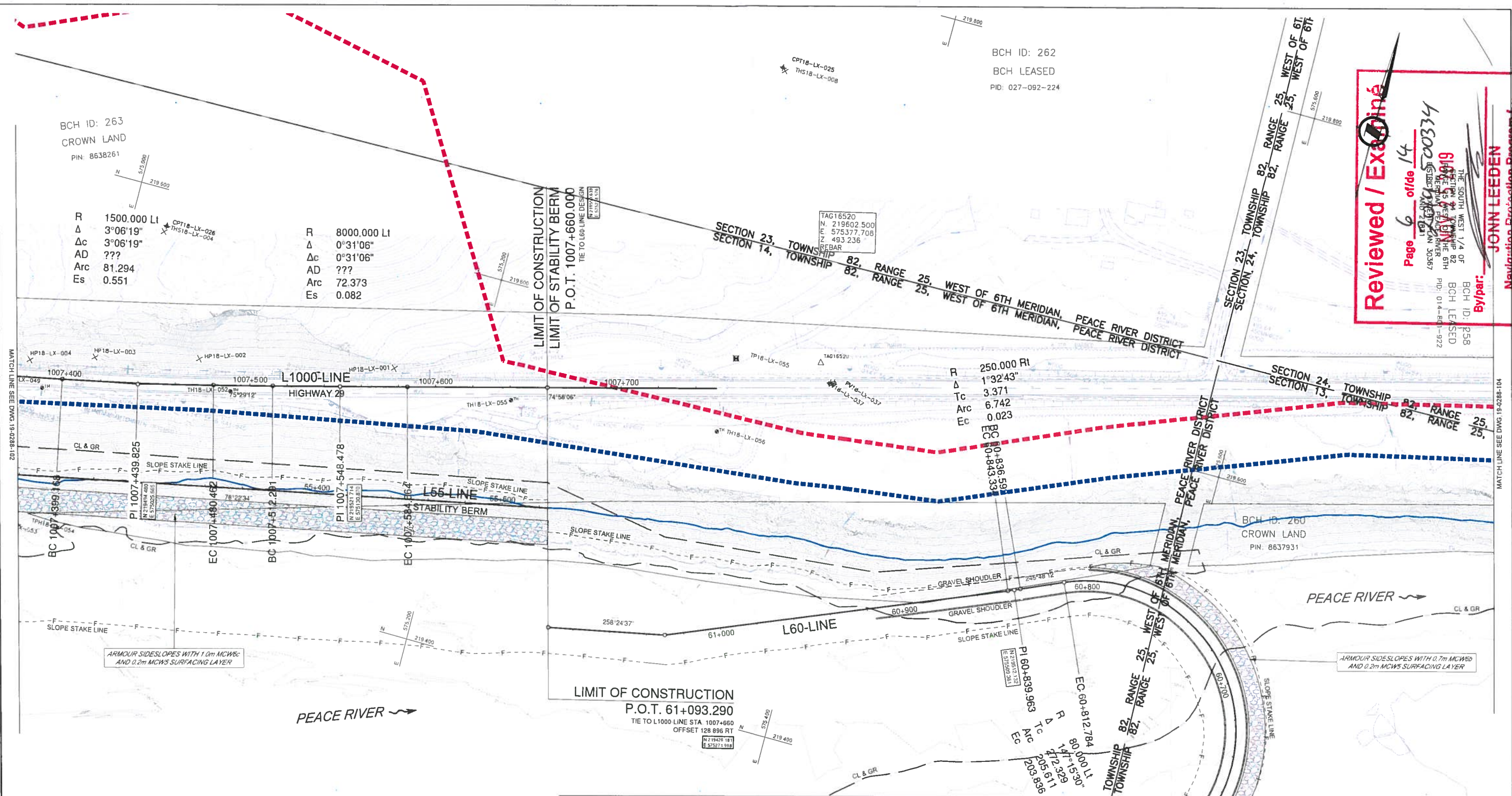
00334

6140

THE SOUTH WEST 1/4 OF SECTION 24, TOWNSHIP 82, RANGE 25, WEST OF 6TH MERIDIAN, PEACE RIVER DISTRICT

BC/Pair: JONN LEEDEN

Navigation Protection Program / Programme de protection de la navigation



- FOR PLANS SEE DWG. R3-336-101 TO 112
- FOR ARCHAEOLOGICAL PLANS SEE DWG. R3-336-101ARC TO 112ARC
- FOR ENVIRONMENTAL FEATURE PLANS SEE DWG. R3-336-101ENV TO 112ENV
- FOR PROFILES SEE DWG. R3-336-201 TO 206
- FOR TYPICAL SECTIONS AND DETAILS SEE DWG. R3-336-301 TO 302

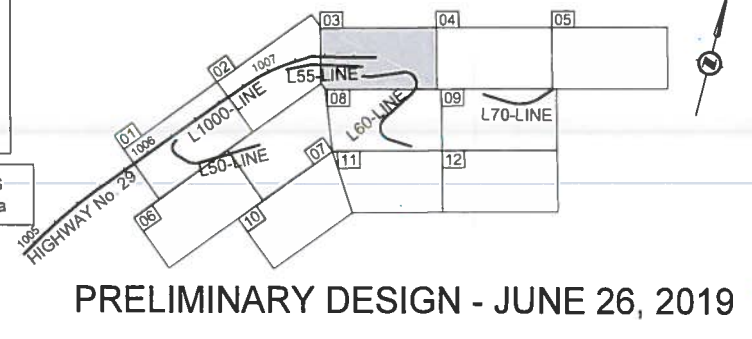
- NOTES:**
- CLEARING AND GRUBBING BETWEEN THE SOUTH EXISTING EDGE OF PAVEMENT AND THE EDGE OF WATER UNLESS OTHERWISE SHOWN. CLEARING AND GRUBBING ON ISLANDS TO BE COMPLETE FROM THE EDGE OF WATER TO A MAX ELEVATION OF 463.0m.
 - EXTEND ALL EXISTING CULVERTS THROUGH PROPOSED EMBANKMENT.

LEGEND

MAXIMUM NORMAL RESERVOIR LINE (MNRL)	—
STABILITY IMPACT LINE (SIL)	- - - -
EROSION IMPACT LINE (EIL)	- · - · -
FLOOD IMPACT LINE (FIL)	- · - · -
(WIL BASED ON PRELIMINARY 1:10 000 YR LANDSLIDE)	- · - · -

CLEARING AND GRUBBING TOTAL THIS SHEET: 3.82 ha

DRAFT



BINNIE
The people behind your infrastructure.

R.F. BINNIE & ASSOCIATES LTD.
300 - 4940 Canada Way,
Burnaby, BC V5G 4K6
TEL 604 420 1723
BINNIE.COM

SCALE 0 10 1,000 50m

CAD FILENAME: 19-0288-100PL-DWG
DATE: 2019-06-26

REV	DATE	REVISIONS	SIGNATURE

BRITISH COLUMBIA

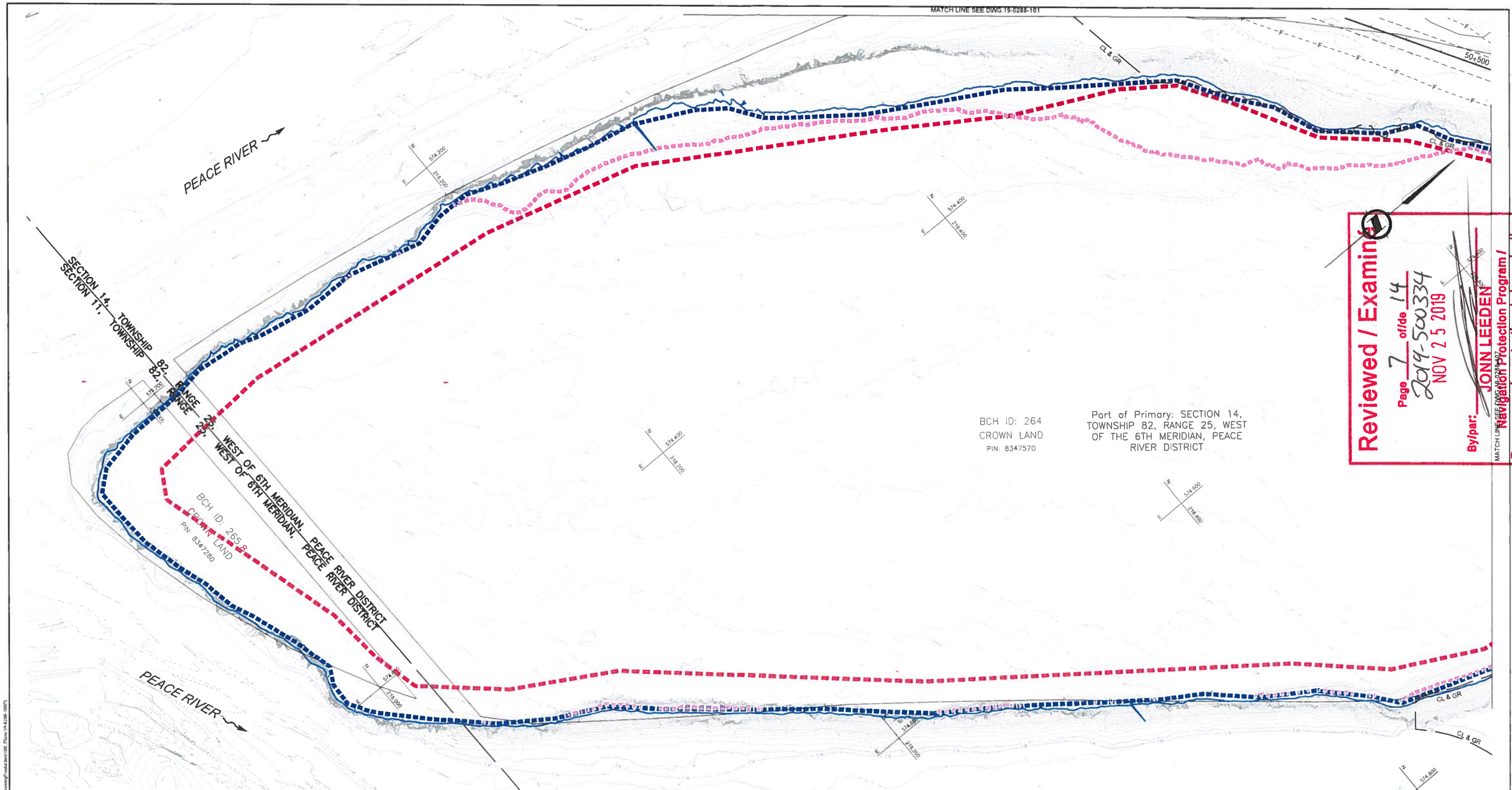
MINISTRY OF TRANSPORTATION AND INFRASTRUCTURE
HIGHWAY ENGINEERING
NORTHERN REGION

PLANS AND DRAINAGE
HIGHWAY NO. 29
LYNX CREEK EAST EARLY WORKS

DESIGNED: Z. RICHETTI	DATE: JUNE 2019
QUALITY CONTROL: B. MANKOWSKA	DATE: JUNE 2019
QUALITY ASSURANCE: J. NORRIS	DATE: JUNE 2019
DRAWN: Z. RICHETTI	DATE: JUNE 2019

FILE NUMBER	PROJECT NUMBER	REG	DRAWING NUMBER	REV
19-0288	37504-0000	3	R3-336-103	

Jun 26, 2019 10:49 AM C:\CAD\Projects\19-0288-100\19-0288-100-PLANS\19-0288-100-PLANS.dwg
 C:\Users\jbinnie\AppData\Local\Temp\19-0288-100-PLANS\19-0288-100-PLANS.dwg
 C:\Users\jbinnie\AppData\Local\Temp\19-0288-100-PLANS\19-0288-100-PLANS.dwg



Reviewed / Examined

Page 7 of 14
2019-500334
NOV 25 2019

By/par: **JOHN LEEDEN**
Navigation Protection Program /
Programme de protection de la navigation

BCH ID: 264
CROWN LAND
PIN: 8347570

Part of Primary: SECTION 14,
TOWNSHIP 82, RANGE 25, WEST
OF THE 6TH MERIDIAN, PEACE
RIVER DISTRICT

- FOR PLANS
SEE DWG. R3-336-101 TO 112
- FOR ARCHAEOLOGICAL PLANS
SEE DWG. R3-336-101ARC TO 112ARC
- FOR ENVIRONMENTAL
FEATURE PLANS
SEE DWG. R3-336-101ENV TO 112ENV
- FOR PROFILES
SEE DWG. R3-336-201 TO 206
- FOR TYPICAL
SECTIONS AND DETAILS
SEE DWG. R3-336-301 TO 302

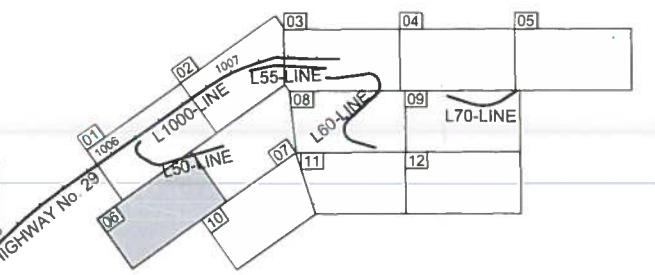
- NOTES:**
1. CLEARING AND GRUBBING BETWEEN THE SOUTH EXISTING EDGE OF PAVEMENT AND THE EDGE OF WATER UNLESS OTHERWISE SHOWN. CLEARING AND GRUBBING ON ISLANDS TO BE COMPLETE FROM THE EDGE OF WATER TO A MAX ELEVATION OF 463.0m.
 2. EXTEND ALL EXISTING CULVERTS THROUGH PROPOSED EMBANKMENT.

LEGEND

MAXIMUM NORMAL RESERVOIR LINE (MNRL)	
STABILITY IMPACT LINE (SIL)	
EROSION IMPACT LINE (EIL)	
FLOOD IMPACT LINE (FIL)	
(WIL BASED ON PRELIMINARY 1:10 000 YR LANDSLIDE)	

CLEARING AND GRUBBING
TOTAL THIS SHEET: 1.18 ha

DRAFT



PRELIMINARY DESIGN - JUNE 26, 2019

BINNIE
The people behind your infrastructure.

R.F. BINNIE & ASSOCIATES LTD.
300 - 4940 Canada Way,
Burnaby, BC V5G 4K6
TEL 604 420 3723
BINNIE.com

SCALE 0 10 1 000 50m

CAD FILENAME 19-0288-100PL DWG
DATE 2019-06-26

REV	DATE	REVISIONS	SIGNATURE

MATCH LINE SEE DWG 19-0288-110

BRITISH COLUMBIA
MINISTRY OF TRANSPORTATION
AND INFRASTRUCTURE
HIGHWAY ENGINEERING
NORTHERN REGION

PLANS AND DRAINAGE
HIGHWAY NO. 29
LYNX CREEK EAST EARLY WORKS

DESIGNED	Z. RICKETTS	DATE	JUNE 2019
QUALITY CONTROL	R. MARKOWSKIE	DATE	JUNE 2019
QUALITY ASSURANCE	J. NORRIS	DATE	JUNE 2019
DRAWN	Z. RICKETTS	DATE	JUNE 2019

FILE NUMBER	PROJECT NUMBER	REV	DRAWING NUMBER	REV
19-0288	37504-0000	3	R3-336-106	

2019-06-26 11:42 AM J:\CAD Projects\19-0288-100\19-0288-100-PL-DWG.dwg
 User: jnorris
 Plot: 19-0288-100-PL-DWG.dwg
 Plot Date: 2019-06-26 11:42 AM
 Plot Scale: 1:1
 Plot Orientation: Landscape
 Plot Range: Full
 Plot Style: Binnie.ctb
 Plot Color: Black
 Plot Lineweight: 0.5
 Plot Linetype: Solid
 Plot Font: Arial, 10
 Plot Title: 19-0288-100-PL-DWG.dwg
 Plot Sheet: 1 of 1
 Plot Path: J:\CAD Projects\19-0288-100\19-0288-100-PL-DWG.dwg



Reviewed / Examiné

Page 8 of 14
 2014-500334
 NOV 25 2019

By/par: **JOHN LEEDEN**
 Navigation Protection Program /
 Programme de protection de la navigation

- FOR PLANS
SEE DWG. R3-336-101 TO 112
- FOR ARCHAEOLOGICAL PLANS
SEE DWG. R3-336-101ARC TO 112ARC
- FOR ENVIRONMENTAL
FEATURE PLANS
SEE DWG. R3-336-101ENV TO 112ENV
- FOR PROFILES
SEE DWG. R3-336-201 TO 206
- FOR TYPICAL
SECTIONS AND DETAILS
SEE DWG. R3-336-301 TO 302

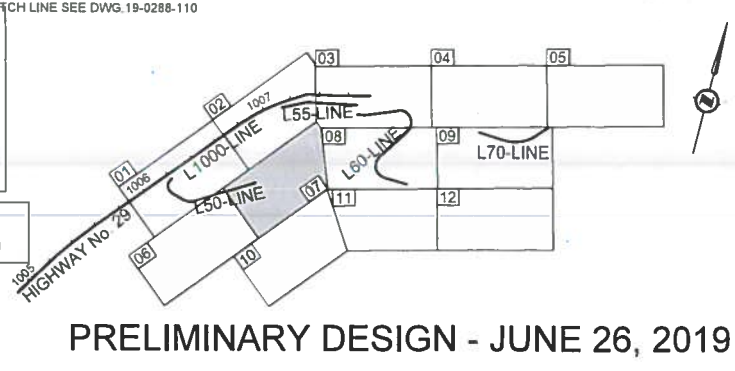
- NOTES:**
1. CLEARING AND GRUBBING BETWEEN THE SOUTH EXISTING EDGE OF PAVEMENT AND THE EDGE OF WATER UNLESS OTHERWISE SHOWN. CLEARING AND GRUBBING ON ISLANDS TO BE COMPLETE FROM THE EDGE OF WATER TO A MAX ELEVATION OF 463.0m.
 2. EXTEND ALL EXISTING CULVERTS THROUGH PROPOSED EMBANKMENT.

LEGEND

MAXIMUM NORMAL RESERVOIR LINE (MNRL)	—————
STABILITY IMPACT LINE (SIL)	-----
EROSION IMPACT LINE (EIL)	- - - - -
FLOOD IMPACT LINE (FIL)
(WIL BASED ON PRELIMINARY 1:10 000 YR LANDSLIDE)	

CLEARING AND GRUBBING
TOTAL THIS SHEET: 22.9 ha

DRAFT



BINNIE
The people behind your infrastructure.

R.F. BINNIE & ASSOCIATES LTD.
300 - 4940 Canada Way,
Burnaby, BC V5G 4K6
TEL 604 420 3723
BINNIE.com

BRITISH COLUMBIA MINISTRY OF TRANSPORTATION AND INFRASTRUCTURE
HIGHWAY ENGINEERING NORTHERN REGION

SCALE 0 10 1 1000 50m

CAD FILENAME 19-0288-100P.DWG
DATE 2019-06-28

REV	DATE	REVISIONS	SIGNATURE

PLANS AND DRAINAGE
HIGHWAY NO. 29
LYNX CREEK EAST EARLY WORKS

DESIGNED	Z. RICHETTI	DATE	JUNE 2019
QUALITY CONTROL	J. MANKOWSKI	DATE	JUNE 2019
QUALITY ASSURANCE	J. NORRIS	DATE	JUNE 2019
DRAWN	Z. RICHETTI	DATE	JUNE 2019

FILE NUMBER	PROJECT NUMBER	REG	DRAWING NUMBER	REV
19-0288	37504-0000	3	R3-336-107	

Jan 26, 2019 10:00 AM P:_CAD Projects\19-0288-100\19-0288-100.dwg CAD File Name: C:\Users\jrichetti\OneDrive\Documents\19-0288-100.dwg

MATCHLINE SEE DWG. 19-0288-103

PEACE RIVER

Reviewed / Examiné

Page 9 of 14
 2019-500334
 NOV 25 2019

By/par: **JOHN LEEDEN**
 Navigation Protection Program /
 Programme de protection de la navigation

BCH ID: 264
 CROWN LAND
 PIN: 8347570

Part of Primary: SECTION 14,
 TOWNSHIP 82, RANGE 25, WEST
 OF THE 6TH MERIDIAN, PEACE
 RIVER DISTRICT

PI 60+307.657
 H 219057 721
 E 375406 854

R 80 000 FT
 Δ 121°40'27"
 TC 143.361
 MC 169.889
 EC 84.172

LIMIT OF CONSTRUCTION
 P.O.T. 60+008.000
 EXTEND FOR ACCESS TO ISLAND GRAVEL PITS

BCH ID: 260.3
 CROWN LAND
 PIN: 8347440

Part of Primary: SECTION 13,
 TOWNSHIP 82, RANGE 25, WEST
 OF THE 6TH MERIDIAN, PEACE
 RIVER DISTRICT

- FOR PLANS SEE DWG. R3-336-101 TO 112
- FOR ARCHAEOLOGICAL PLANS SEE DWG. R3-336-101ARC TO 112ARC
- FOR ENVIRONMENTAL FEATURE PLANS SEE DWG. R3-336-101ENV TO 112ENV
- FOR PROFILES SEE DWG. R3-336-201 TO 206
- FOR TYPICAL SECTIONS AND DETAILS SEE DWG. R3-336-301 TO 302

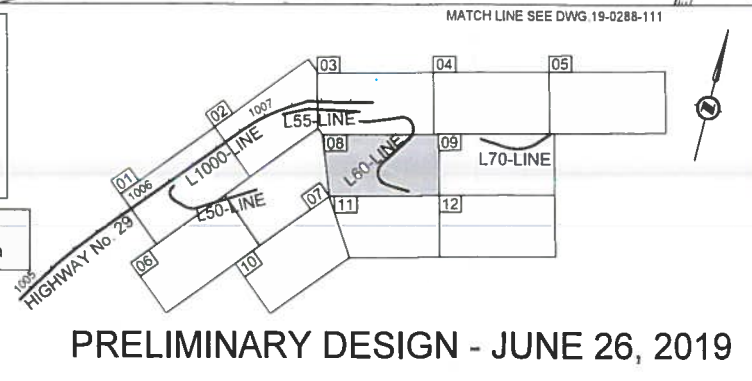
- NOTES:**
- CLEARING AND GRUBBING BETWEEN THE SOUTH EXISTING EDGE OF PAVEMENT AND THE EDGE OF WATER UNLESS OTHERWISE SHOWN. CLEARING AND GRUBBING ON ISLANDS TO BE COMPLETE FROM THE EDGE OF WATER TO A MAX ELEVATION OF 463.0m.
 - EXTEND ALL EXISTING CULVERTS THROUGH PROPOSED EMBANKMENT.

LEGEND

MAXIMUM NORMAL RESERVOIR LINE (MNRL)	—
STABILITY IMPACT LINE (SIL)	- - - -
EROSION IMPACT LINE (EIL)	- · - · -
FLOOD IMPACT LINE (FIL)	- · - · -
(WIL BASED ON PRELIMINARY 1:10 000 YR LANDSLIDE)	- · - · -

CLEARING AND GRUBBING
 TOTAL THIS SHEET: 26.5 ha

DRAFT



BINNIE
 The people behind your infrastructure.

R.F. BINNIE & ASSOCIATES LTD.
 300 4940 Canada Way,
 Burnaby, BC V5G 4K6
 TEL 604 420 1721
 BINNIE.com

SCALE 0 10 1 000 50m

CAD FILENAME: 19-0288-100PL.DWG
 DATE: 2019-06-28

REV	DATE	REVISIONS	SIGNATURE

BRITISH COLUMBIA
 MINISTRY OF TRANSPORTATION AND INFRASTRUCTURE
 HIGHWAY ENGINEERING
 NORTHERN REGION

PLANS AND DRAINAGE
 HIGHWAY NO. 29
 LYNX CREEK EAST EARLY WORKS

DESIGNED: Z. RICHTETS	DATE: JUNE 2019
QUALITY CONTROL: R. MANKOWSKA	DATE: JUNE 2019
QUALITY ASSURANCE: J. MORRIS	DATE: JUNE 2019
DRAWN: Z. RICHTETS	DATE: JUNE 2019

SENIOR DESIGNER	DATE
FILE NUMBER: 19-0288	PROJECT NUMBER: 37504-0000
REG: 3	DRAWING NUMBER: R3-336-108

Jun 26, 2019 - 10:52 AM P:_CAD_Projects\19-0288-100\19-0288-100_Plan_19-0288-108.dwg
 C:\Users\jmorris\AppData\Local\Temp\19-0288-100_Plan_19-0288-108.dwg

MATCHLINE SEE DWG. 19-0288-104

Part of Primary: SECTION 13,
TOWNSHIP 82, RANGE 25,
WEST OF THE 6TH MERIDIAN,
PEACE RIVER DISTRICT

BCH ID: 260.4
CROWN LAND
PIN: 8347440

BCH ID: 260
CROWN LAND
PIN: 8637931

R
Δ
Tc
Arc
Ec
250.000 R1
51°28'42"
120.527
224.616
27.537

BC 70+110.167

L70-LINE

PEACE RIVER

ARMOUR SIDESLOPES WITH 0.7m MCW5D
AND 0.2m MCW5 SURFACING LAYER

THAT PART OF THE NORTH EAST 1/4 OF
SECTION 13 TOWNSHIP 82 RANGE 25
WEST OF THE 6TH MERIDIAN PEACE RIVER
DISTRICT WHICH LIES TO THE NORTH OF
THE LEFT BANK OF THE PEACE RIVER
EXCEPT PLAN 21821

BCH ID: 259
BCH LEASED
PID: 014-900-831

BCH ID: 260.3
CROWN LAND
PIN: 8347440

Reviewed / Examiné
Page 10 office 14
2019-500334
NOV 25 2019
By/par: **JONN LEEDEN**
Navigation Protection Program /
Programme de protection de la navigation

MATCHLINE SEE DWG. 19-0288-108

MATCHLINE SEE DWG. 19-0288-112

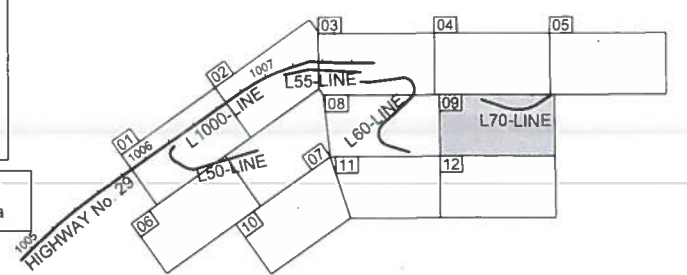
- FOR PLANS SEE DWG. R3-336-101 TO 112
- FOR ARCHAEOLOGICAL PLANS SEE DWG. R3-336-101ARC TO 112ARC
- FOR ENVIRONMENTAL FEATURE PLANS SEE DWG. R3-336-101ENV TO 112ENV
- FOR PROFILES SEE DWG. R3-336-201 TO 206
- FOR TYPICAL SECTIONS AND DETAILS SEE DWG. R3-336-301 TO 302

- NOTES:**
- CLEARING AND GRUBBING BETWEEN THE SOUTH EXISTING EDGE OF PAVEMENT AND THE EDGE OF WATER UNLESS OTHERWISE SHOWN. CLEARING AND GRUBBING ON ISLANDS TO BE COMPLETE FROM THE EDGE OF WATER TO A MAX ELEVATION OF 463.0m.
 - EXTEND ALL EXISTING CULVERTS THROUGH PROPOSED EMBANKMENT.

LEGEND

MAXIMUM NORMAL RESERVOIR LINE (MNRL)	—
STABILITY IMPACT LINE (SIL)	- - -
EROSION IMPACT LINE (EIL)	- · - · -
FLOOD IMPACT LINE (FIL)	- · - · -
(WIL BASED ON PRELIMINARY 1:10 000 YR LANDSLIDE)	- · - · -

CLEARING AND GRUBBING
TOTAL THIS SHEET: 13.1 ha
DRAFT



PRELIMINARY DESIGN - JUNE 26, 2019

BINNIE
The people behind your infrastructure.

R.F. BINNIE & ASSOCIATES LTD.
300 - 4940 Canada Way,
Burnaby, BC V5G 4K6
TEL 604 430 1721
BINNIE.com

BRITISH COLUMBIA
MINISTRY OF TRANSPORTATION
AND INFRASTRUCTURE
HIGHWAY ENGINEERING
NORTHERN REGION

SCALE 0 10 1 000 50m

CAD FILENAME 19-0288-109PL.DWG
DATE 2019-06-21

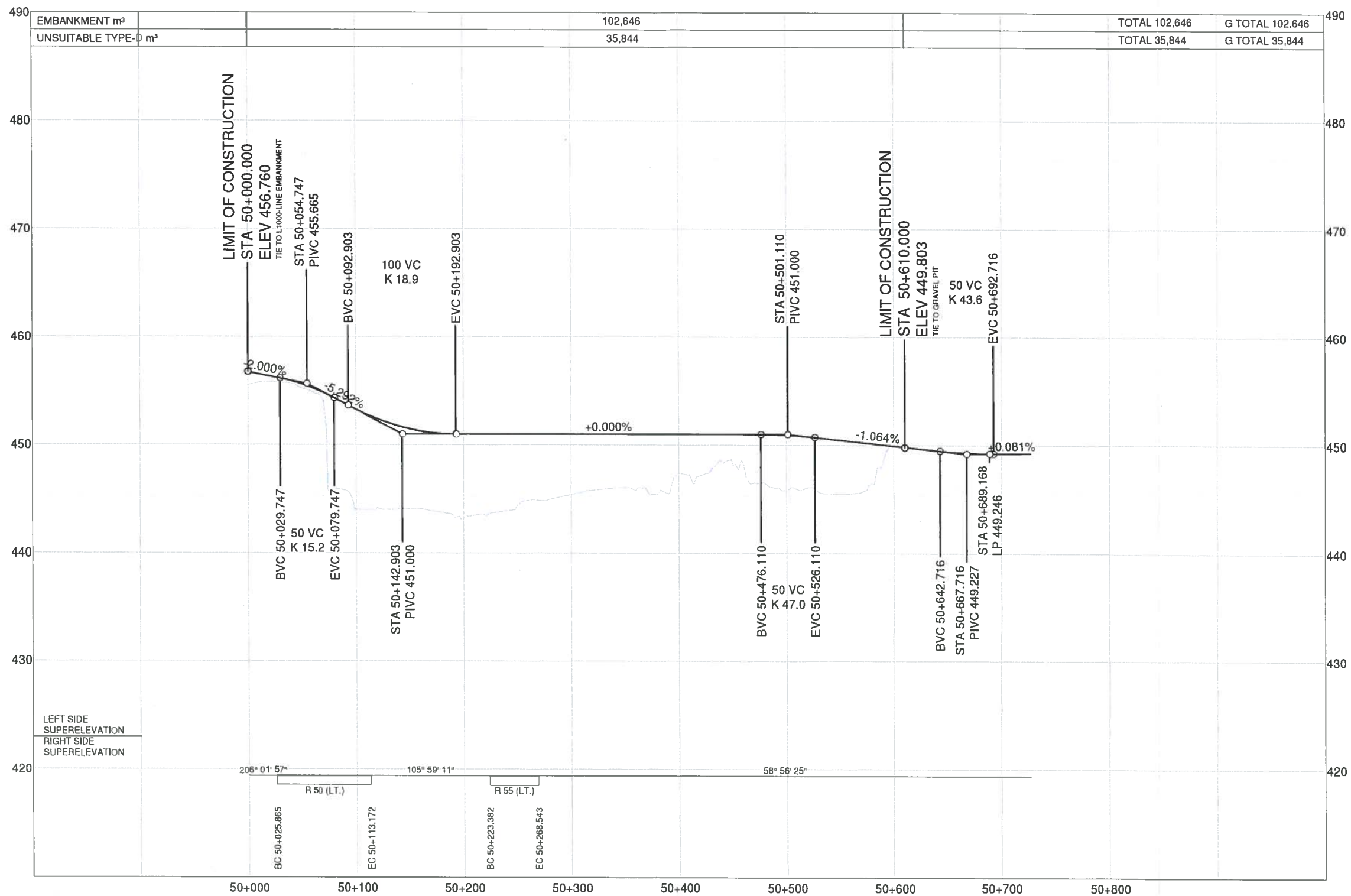
REV	DATE	REVISIONS	SIGNATURE

PLANS AND DRAINAGE
HIGHWAY NO. 29
LYNX CREEK EAST EARLY WORKS

DESIGNED	Z. RICKETTS	DATE	JUNE 2019
QUALITY CONTROL	R. MANKOWSKA	DATE	JUNE 2019
QUALITY ASSURANCE	J. MORRIS	DATE	JUNE 2019
DRAWN	Z. RICKETTS	DATE	JUNE 2019

FILE NUMBER	19-0288	PROJECT NUMBER	37504-0000	REG	3	DRAWING NUMBER	R3-336-109
-------------	---------	----------------	------------	-----	---	----------------	------------

Jun-26-2019 10:29:44 AM P:\CAD Projects\19-0288-109\19-0288-109.dwg C:\Users\jleeden\OneDrive\Documents\19-0288-109.dwg



EMBANKMENT m³	102,646	TOTAL 102,646	G TOTAL 102,646
UNSUITABLE TYPE-D m³	35,844	TOTAL 35,844	G TOTAL 35,844

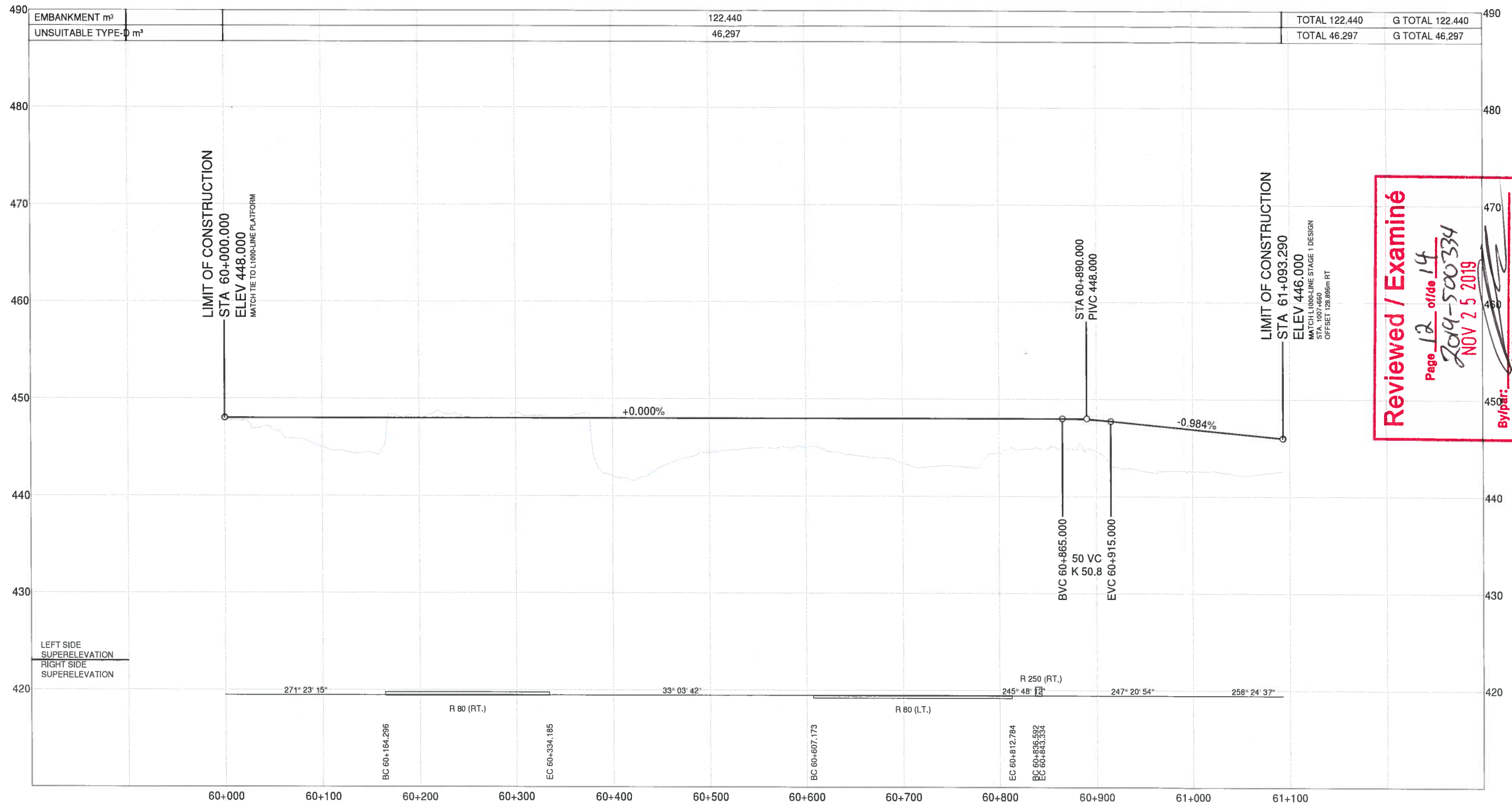
Reviewed / Examiné
 Page 11 of 14
 2019-500334
 NOV 25 2019
 By/par: **JOHN LEEDEN**
 Navigation Protection Program /
 Programme de protection de la navigation

- FOR PLANS
SEE DWG. R3-336-101 TO 112
- FOR ARCHAEOLOGICAL PLANS
SEE DWG. R3-336-101ARC TO 112ARC
- FOR ENVIRONMENTAL
FEATURE PLANS
SEE DWG. R3-336-101ENV TO 112ENV
- FOR PROFILES
SEE DWG. R3-336-201 TO 206
- FOR TYPICAL
SECTIONS AND DETAILS
SEE DWG. R3-336-301 TO 302

DRAFT

L50-LINE (CAUSEWAY) - DESIGN SPEED 40km/h
 FUNCTIONAL DESIGN - JULY 4, 2019

<p>BINNIE The people behind your infrastructure.</p>	<p>R.F. BINNIE & ASSOCIATES LTD. 101 - 3377 7th Avenue, Prince George, BC V2L 3P5 TEL 250 563 7274 BINNIE.COM</p>	<p>MINISTRY OF TRANSPORTATION AND INFRASTRUCTURE HIGHWAY ENGINEERING NORTHERN REGION</p>																																							
	<p>SCALE: 0 20 100m H 1 2000 100m 0 2 10m V 1 200 10m</p> <p>CAD FILENAME: 190288-2002R.DWG DATE: 2019-07-02</p>	<p>L50-LINE PROFILE HIGHWAY NO. 29 LYNX CREEK EAST EARLY WORKS</p>																																							
<table border="1"> <thead> <tr> <th>REV</th> <th>DATE</th> <th>REVISIONS</th> <th>SIGNATURE</th> </tr> </thead> <tbody> <tr><td> </td><td> </td><td> </td><td> </td></tr> <tr><td> </td><td> </td><td> </td><td> </td></tr> <tr><td> </td><td> </td><td> </td><td> </td></tr> <tr><td> </td><td> </td><td> </td><td> </td></tr> <tr><td> </td><td> </td><td> </td><td> </td></tr> <tr><td> </td><td> </td><td> </td><td> </td></tr> <tr><td> </td><td> </td><td> </td><td> </td></tr> <tr><td> </td><td> </td><td> </td><td> </td></tr> <tr><td> </td><td> </td><td> </td><td> </td></tr> </tbody> </table>	REV	DATE	REVISIONS	SIGNATURE																																					<p>DESIGNED: Z. BICKETT DATE: JULY 2019 QUALITY CONTROL: B. MANKOWSKI DATE: JULY 2019 QUALITY ASSURANCE: J. MORRIS DATE: JULY 2019 SENIOR DESIGNER: _____ DATE: _____ DRAWN: Z. BICKETT DATE: JULY 2019</p>
REV	DATE	REVISIONS	SIGNATURE																																						
<table border="1"> <tr> <th>FILE NUMBER</th> <th>PROJECT NUMBER</th> <th>REG</th> <th>DRAWING NUMBER</th> <th>REV</th> </tr> <tr> <td>19-0288</td> <td>37504-0000</td> <td>3</td> <td>R3-346-203</td> <td> </td> </tr> </table>	FILE NUMBER	PROJECT NUMBER	REG	DRAWING NUMBER	REV	19-0288	37504-0000	3	R3-346-203																																
FILE NUMBER	PROJECT NUMBER	REG	DRAWING NUMBER	REV																																					
19-0288	37504-0000	3	R3-346-203																																						



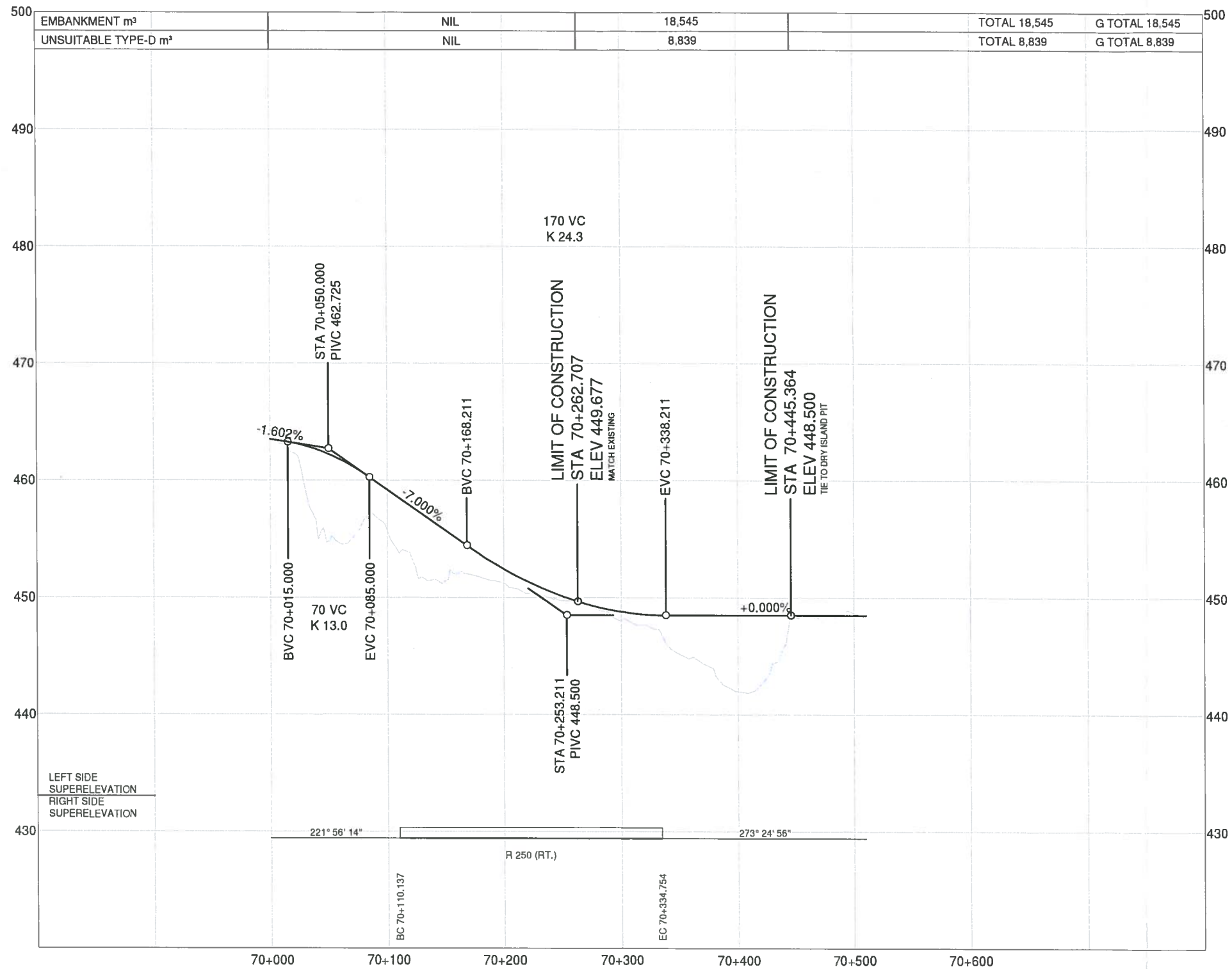
Reviewed / Examiné
 Page 12 of 14
 2019-500334
 NOV 5 2019
 By/par: **JONN LEEDEN**
 Navigation Protection Program /
 Programme de protection de la navigation

- FOR PLANS
SEE DWG. R3-336-101 TO 112
- FOR ARCHAEOLOGICAL PLANS
SEE DWG. R3-336-101ARC TO 112ARC
- FOR ENVIRONMENTAL
FEATURE PLANS
SEE DWG. R3-336-101ENV TO 112ENV
- FOR PROFILES
SEE DWG. R3-336-201 TO 206
- FOR TYPICAL
SECTIONS AND DETAILS
SEE DWG. R3-336-301 TO 302

DRAFT

L60-LINE (HAUL ROAD) - DESIGN SPEED 40 km/h
 FUNCTIONAL DESIGN - JULY 4, 2019

<p>BINNIE The people behind your infrastructure.</p>	<p>R.F. BINNIE & ASSOCIATES LTD. 101 - 1577 7th Avenue, Prince George, BC V2L 3P5 TEL 250 563 7274 BINNIE.COM</p>	<p>MINISTRY OF TRANSPORTATION AND INFRASTRUCTURE HIGHWAY ENGINEERING NORTHERN REGION</p>
<p>SCALE: 0 20 100m H 1:2000 V 1:200 0 2 10m</p>		<p>DESIGNED: Z. RICKETTS DATE: JULY 2019 QUALITY CONTROL: J. MANKOWSKIE DATE: JULY 2019 QUALITY ASSURANCE: J. NOBLE DATE: JULY 2019 DRAWN: Z. RICKETTS DATE: JULY 2019</p>
<p>REV DATE REVISIONS SIGNATURE</p>		<p>FILE NUMBER: 19-0288 PROJECT NUMBER: 37504-0000 REG: 3 DRAWING NUMBER: R3-346-205 REV:</p>

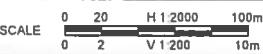


Reviewed / Examiné
 Page 13 of 14
 2019-500334
 NOV 25 2019
 By/par: **JONN LEEDEN**
 Navigation Protection Program /
 Programme de protection de la navigation

- FOR PLANS
SEE DWG. R3-336-101 TO 112
- FOR ARCHAEOLOGICAL PLANS
SEE DWG. R3-336-101ARC TO 112ARC
- FOR ENVIRONMENTAL
FEATURE PLANS
SEE DWG. R3-336-101ENV TO 112ENV
- FOR PROFILES
SEE DWG. R3-336-201 TO 205
- FOR TYPICAL
SECTIONS AND DETAILS
SEE DWG. R3-336-301 TO 302

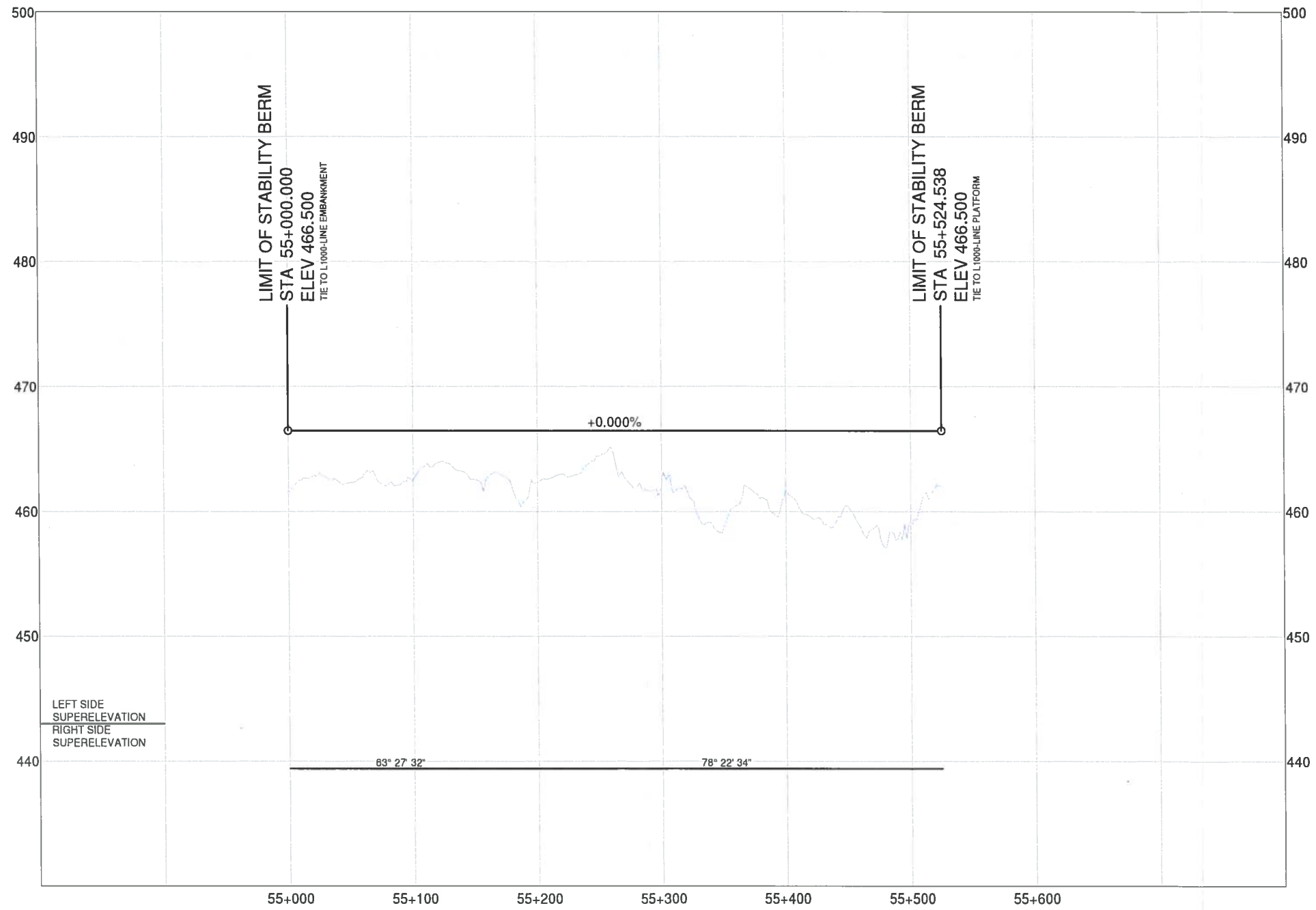
DRAFT

L70-LINE (ISLAND ACCESS) - DESIGN SPEED 40 km/h
 FUNCTIONAL DESIGN - JULY 4, 2019

 The people behind your infrastructure.	R.F. BINNIE & ASSOCIATES LTD. 101 - 1577 7th Avenue, Prince George, BC V2L 3P5 TEL 250 562 7274 BINNIE.com	 BRITISH COLUMBIA	MINISTRY OF TRANSPORTATION AND INFRASTRUCTURE HIGHWAY ENGINEERING NORTHERN REGION
SCALE 		L70-LINE PROFILE HIGHWAY NO. 29 LYNX CREEK EAST EARLY WORKS	
CAD FILENAME: 190288-100PR.DWG DATE: 2019-07-02		DESIGNED: Z. RICKETTS DATE: JULY 2019 QUALITY CONTROL: J. MANIKOWSKA DATE: JULY 2019 QUALITY ASSURANCE: J. MORRIS DATE: JULY 2019 DRAWN: Z. RICKETTS DATE: JULY 2019	
REV DATE REVISIONS SIGNATURE		SENIOR DESIGNER: _____ DATE: _____	
FILE NUMBER	PROJECT NUMBER	REG	DRAWING NUMBER
19-0288	37504-0000	3	R3-346-206

J:\2_2019_01_09\019_P_CAD_Drawing\T020119-0288000_CAD\Profile\mxd\mxd.dwg - C:\Users\jmanikowsk\Documents\190288-100PR

ALIGNMENT USED FOR L1000-LINE OFFSET GEOMETRY ONLY
SEE L1000-LINE PROFILE FOR EMBANKMENT QUANTITIES



Reviewed / Examiné
 Page 14 of 14
 2019-500334
 NOV 25 2019
 By/par: **JONN LEEDEN**
 Navigation Protection Program /
 Programme de protection de la navigation

- FOR PLANS
SEE DWG. R3-336-101 TO 112
- FOR ARCHAEOLOGICAL PLANS
SEE DWG. R3-336-101ARC TO 112ARC
- FOR ENVIRONMENTAL
FEATURE PLANS
SEE DWG. R3-336-101ENV TO 112ENV
- FOR PROFILES
SEE DWG. R3-336-201 TO 206
- FOR TYPICAL
SECTIONS AND DETAILS
SEE DWG. R3-336-301 TO 302

DRAFT

L55-LINE (STABILITY BERM)

FUNCTIONAL DESIGN - JULY 4, 2019

 The people behind your Infrastructure.	R.F. BINNIE & ASSOCIATES LTD. 101 - 1577 7th Avenue, Prince George, BC V2L 3P5 TEL 250 561 7274 BINNIE.com	 BRITISH COLUMBIA MINISTRY OF TRANSPORTATION AND INFRASTRUCTURE HIGHWAY ENGINEERING NORTHERN REGION																																			
	SCALE: 0 20 100m H 1:2000 0 2 10m V 1:200 CAD FILENAME: 190288-200PR.DWG DATE: 2019-07-02	L55-LINE PROFILE HIGHWAY NO. 29 LYNX CREEK EAST EARLY WORKS																																			
<table border="1" style="width: 100%; border-collapse: collapse;"> <thead> <tr> <th>REV</th> <th>DATE</th> <th>REVISIONS</th> <th>SIGNATURE</th> </tr> </thead> <tbody> <tr><td> </td><td> </td><td> </td><td> </td></tr> <tr><td> </td><td> </td><td> </td><td> </td></tr> <tr><td> </td><td> </td><td> </td><td> </td></tr> <tr><td> </td><td> </td><td> </td><td> </td></tr> <tr><td> </td><td> </td><td> </td><td> </td></tr> <tr><td> </td><td> </td><td> </td><td> </td></tr> <tr><td> </td><td> </td><td> </td><td> </td></tr> <tr><td> </td><td> </td><td> </td><td> </td></tr> </tbody> </table>	REV	DATE	REVISIONS	SIGNATURE																																	DESIGNED: Z. RICHETTI DATE: JULY 2019 QUALITY CONTROL: B. MANKOWSKI DATE: JULY 2019 QUALITY ASSURANCE: J. MORRIS DATE: JULY 2019 DRAWN: Z. RICHETTI DATE: JULY 2019
REV	DATE	REVISIONS	SIGNATURE																																		
SENIOR DESIGNER: _____ DATE: _____	<table border="1" style="width: 100%; border-collapse: collapse;"> <tr> <td>FILE NUMBER</td> <td>PROJECT NUMBER</td> <td>REG</td> <td>DRAWING NUMBER</td> <td>REV</td> </tr> <tr> <td>19-0288</td> <td>37504-0000</td> <td>3</td> <td>R3-346-204</td> <td> </td> </tr> </table>	FILE NUMBER	PROJECT NUMBER	REG	DRAWING NUMBER	REV	19-0288	37504-0000	3	R3-346-204																											
FILE NUMBER	PROJECT NUMBER	REG	DRAWING NUMBER	REV																																	
19-0288	37504-0000	3	R3-346-204																																		