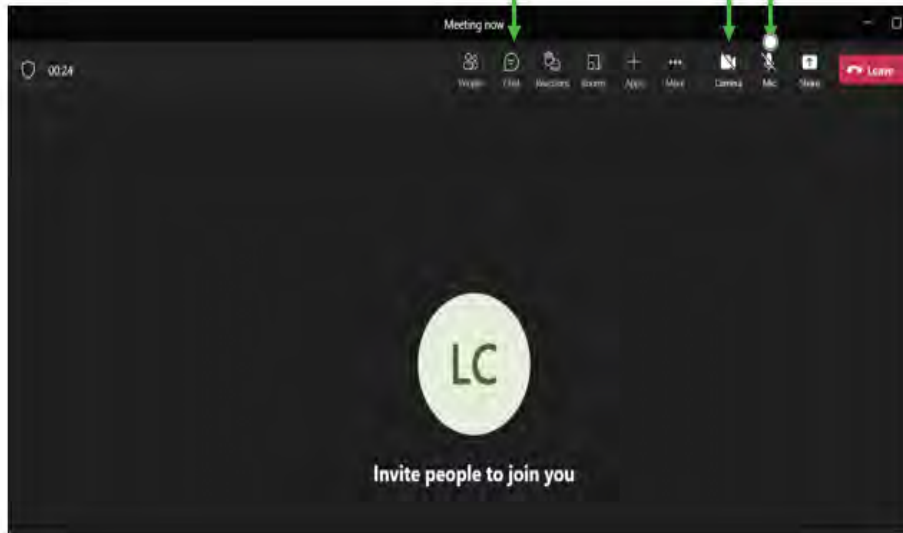


Microsoft Teams Reminders

We'll be using a few basic tools, which you can find on your screen

open chat box for
q's & feedback

turn video on/off &
mute/unmute mic



**Site C Clean Energy Project
Regional Community Liaison Committee**

Wednesday, November 27, 2024

1:30 – 3:00 pm PST
2:30 – 4:00 pm MST

Via MS Teams Videoconference

[Click here to join the meeting](#)

Or connect by phone (audio only) at: [+1 604-343-0415](tel:+16043430415), [415145741#](tel:+16043430415) Canada, Vancouver
Phone Conference ID: 415 145 741#

AGENDA

Opening, Welcome and Acknowledgement (Bob Gammer)	1:30 PM
Review of Agenda and Action Items (Bob Gammer)	1:35 PM
Dam On-site Construction Update (Chris Waite) <ul style="list-style-type: none">o Generating Station Updateo Other project areas	1:40 PM
Reservoir (Dave Hunter) <ul style="list-style-type: none">o Spillway operationso Ongoing monitoringo Boat Launches	1:50 PM
Environmental Update (Matt Barnette) <ul style="list-style-type: none">o Site Reclamation	2:00 PM
Jobs and Businesses Update (Kate O'Neil)	2:10 PM
Roundtable (Committee members)	2:15 PM
Completion of Committee's Task/Closing (Bob Gammer) <ul style="list-style-type: none">o Ongoing communication	2:25 PM

Action Log

There are no action items

Site C Project Update

Chris Waite



Dam Site Construction Update

➤ Generating Station

- Transformers
- Transmission
- Powerhouse

➤ Damsite

- Tunnels
- General Site

Spillways and Powerhouse



Transformers Connected



Transformers Connected



Transmission Completed



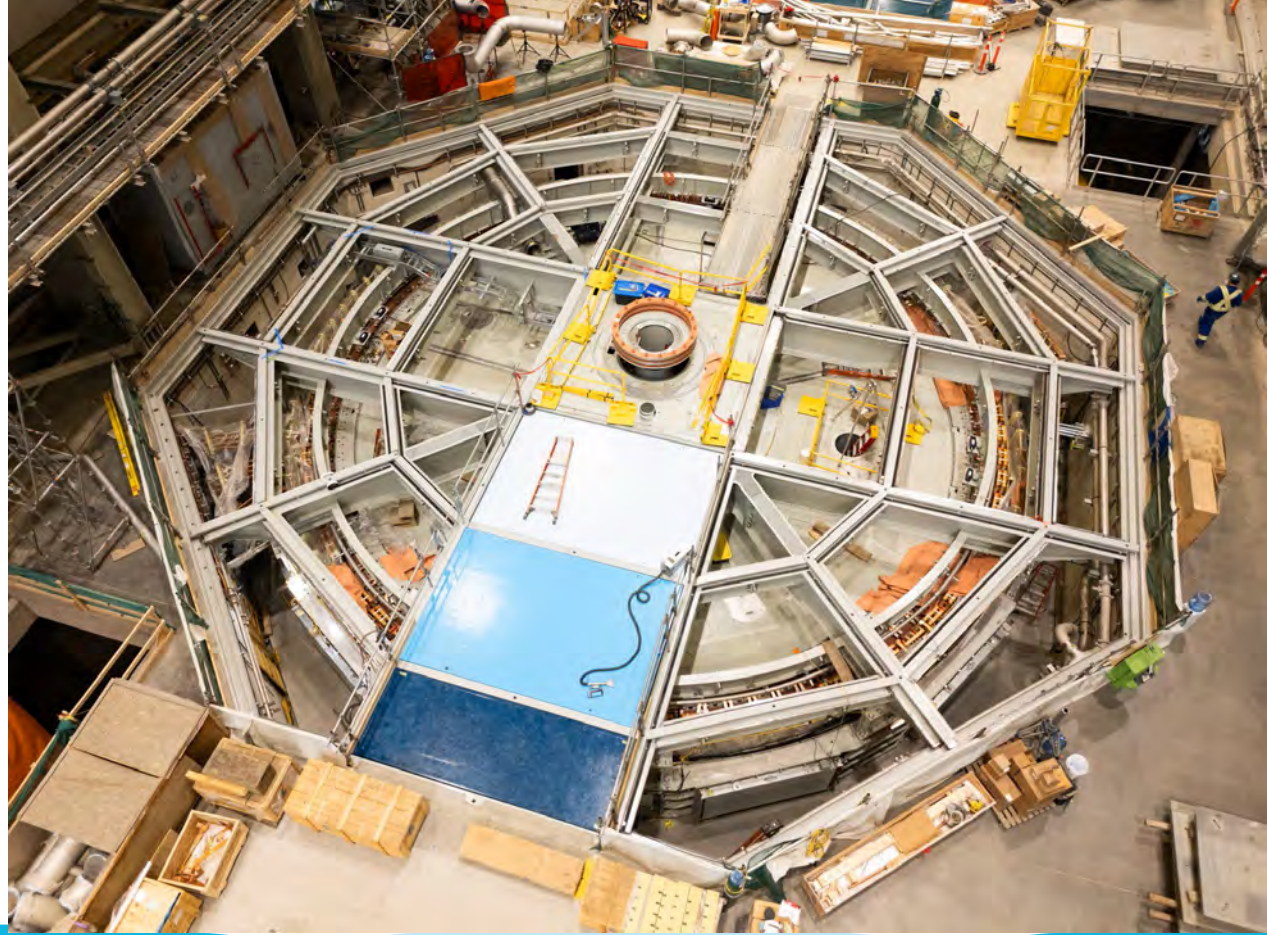
Units 1 through 6



Units 6 through 1



Unit 5



Unit 6



Unit 6 Rotor Assembly



Diversion Tunnel Coffer Dam



Questions?



Reservoir Filling

Dave Hunter

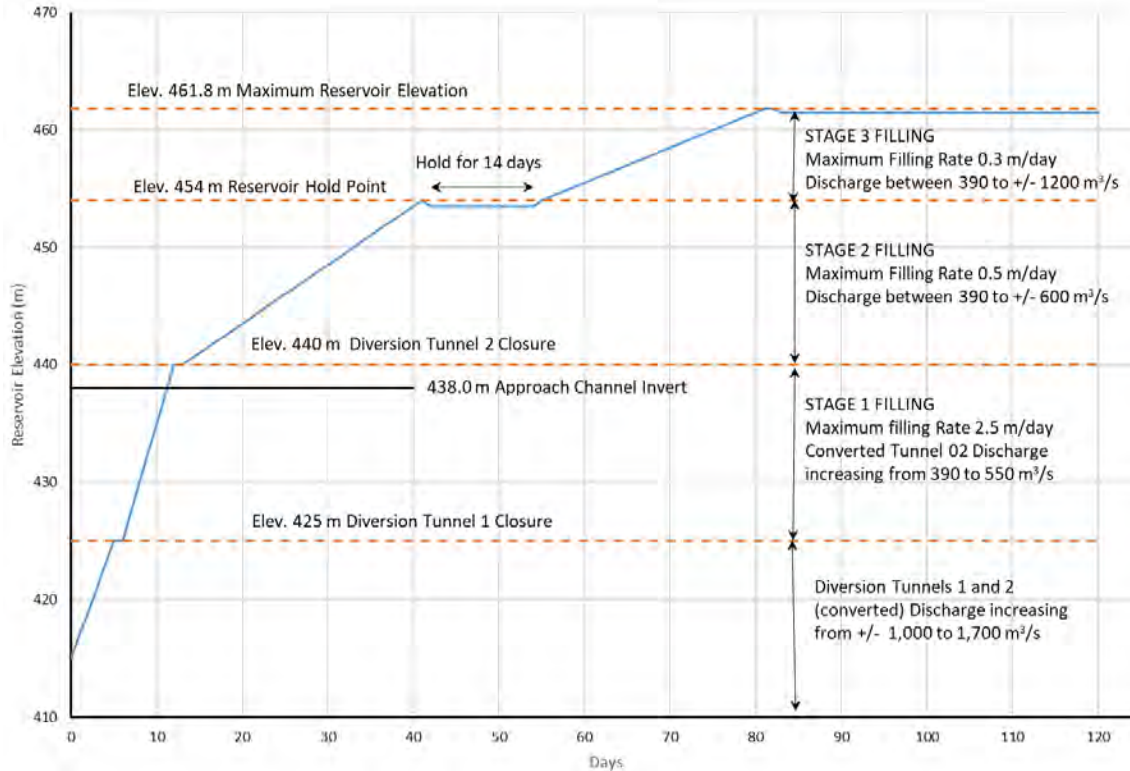


Site C Reservoir Filling - Status

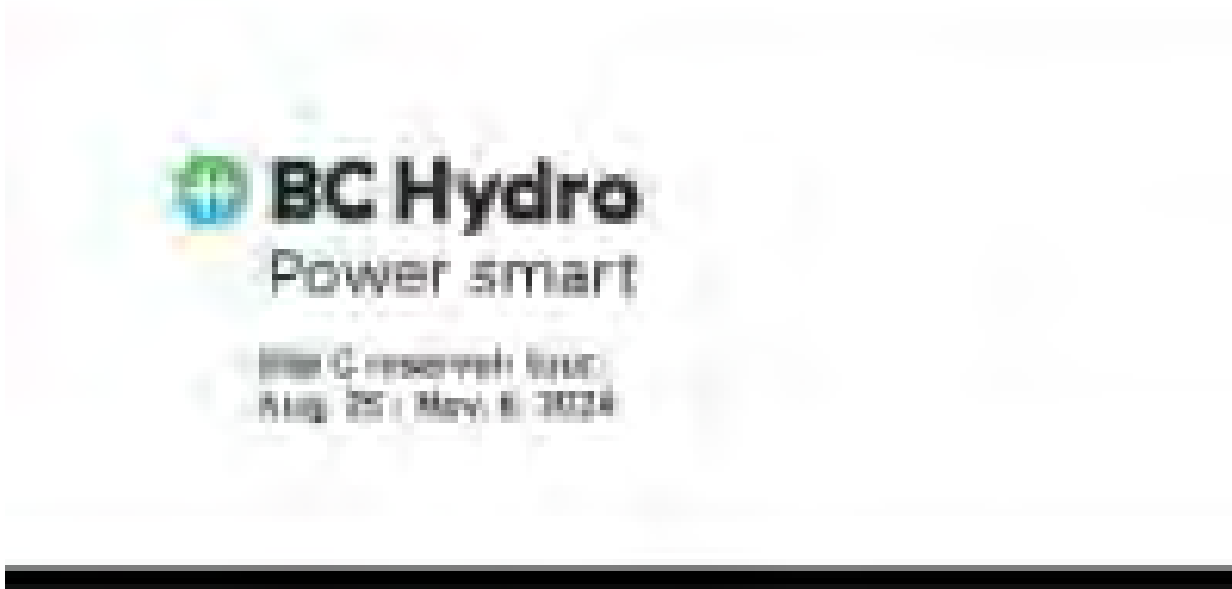
- Site C reservoir is 9,330 ha, 5% the size of Williston Reservoir, and 83 km long.
- Reservoir filling is now complete after 11 weeks, water at the Site C dam has risen **approximately 43 m** since the start of reservoir filling on August 25th.
- The water level at the dam site has reached the upper range within the 460 m to 461.8 m normal operating zone.
- Dam site monitoring program continues to show key project structures, including the earthfill dam and approach channel, are performing as expected.
- Environmental monitoring, including wildlife and fish, will continue over the operating life of Site C.
- Regular updates, including videos and photos, can also be found on sitecproject.com/reservoir.



Site C Reservoir Filling Schedule



BC Hydro Drone Video – November 6th



[BC Hydro Site C reservoir tour: Aug. 25 - Nov. 6, 2024](#)

Site C In Service Schedule

- Unit 1 came into service on October 28 providing electricity to the electrical grid
- On track to have all six generating units in service by fall 2025.



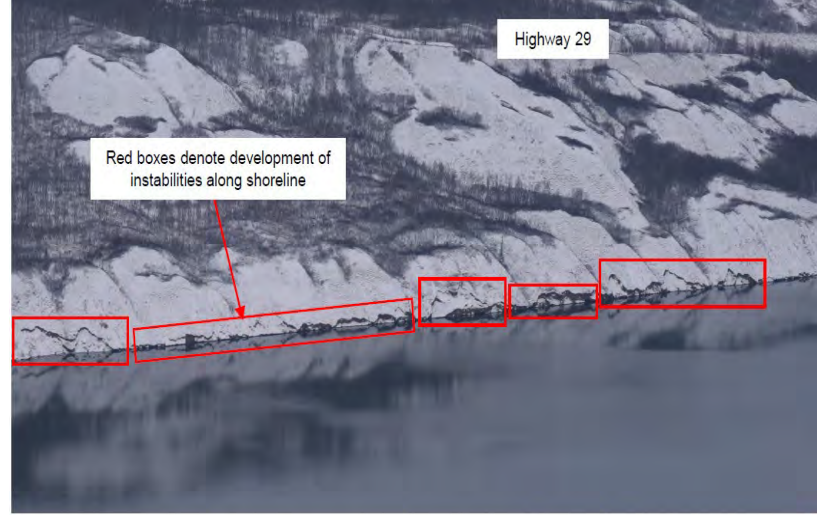
Site C Reservoir – Debris Management

- Reservoir woody debris captured by the dam site debris booms and removed by our contractors.
- Re-start of reservoir debris removal in spring 2025.
- Potential uses of debris stockpiled on dam site under consideration including remaining dam site reclamation activities, burning, mulching, or hauling offsite for use by others.



Slope Stability and Erosion Monitoring

- Reservoir area slope stability and shoreline erosion is being monitored, some sloughing and slumping has been observed within the range of expectations.
- Minor shoreline sloughing observed at several reservoir locations including the Moberly River confluence, Halfway River confluence and Farrell Creek areas.
- The reservoir slope and shoreline erosion monitoring instruments are located throughout the reservoir area including Cache Creek, Halfway and Moberly rivers.



Above – November 14, 2024 helicopter photo showing development of instabilities along the shoreline downslope of Highway 29, downstream of Halfway River. Instabilities extend several metres above the reservoir level. Similar features have been observed at numerous areas along the reservoir shoreline.



Site C Cultural Monitoring & Wildlife Observations

- Site C Cultural Monitoring Program underway during reservoir filling to support wildlife monitoring, including aerial and ground surveys, reservoir area during filling.
- No reported incidents of any wildlife in distress.
- Wildlife observations included:
 - Mule Deer, Elk, Beaver, and Black Bear around reservoir shoreline
 - Swans, Canada Geese, Eagles and Ducks within the reservoir area.
- Cultural Monitors provided personal feedback and images in daily reports

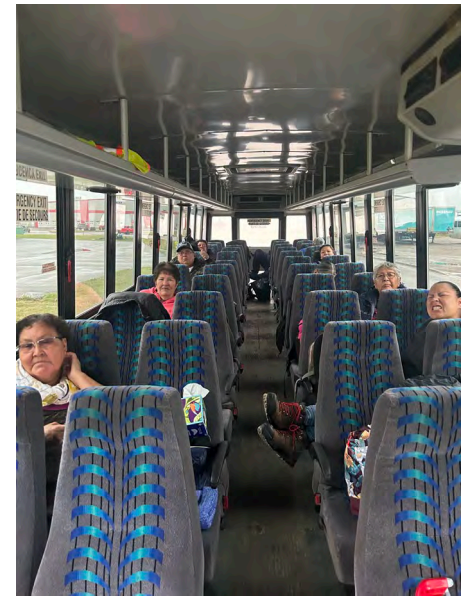


Site C Cultural Monitoring



Daily Report Form Site C Cultural Project - Cultural Monitoring

Project Information			
Cultural Monitor Name:	John W. K. L. A. A.	Date (YYYY-MM-DD):	2024 10 15
First Nation:	Naik'ene First Nation	Crew Lead:	Dylan D
Reservoir level/elevation:	454 meters		
Environmental Conditions			
Start Time:	7:00 am	Minimum Air Temp (°C):	2 degrees
End Time:	3:00 pm	Maximum Air Temp (°C):	14 degrees
Cloud Cover (%):	0% clouds	Wind (Beaufort scale):	8 km SW
Precipitation:	<input checked="" type="checkbox"/> None <input type="checkbox"/> Moderate <input type="checkbox"/> Light <input type="checkbox"/> Heavy		
Monitoring Location			
	Zone	Easting	Northing
UTM:	10N	562968	6905171
Location Description:	Peace Canyon Dam		
	Site Sketch		

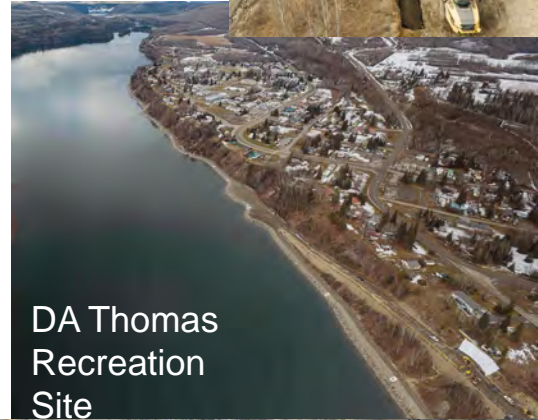


Cultural & Emotional Sentiment		
Location (UTM)	Description	Photo Sent to Crew Lead?
		<input type="checkbox"/> YES
		<input type="checkbox"/> YES
		<input type="checkbox"/> YES

Concerns: my concern is about my cultural is changing I don't go camping anymore or hunting because there's too many oil rigs where we used to camp and cutting down trees right now there's lots of logs in the river flooding not nice for the animals. That's my concern.

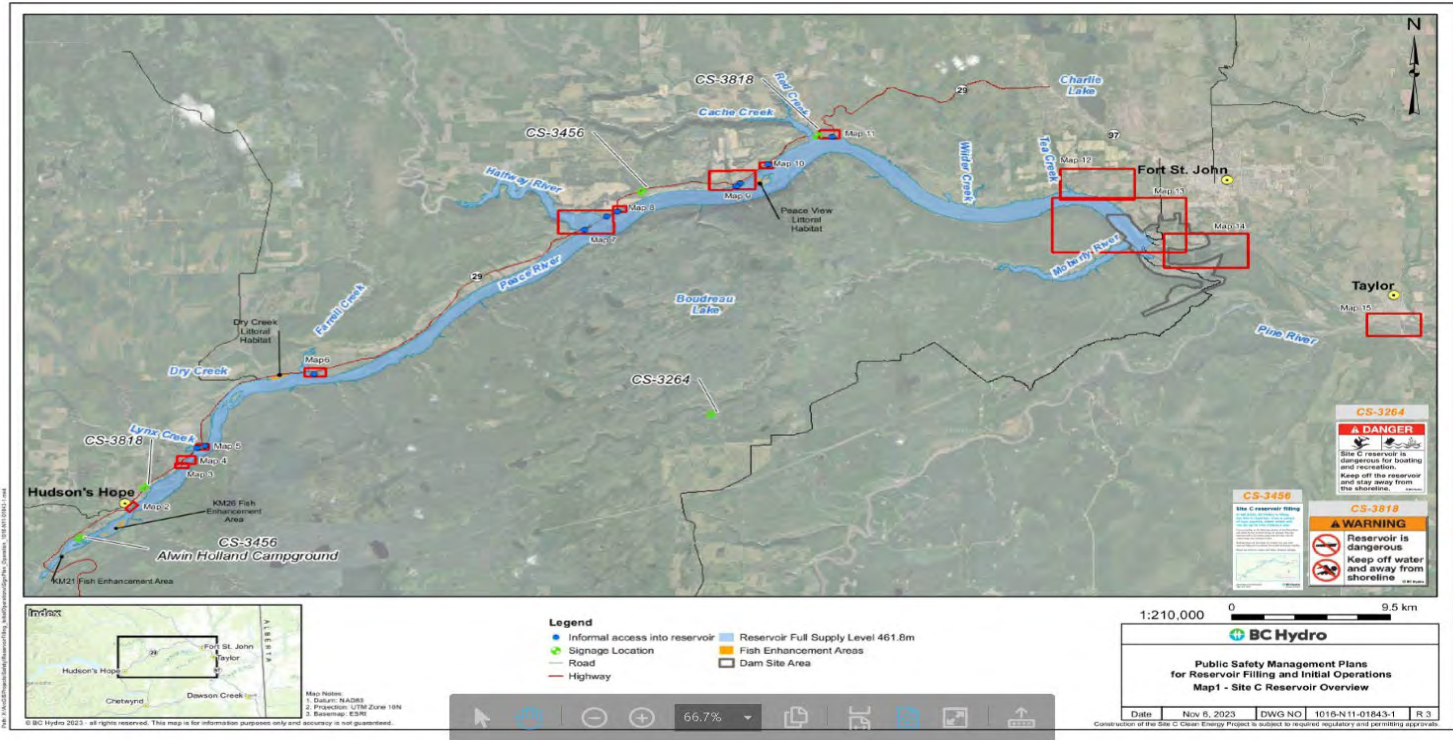
Reservoir Recreational access

- Public is being encouraged to stay off the water and away from the reservoir shoreline during filling and until it's deemed safe.
- There are new hazards including strong currents, submerged hazards, waves, unstable shoreline and erosion, and floating wood debris.
- All public boat launches on the reservoir are closed.
- Expect new boat launches will be inaccessible for at least one year after filling through spring 2026 based on slope stability monitoring and debris management.



Reservoir Filling – Safety Signage

[CS-3550 Reservoir safety info sheet FINAL_0.pdf \(siteproject.com\)](#)



EAC Amendment – Generating Station Capacity

November 27, 2024

Environmental Assessment Certificate Amendment – Generating Station Capacity

- BC Hydro’s Environmental Assessment Certificate currently states that we will be generating up to 1,100 MW of “installed capacity”
- Installed capacity is:
 - the maximum amount of electrical power that the facility is designed to produce under specific conditions
 - Based on the assumption that all generating units are running at full output at the same time

Environmental Assessment Certificate Amendment – Generating Station Capacity

- Our contractors have designed turbines that are more efficient and can produce higher capacity under similar water flows that were assessed in the environmental assessment
- We are currently confirming details, but we anticipate that the total capacity that we will be able to generate will be between 1150 MW to 1230 MW.
- The original capacity of 1100 MW is estimated to power about 450,000 homes
- The increased capacity is estimated to power between 470,000 to 500,000 homes



Environmental Assessment Certificate Amendment – Generating Station Capacity



- Our preliminary assessment of the capacity increase indicates that it will not result in any changes to our environmental assessment findings,
 - We are assessing potential effects on all of the EIS valued components, including fish and fish habitat and vegetation and wildlife
- We plan to share our draft amendment request and results of our assessment with you early in 2025

Questions?



Site C Reclamation Update

Matt Barnette



Site C - Reclamation Update

Agenda:

1. Reclamation overview
2. 2024 reclamation activities
3. 2025 reclamation activities
4. Questions / comments



Planting Area 11, May 2023

Reclamation overview

Approach to reclamation is documented in the Site C Construction Environmental Management Plan (CEMP):

‘ To re-establish native vegetation communities on areas disturbed during Project construction that will not be needed during Project operations. The intended use of the areas after construction will determine how site reclamation and revegetation activities will be conducted and the type of vegetation re-established.’



2024 reclamation activities

1. Planted HWY29 reclamation sites
2. Planted P6 reclamation site
3. Area E physical reclamation
4. Portage Mountain Quarry physical reclamation
5. Northeast Area A physical reclamation



Eastern L3, September 2024

Planted HWY29 reclamation sites



Planted HWY29 reclamation sites



Lynx Creek West, August 2024



Farrell Creek West, August 2024

Planted P6 reclamation site



Native grassland, August 2024



Coyote Willow, August 2024



Planted P6 reclamation site



Area E physical reclamation



Area E physical reclamation



Ripping grassland areas, October 2024

Area E physical reclamation



Furrowing woodland areas, October 2024

Area E – November 2024



Area E physical reclamation



Hydroseeding, November 2024



Portage Mountain Quarry physical reclamation and planting



Portage Mountain – October 2020



Portage Mountain Quarry – July 2024



Northeast Area A physical reclamation



2025 reclamation activities

1. Planting Area E
2. Planting Portage Mountain Quarry
3. Planting Northeast Area A
4. Planting P3 P8
5. Central Area A physical reclamation



Planting Area E



Saskatoon, August 2024

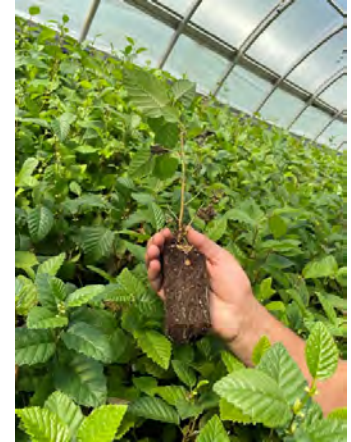


Prickly Rose, August 2024

Planting Portage Mountain Quarry



Balsam Poplar, August 2024



Sitka Alder, August 2024

Planting P3 P8



Black Cottonwood, August 2024



River Alder, August 2024

Planting Northeast Area A

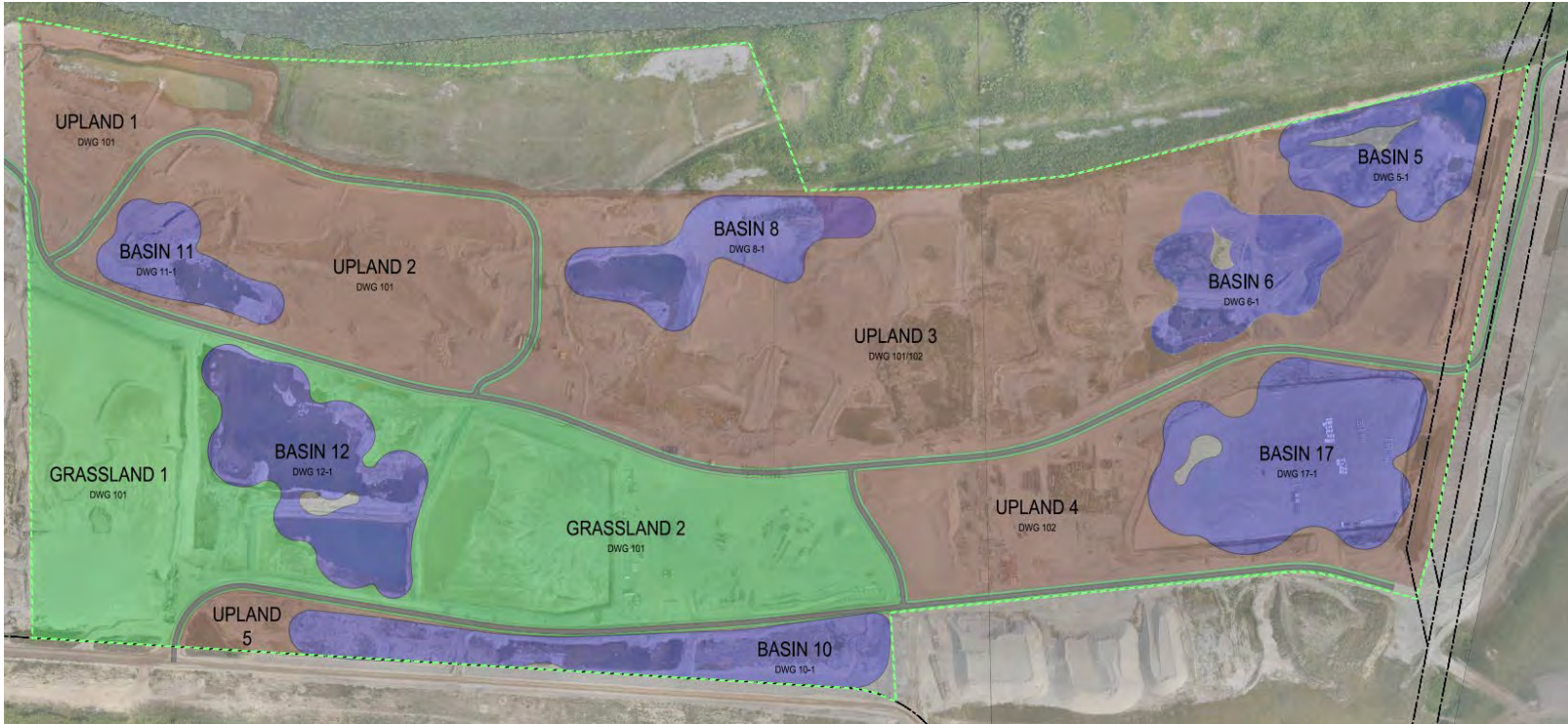


White Spruce, August 2024



Trembling Aspen, August 2024

Central Area A physical reclamation



Central Area A – October 2024

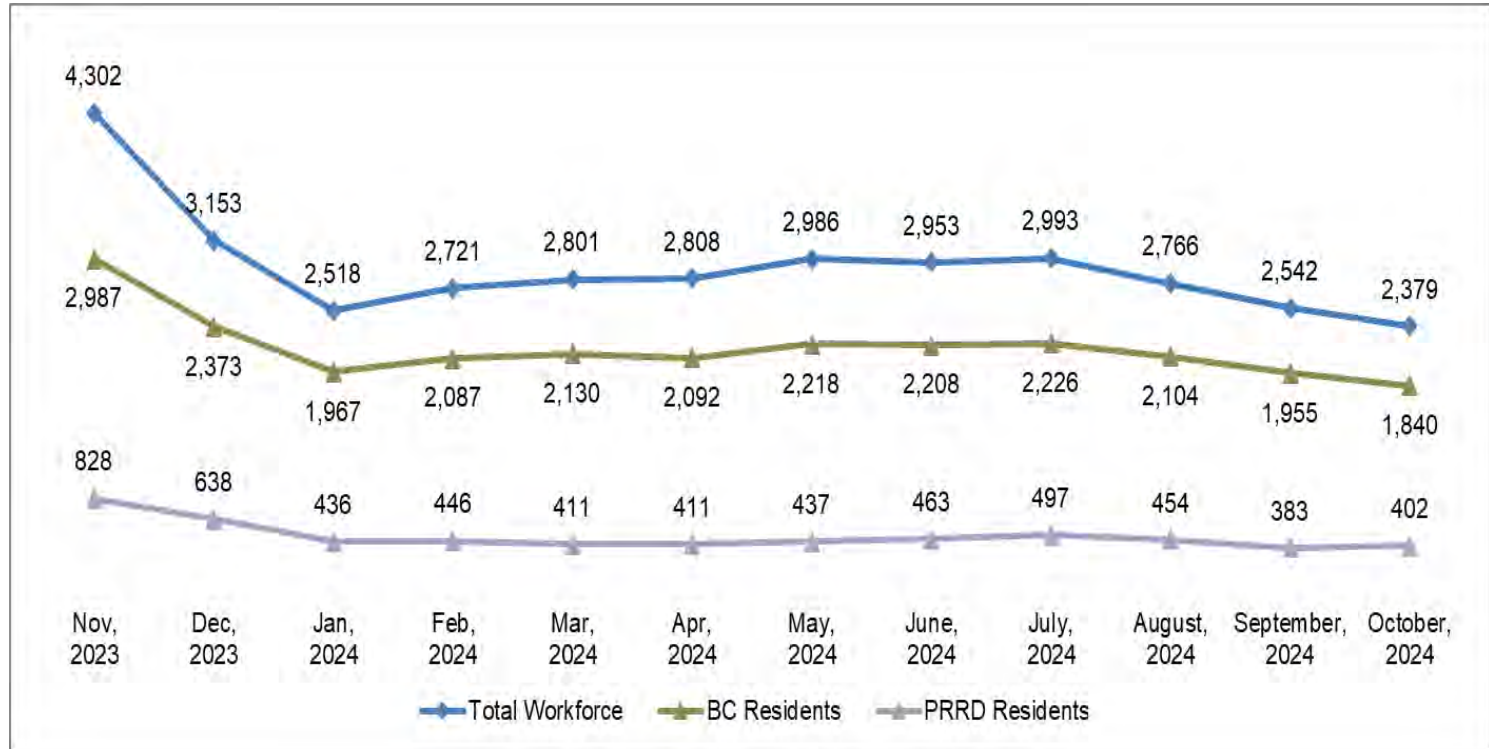


Employment Statistics – October 2024

- The **October** workforce numbers are the total workforce numbers and include workers working off the dam site area, workers working from home and/or workers who may have been on site at any time in that month.
- BC Hydro requires all major contractors to report employment information.
- Total of **2,379** workers in **October 2024**: **1,840** from **BC** (77%), **402** from PRRD (24%)

Site C Employment Statistics – October 2024					
	# of Total Workers	# of B.C. Primary Residents	% of B.C. Workers	# (and %) of PRRD Primary Residents	% of Northeast labour force
Construction and Non-Construction Contractors⁴ <i>Excludes work performed outside of B.C. (e.g., Manufacturing)</i>	1,691	1,224	72%	402 (24%)	1.1%
Engineers and Project Team⁵	688	616	90%	---	---
Total Workforce	2,379	1,840	77%	---	---

Site C Jobs Annual Trends



2024 Q3 Regional Business Participation

Companies engaged by BC Hydro and Site C contractors to provide goods and services in relation to Site C construction between July to September

Community	# of businesses	Community	# of businesses
Charlie Lake	1	Moberly	3
Chetwynd	2	Montney	1
Dawson Creek	2	Prince George	12
Fort St. John	20	Tumbler Ridge	1
Hudson's Hope	1		
Total		43	

Site C Operations Staff

Permanent full-time positions:

- Management: Regional, Area, and Crew managers - 6
- Administrators - 3
- Electricians - 9
- Mech/Millwright - 5
- General trades - 7
- Communication Protection and Control Technicians - 5 vacant
- Project manager - 1
- Natural Resources Specialist - 2

Current and future employment opportunities will be posted on the BC Hydro website - [Work with us](#).

Questions?

