

Darren Kahl
Executive Vice President
Site C Clean Energy Project
P.O. Box 49260
Vancouver, B.C. V7X 1V5

March 1, 2024

Re: Notice of Site C Construction Activities: April to June 2024

As part of our engagement with Indigenous Nations, we share regular updates and information about Site C construction activities. This letter describes the construction work planned for April 1 to June 30, 2024. You can also [read this email online](#).

Work on the Site C project continues to advance on schedule, as we prepare for reservoir filling to begin in late summer or early fall 2024. The project remains on-track to achieve first power in 2024 and have all six generating units in-service in 2025.

For the upcoming period, our focus will be on advancing critical work, including transmission tower installation and line stringing; construction and commissioning of the intake and spillway gates; and penstock upper and lower flexible couplers, in addition to the other work outlined below.

Construction activities: April to June 2024

- Progression of earthworks at the dam site.
- Construction of a drainage channel on the left bank of the river.
- Construction and commissioning of the spillway and intake gates.
- Construction and installation of the penstock flexible couplings for Units 1 to 6.
- Construction of the turbines and generators equipment.
- Installation of transmission towers and transmission line stringing between the substation and the powerhouse.
- Construction of the balance of plant (mechanical, electrical, architectural scopes).
- Construction of the permanent fishway facility.
- Hauling of riprap from West Pine Quarry to site via train and possibly trucks through Chetwynd and Jackfish Lake Road.
- On-call archaeological studies, as required.
- Decommissioning of the [conveyor belt system](#).

For all activities described in this letter, the [necessary approvals](#) will have been obtained before work begins. Geotechnical site investigations, air quality monitoring, heritage and other field studies are ongoing. We'll continue to provide [annual field study notices](#) of these activities.

For the safety of the public and workers, please use caution when hunting, shooting, or setting traps in Site C project areas.

The following information outlines work taking place in different areas of the project.

Dam site

- **Access roads:** Crews will continue to maintain dam site access roads and existing south bank resource roads, including petroleum development roads.
- **Diversion headpond:**
 - The Peace River was diverted in October 2020. During the river diversion phase, water accumulates behind the upstream cofferdam in what is called a headpond. The headpond begins at the dam site and could extend as far back as 15 kilometres – or approximately up to Cache Creek.
 - This means water levels could rapidly rise in areas upstream of the dam site.
- **Main civil works and infrastructure:**
 - Excavation, hauling and stockpiling of aggregate within the dam site.
 - Construction in the left bank drainage adit and right bank drainage tunnel.
 - Rail and possible truck delivery of riprap to site and placement on the dam, tailrace, and approach channel.
 - Permanent dam site road construction.
 - Construction of a drainage channel on the left bank of the river.
 - Haul road realignments on the dam site.
 - Reclamation and recontouring of completed areas of the dam site.
- **Permanent fishway facility:** Construction of the permanent fishway will continue.
- **Generating station, spillways, and right bank foundation enhancements:**
 - Construction and commissioning of the spillway and intake gates.
 - Installing the penstock flexible coupling for Units 1 to 6.
- **Turbines and generators:**
 - Installation of the turbine and generator components in the powerhouse will continue.
 - Assembly of generator components will continue inside the powerhouse main service bay and at the contractor's on-site shop.
- **Balance of plant:**
 - Electrical and mechanical equipment components will continue to be safely delivered to and installed at site.
 - Installation of electrical and mechanical equipment inside the powerhouse, intakes and spillways will continue.
 - Construction of control rooms and office space within the powerhouse will continue.

- **Transmission lines:** Construction of three 500 kilovolt transmission lines between the Site C substation and the Site C generating station will continue.

Public roads and highways

- **Highway 29:** Final paving of the intersection of Highway 29 and the future Halfway River boat launch will take place in the spring. The installation of rumble strips will occur in the spring/summer.

Peace River and reservoir area

- **Boat launches:** The existing boat launch at Halfway River will open for the start of the boating season in spring 2024. It will remain open until we begin reservoir filling in late summer or early fall 2024.
- **River closure:** A short section of the Peace River is permanently closed at the dam site.
- **In-river debris management systems:** Debris management structures are in place on the Moberly River. The debris boom on the Peace River will be reinstalled for April 1 and the start of the local basin flood season.
- **Archaeology:** On-call archaeological studies, as required, anywhere on the project.
- **Removals:** Environmental clean-up of found contamination will take place. Acquired residences and structures located within impact lines will be removed or relocated. Fences on acquired properties will be removed.
- **Surveys and site investigations:** Will take place within the footprint of the reservoir area.

Production and transport of materials

- **Conveyor belt system:** The conveyor system has completed the transfer of till materials to site and its removal will continue.
- **West Pine Quarry:** Blasting will resume at the quarry in April, when the blasting window re-opens.
- **Area E:** Materials transfer to the dam site is now complete.
- **Debris management:** Burning of waste wood may occur in early spring during approved venting windows and when ground conditions are suitable.

Environmental Assessment Certificate

Environmental Assessment Certificate #E14-02 for the project consists of Schedule A, the project description, and Schedule B, the conditions under which the project must be built and operated. If we wish to make a change to either Schedule A or Schedule B of the Environmental Assessment Certificate, we are required to submit a written request to the Environmental Assessment Office (EAO). The EAO consults with regulatory agencies, Indigenous Nations and/or the public on the request and issues a written decision on the request.

To date, we have requested and been granted 11 amendments to the Environmental Assessment Certificate. The most recent Amendment allows BC Hydro to retain temporary structures permanently in the reservoir and become submerged if retaining the structures will not have an adverse effect on fish or fish habitat.

BC Hydro is complying with all conditions of the Environmental Assessment Certificate and its amendments.

Water Licences and Leaves to Commence Construction/Diversion

We hold Water Licences for the diversion and use of water, the storage of water, and for the temporary and permanent fish passage facilities. During construction, we will apply for a series of Leaves to Commence Construction under the Water Licences to construct project works or components of project works. Construction-related activities under the Leaves to Commence Construction are also independently reviewed by the Independent Engineer and the Independent Environmental Monitor as required by the Water Licences.

To date, we have obtained Leaves to Commence Construction authorizing construction works, including but not limited to excavations and construction of cofferdams; generating station civil works and spillway civil works; construction of the temporary and permanent fish passage facilities, reservoir clearing and boat launch construction, Hudson's Hope berm construction, turbines and generators installation, balance of plant works, and right bank foundation enhancements.

In May 2023, the Water Sustainability Act Engineer issued a Leave to Commence Diversion under the Water Licences. This Leave authorizes tunnel conversion, reservoir filling, wet testing and commissioning of the generating units and hydromechanical gates and decommissioning of the diversion tunnels. In spring 2024, we will submit our request for a Leave to Commence Operation of the generating units.

Notice of completed activities

View all previously completed work in our [construction bulletins and notification letters](#).

What to expect during construction

During this period, the following can be expected:

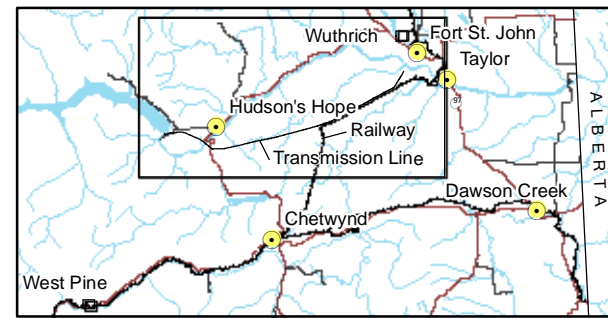
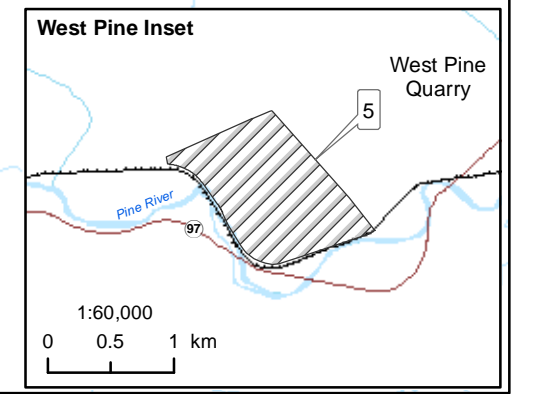
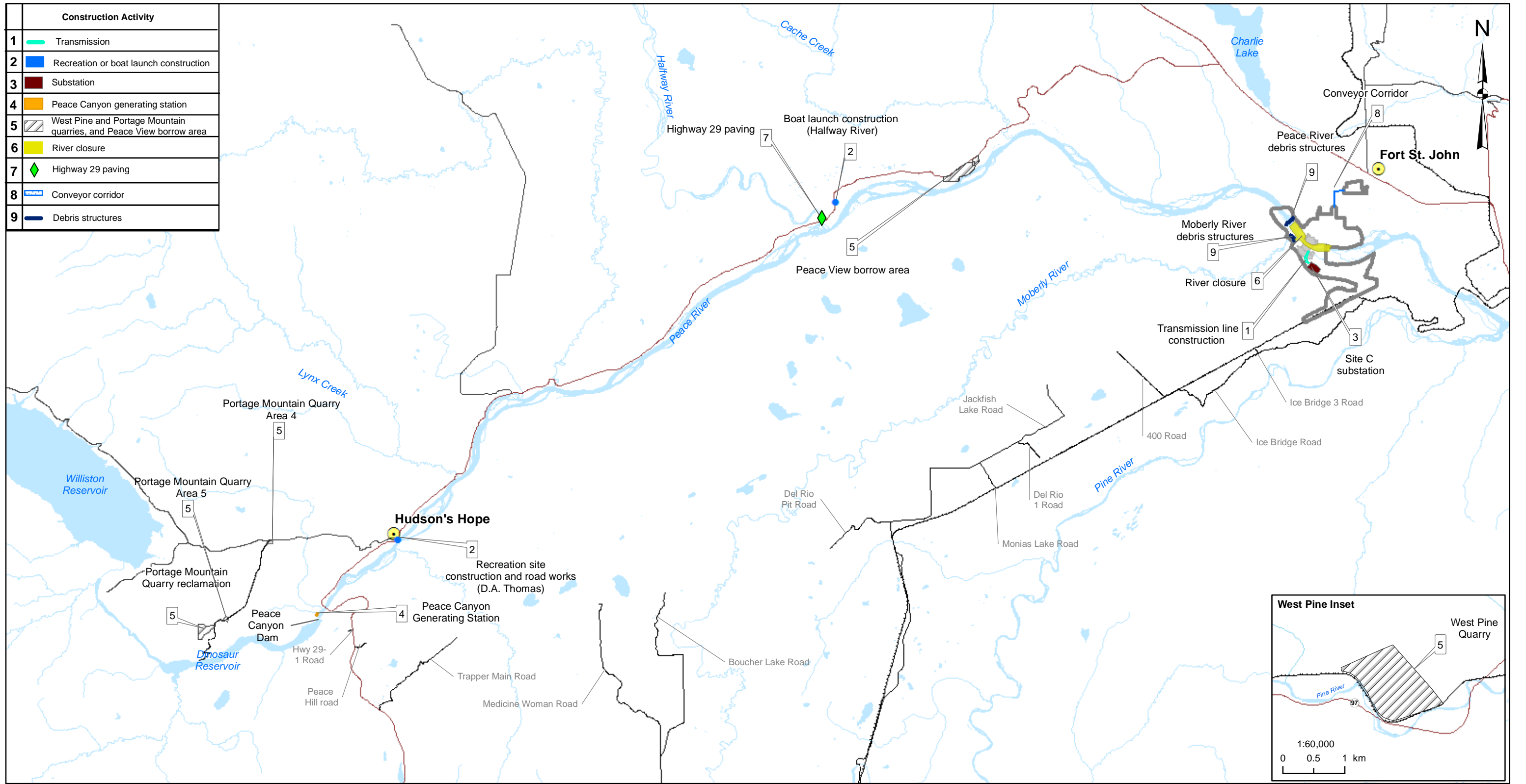
- **The Peace River remains closed** both immediately upstream and downstream of the dam site; caution should be exercised at the shoreline. Public safety signs and beacons have been installed on both banks of the Peace River, and on both sides of the dam site, to mark the active construction area.
- There will be project-related traffic on public roads leading to the dam site, transmission line corridor, reservoir, and Highway 29.
- We're monitoring air quality in the Site C project area. This data is being added to the Ministry of Environment's [B.C. Air Quality Monitoring Data](#). The Ministry uses this data to report on air quality trends. In the event of poor air quality, the Ministry will release air quality advisories through a notification list. If you're interested in being part of this notification list, please email sitec@bchydro.com.

Kindest regards,



Darren Kahl
Executive Vice President, Site C | Clean Energy Project

Construction Activity	
1	Transmission
2	Recreation or boat launch construction
3	Substation
4	Peace Canyon generating station
5	West Pine and Portage Mountain quarries, and Peace View borrow area
6	River closure
7	Highway 29 paving
8	Conveyor corridor
9	Debris structures



Map Notes:
 1. Datum: NAD83
 2. Projection: UTM Zone 10N
 3. Base Data: Province of B.C.

Legend

- Dam Site Area
- Road
- Highway

The construction activities presented in this map are indicative only and may change as a result of procurement and project planning advancements.

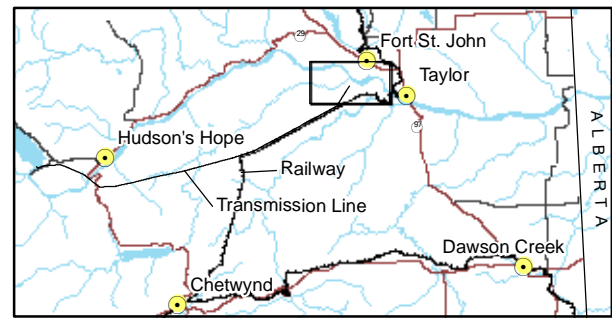
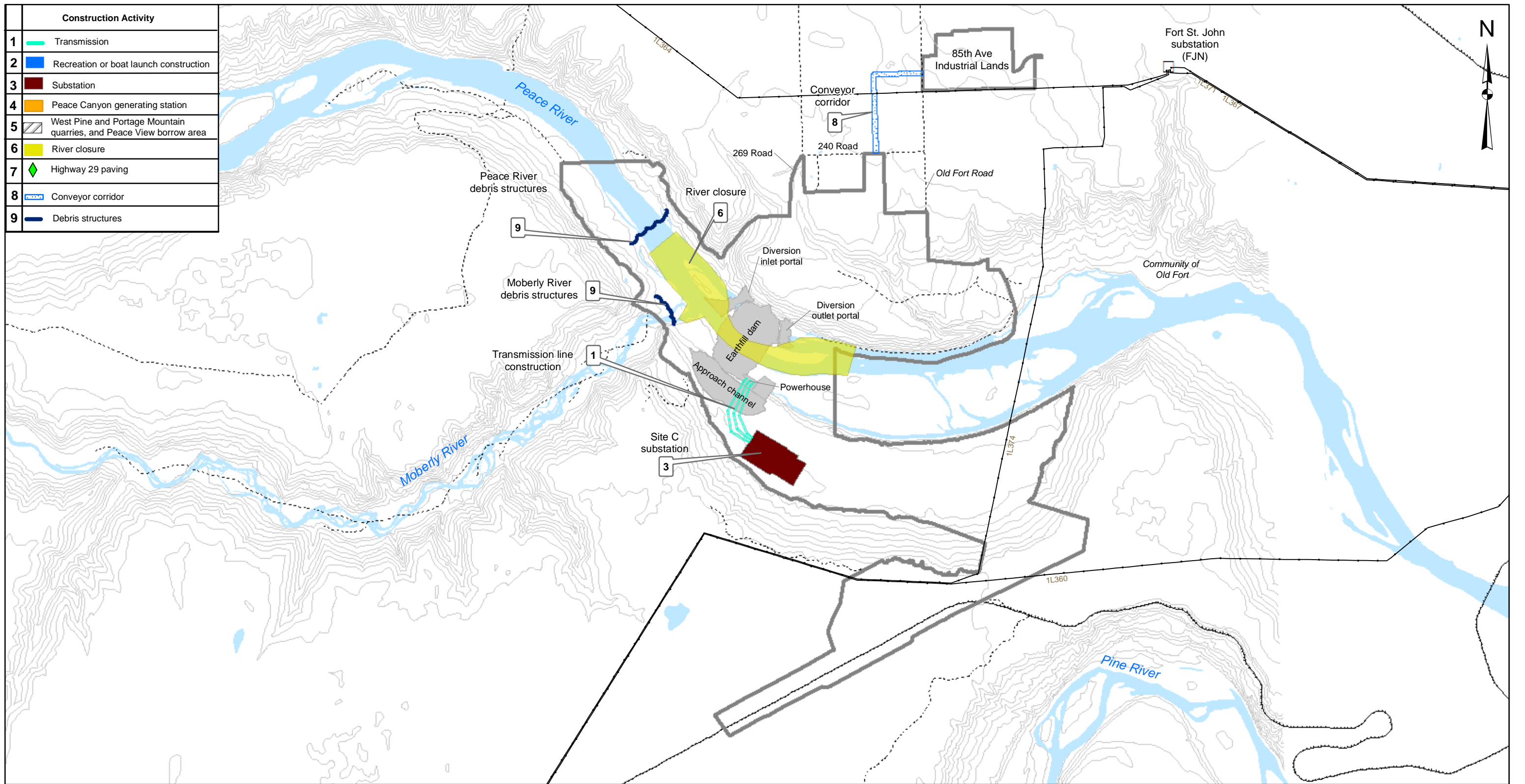
1:250,000 0 12.5 km

BC Hydro

**Construction Activities
 April 1st to June 30th, 2024**

Date	Feb. 07, 2024	DWG NO	1016-N11-01810-1	R 3
------	---------------	--------	------------------	-----

Construction Activity	
1	Transmission
2	Recreation or boat launch construction
3	Substation
4	Peace Canyon generating station
5	West Pine and Portage Mountain quarries, and Peace View borrow area
6	River closure
7	Highway 29 paving
8	Conveyor corridor
9	Debris structures



Map Notes:
 1. Datum: NAD83
 2. Projection: UTM Zone 10N
 3. Base Data: Province of B.C.

Legend

- Dam Site Area
- Railway
- Existing Road
- Existing Transmission Lines

The construction activities presented in this map are indicative only and may change as a result of procurement and project planning advancements.

1:50,000 0 2 km

Construction Activities April 1 st to June 30 th , 2024 (Dam Site Area)			
Date	Feb. 07, 2024	DWG NO	1016-N11-01810-2 R 3