

## Oversized loads on Old Fort Road

### *Traffic delays expected*

In April 2019, BC Hydro will begin transporting large penstock equipment from a fabrication facility in Fort St. John to the Site C dam site.

Because of their size, the penstocks will be moved in segments by oversized trucks, which will result in partial road closures and traffic delays along Old Fort Road during the scheduled delivery times.

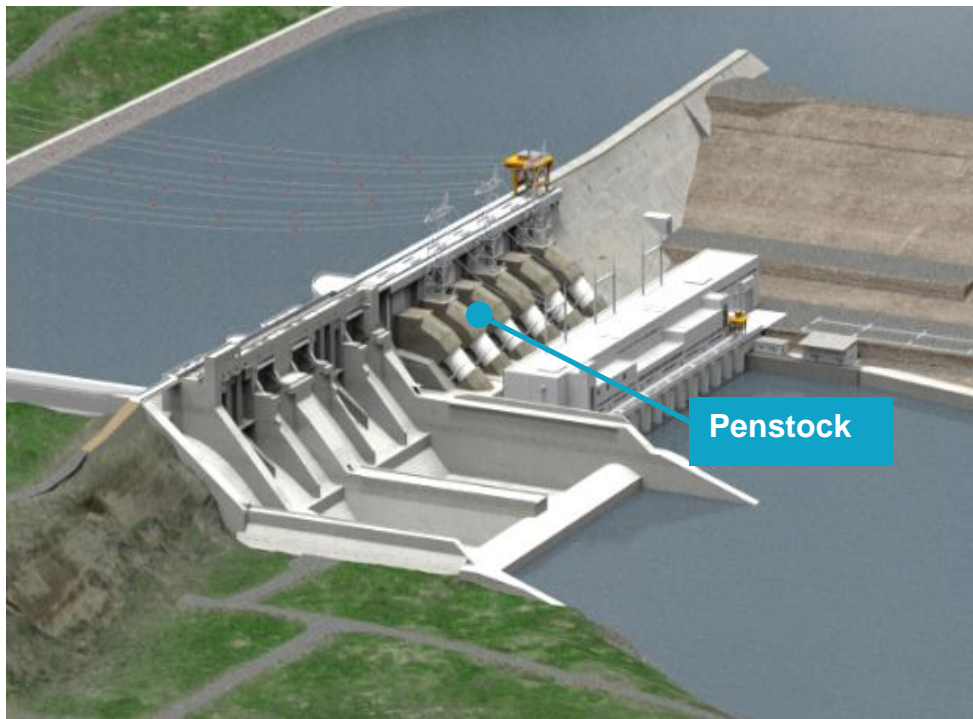
To minimize the impact on daytime commuters, these deliveries will occur overnight, between the hours of 10 p.m. and 5 a.m. Some nighttime commuters may need to adjust their travel plans during the delivery windows or be prepared for delays.

A traffic management plan has been developed and BC Hydro is committed to communicating the delivery schedule in advance through road signage and notifications on [SiteCproject.com](http://SiteCproject.com).

### What is a penstock?

BC Hydro is building six penstocks, each 10 metres in diameter and nearly 80 meters in length which will channel the flow of water into the Site C generating station.

The penstocks are being fabricated locally in Fort St. John. As they are completed, sections of the penstock will be delivered to site every one to two weeks. We will then assemble them on site.



# Construction Notification: Old Fort Road - April 2019

## What to expect

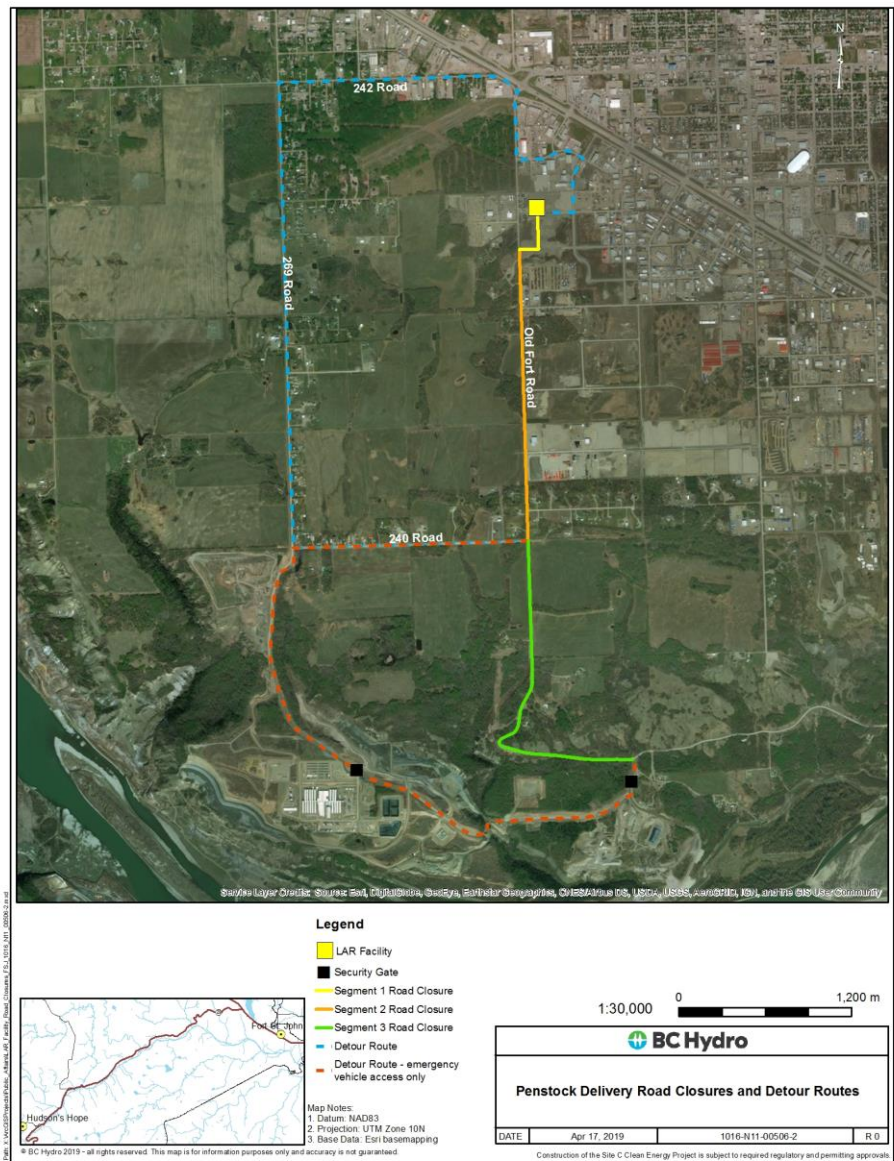
- Deliveries will occur between April 2019 and June 2021.
- Trucks with oversized loads spanning the width of the road will travel down Old Fort Road.
- Every one to two weeks, a load will be transported in a two-hour window between 10 p.m. and 5 a.m. Monday through Friday.
- Rolling road closures will result in delays of 10 to 35 minutes. Some detours will be in place.
- There will be traffic control and safety vehicles tailing over-sized truck loads.

## Old Fort Road will be closed for approximately 30 minutes at a time in two segments:

- **91 Ave. to Old Fort Rd.** (5 minute closure)  
Minimal disruption and various alternate routes available
- **Old Fort Rd. from 89 Ave. to 240 Rd.** (35 minute closure)  
Traffic redirected around via 242 Grandhaven Rd., 269 Dump Rd. and 240 Rd.
- **Old Fort Rd. from 240 Rd. to Site C Gate B** (25 minute closure)  
No detour available.  
Emergency first responder vehicles will be escorted through site.

Segments may have overlapping closures for up to 10 minutes.

Traffic control will be in place while oversized deliveries occur. Please drive carefully. Always follow the directions of traffic personnel and see road signage for alternate routes.



For the latest traffic information, visit [SiteProject.com](http://SiteProject.com) and [@SiteCProject](https://twitter.com/SiteCProject) on Twitter.