

# Business-to-Business Networking

## Worker Accommodation Procurement

July 29, 2014

# Agenda

**Welcome, Site C Project  
Overview**

**Dave Conway, Community  
Relations Manager, Site C**

**Worker Accommodation**

**Anthony Radman, Procurement  
Lead, Site C**

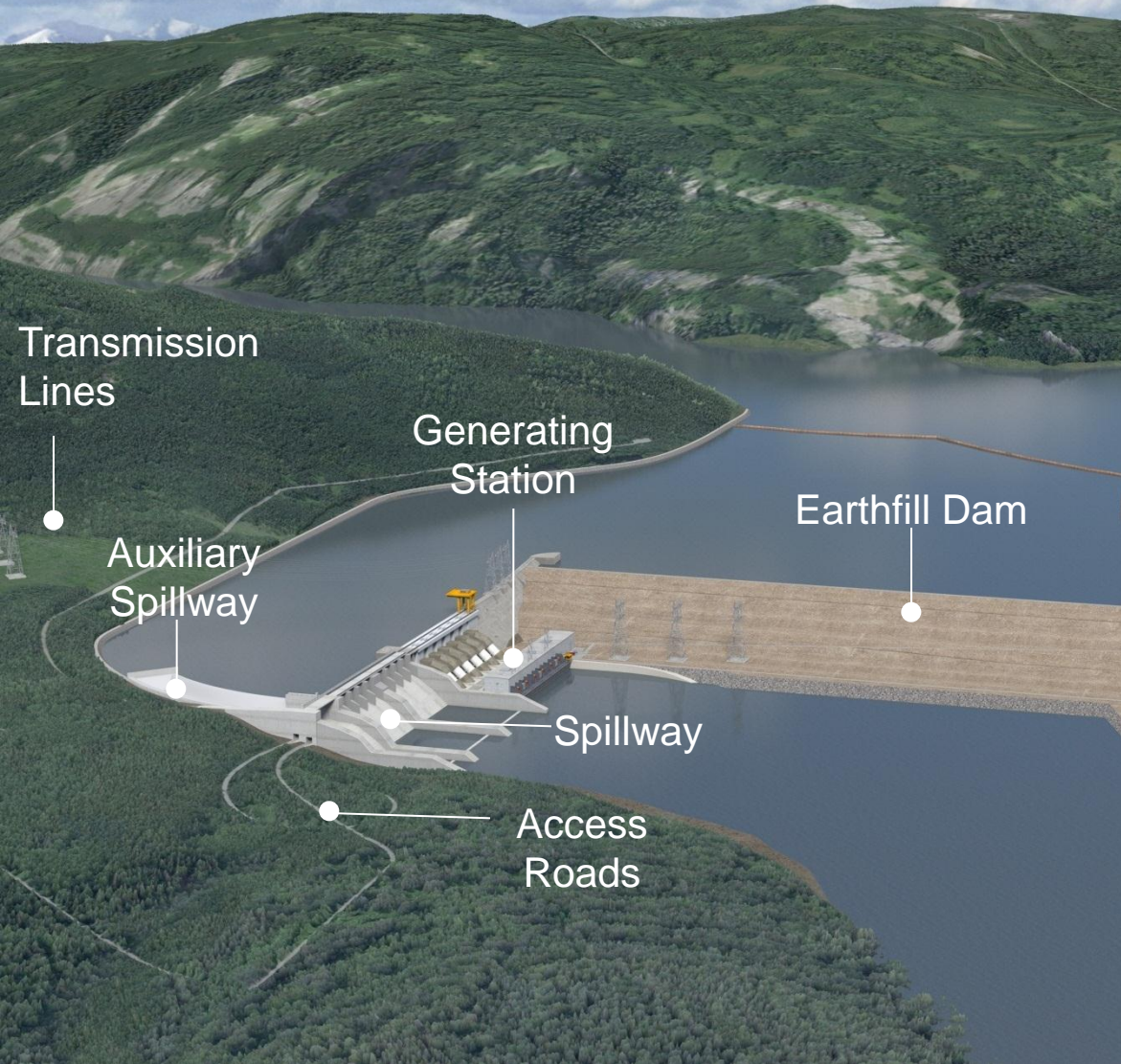
**Networking Session Overview**

**Dave Conway**

**Networking**

**All**

## SITE C



## OTHER PROJECT COMPONENTS

- Realignment of 30 kilometres of Highway 29
- Shoreline protection at Hudson's Hope
- Two new 500 kilovolt AC transmission lines
- Access roads and a temporary construction access bridge
- Two ten-metre-diameter tunnels and associated cofferdams
- Worker accommodation



# PROJECT BENEFITS



- Clean, renewable and cost-effective electricity for 100+ years
- Dependable energy to meet peak demand
- 10,000 direct jobs during construction; 33,000 total jobs
- Regional Legacy Benefits Agreement: \$2.4 million/year to PRRD for 70 years
- Communities to benefit from infrastructure improvements, recreation and tourism opportunities, and affordable housing
- Low GHG emissions

## Worker Accommodation Objectives

- Safety for public and workers
- Workforce attraction, retention and well-being
- Site C construction productivity, cost and schedule
- Being appropriately timed and scaled to meet occupancy requirements
- Support the Site C objectives, including providing economic opportunities for Aboriginal groups, northern communities and the province



# Worker Accommodation at the Dam Site

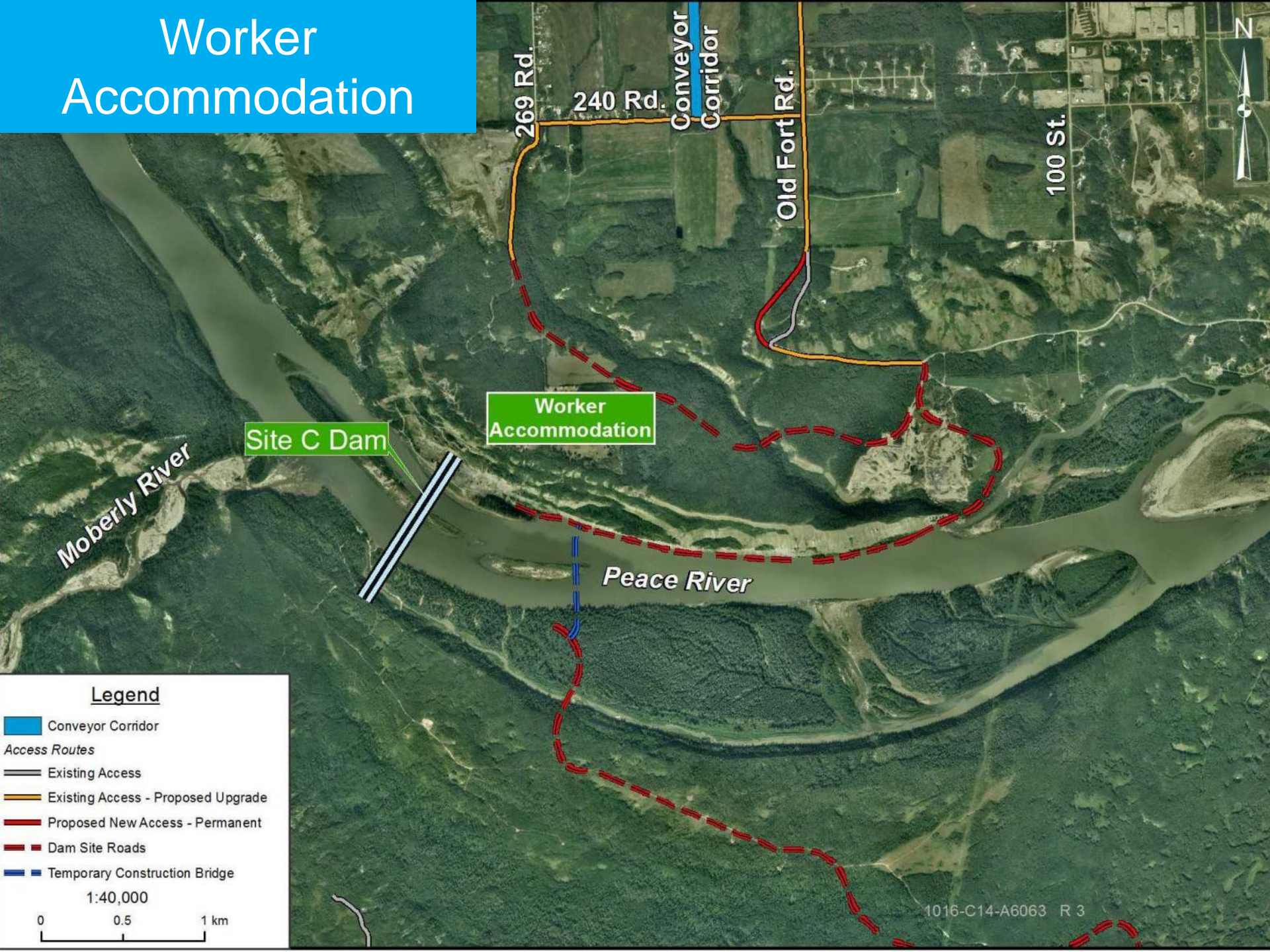
- **Scope:**
  - Construction, installation and operation of dam site accommodation for 1,600; scalable to meet peak demand
  - Camp operations and services to be self-sufficient; water supply and sewage treatment and disposal; waste disposal
  - Recreation, professional services and amenities for workers

*Sample artist rendering of worker accommodation camp*





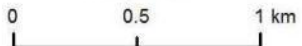
# Worker Accommodation



## Legend

- Conveyor Corridor
- Access Routes
  - Existing Access
  - Existing Access - Proposed Upgrade
  - Proposed New Access - Permanent
  - Dam Site Roads
  - Temporary Construction Bridge

1:40,000



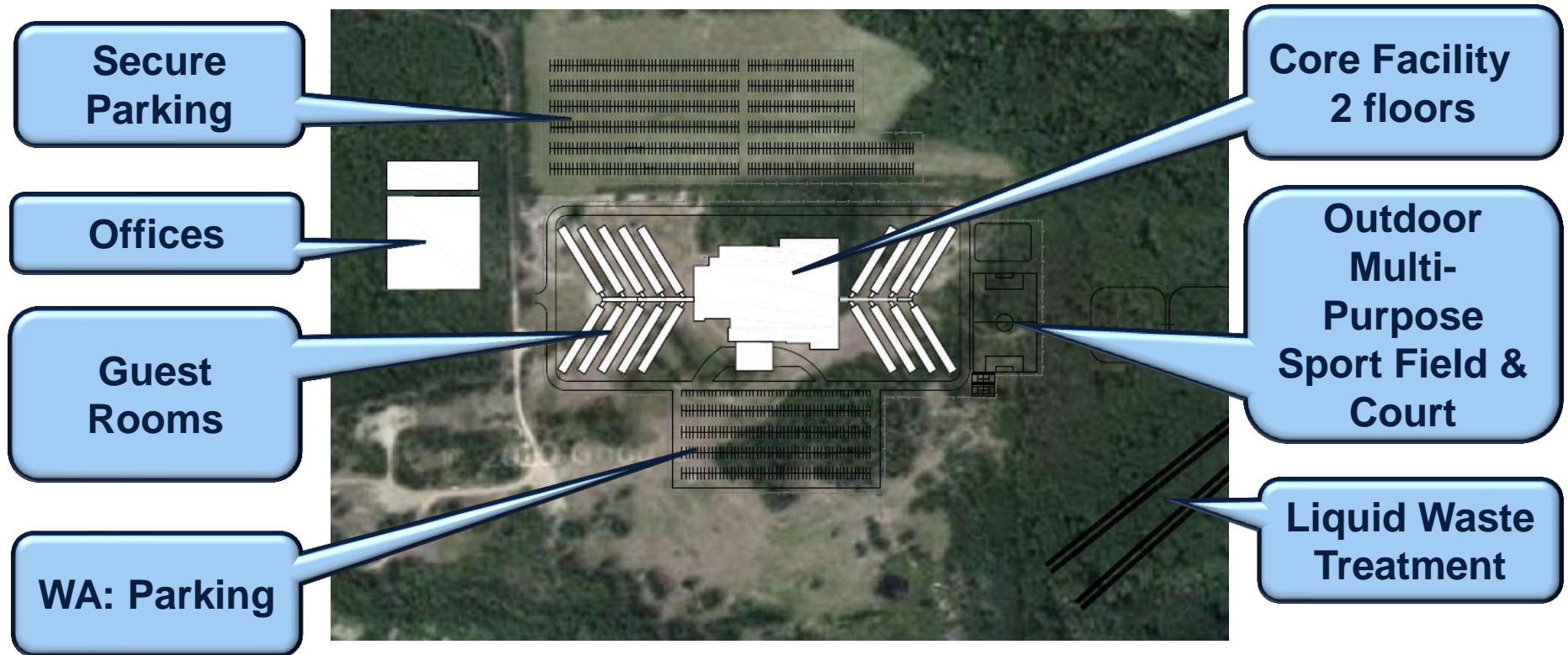
1016-C14-A6063 R 3

## Anticipated Schedule

Activity	Timeline
• RFQ Issued	• March 2014
• B2B Networking, Fort St. John	• July 29-30, 2014
• Proponents confirmed / RFP issued	• August 2014
• Contract Award	• Spring 2015



# Worker Accommodation: Indicative Design



## General

- Lobby area
  - Registration
  - Mudroom
  - Security
  - Luggage storage (short / long term)
- Common Area
  - Commissary
  - Coffee Shop
  - Medical services area
- Shuttle receiving area
  - Weather-protected and heated shelters
- Counseling
- Training rooms
- IT services
- Central / personal laundry
- Housekeeping services
- Spiritual gathering place
- Library

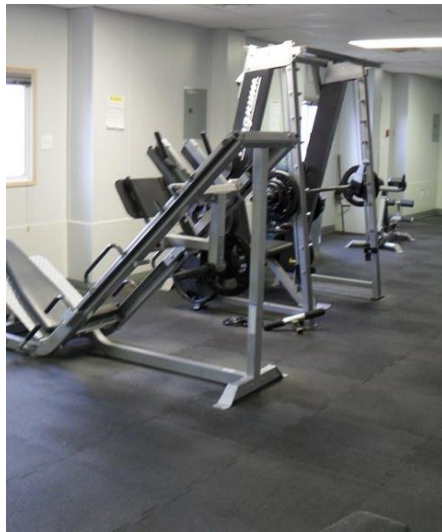
*Photographs for illustrative purposes only and taken from a variety of worker camps.*



## Fitness and Recreation

- Gymnasium
  - individual and group activities
- Outdoor recreation
  - programmed activities
- Indoor running track
- Multi-use playing field
- Multi-use paved court
- Recreation and socializing spaces
- TV and games rooms
- Tiered theatre
- Limited Licensed Lounge

*Photographs for illustrative purposes only and taken from a variety of worker camps.*





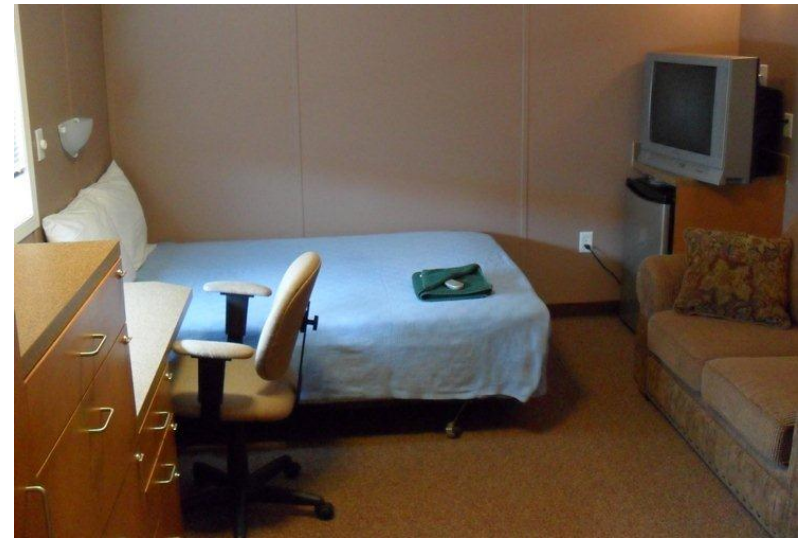
## Dining

- Central Food Services
  - Servery
  - Seating area
  - Lunch pick-up area

## Guest Rooms

- Double beds
- Private bathroom
- Desk
- Clothing storage
- Television
- Wifi

*Photographs for illustrative purposes only and taken from a variety of worker camps.*



- Three respondent teams have been shortlisted to move forward in discussions with BC Hydro for the design, construction, partial financing, operation and maintenance of worker accommodation at the dam site for the Site C Clean Energy (Site C) Project.
- The next step is to confirm these three respondent teams as the shortlisted proponents who will receive the Request for Proposals to be issued in August 2014. A preferred proponent is expected to be selected in early 2015, followed by contract award in spring 2015.
- Site C requires environmental certification and other regulatory permits and authorizations, and approvals before it can proceed to construction.

PEACE RIVER HOUSING PARTNERS	PLENARY LIVING	TWO RIVERS LODGING GROUP
<ul style="list-style-type: none"> <li>• Forum Equity Partners Inc.</li> <li>• Aecon Group Inc.</li> <li>• Sodexo Canada Ltd.</li> <li>• Brookfield Financial Corp.</li> <li>• Champion Canada International ULC</li> <li>• Cormode &amp; Dickson Construction Ltd.</li> </ul>	<ul style="list-style-type: none"> <li>• Plenary Group (Canada) Ltd.</li> <li>• Aramark Remote Workplace Services Ltd.</li> <li>• Britco LP</li> <li>• Jacob Bros. Construction Ltd.</li> <li>• Black Diamond Group Ltd.</li> </ul>	<ul style="list-style-type: none"> <li>• Atco Structures and Logistics Ltd.</li> <li>• Bird Capital Limited Partnership</li> <li>• Bird Design Build Construction Inc.</li> </ul>

## Business-to-Business Networking

- Each shortlisted team will have representatives at two tables in the conference room.
- Please line-up to speak with a representative at **one** of the shortlisted team's tables.
- You will have **three minutes**; you will be notified when there is **one minute** remaining.
- At the end of your time, please rotate to a **different** shortlisted team's table.





For more information...



[www.sitecproject.com](http://www.sitecproject.com)