

Ken McKenzie  
Executive Vice President  
Site C Clean Energy Project  
P.O. Box 49260  
Vancouver, B.C. V7X 1V5

June 1, 2021

## **Re: Notice of Site C Construction Activities: July – September 2021**

As part of our engagement with Indigenous groups, we provide regular updates and information on construction activities. This letter describes the work planned from July 1 to September 30, 2021.

### **COVID-19 update**

We continue to work closely with health officials, local communities, contractors and unions to monitor and respond to the COVID-19 pandemic. We're adhering to strict health and safety protocols as we work towards critical milestones.

Safety continues to be our top priority. We are committed to safely and responsibly advancing the Site C project, while protecting the workforce and the local community. You can keep up-to-date with our COVID-19 measures [here](#).

### **For the upcoming period, construction at Site C will focus on:**

- Progression of earthworks at the dam site.
- Construction of the powerhouse and spillways.
- Transmission line construction including access road maintenance, site reclamation and line stringing.
- Highway 29 realignments at Cache Creek East, Halfway River, Farrell Creek East, Farrell Creek, Dry Creek and Lynx Creek.
- Clearing, road maintenance and road construction in areas of the future reservoir.
- Building wildlife habitat structures and installation.
- Construction of a 2.6-kilometre shoreline protection berm in Hudson's Hope.
- Blasting, processing and stockpiling of rock at Portage Mountain Quarry. Rock will be hauled to various Highway 29 construction sites, and the Hudson's Hope berm.
- Operating the temporary fish passage.
- On-call archaeological studies, as required.

For all activities described in this letter, the [necessary approvals](#) will have been obtained before work begins. Geotechnical site investigations, air quality monitoring, heritage and other field studies are ongoing. We will continue to provide [annual field study notices](#) of these activities.

For the safety of the public and workers, please use caution when hunting, shooting, or setting traps in the Site C project area.

## Dam site

- **Access roads:**
  - Crews will continue to maintain dam site access roads and existing south bank resource roads, including petroleum development roads.
  - Site security gate enhancements will be implemented.
- **Headpond:**
  - During river diversion, water will accumulate behind the upstream cofferdam in what is called a headpond. The headpond will begin at the dam site and could extend as far back as 15 kilometres – or approximately up to Cache Creek.
  - This means water levels could rapidly rise in areas upstream of the dam site.
  - Caution should be exercised at the shoreline and the river remains closed both upstream and downstream of the dam site.
  - Debris booms on the Peace and the Moberly Rivers capture debris and prevent it from going into the diversion tunnels.
  - The debris boom on the Peace River has been re-installed
  - The removal of debris will be actively managed by a BC Hydro contractor.
- **River diversion:**
  - Learn more about river diversion: [sitecproject.com/diversion](http://sitecproject.com/diversion)
- **Main civil works:** Construction activities will continue. This includes:
  - Excavation of the centre section of the dam core trench.
  - Excavation of the approach channel.
  - Relocation of excavated material to disposal areas located on the north and south banks of the river at the dam site area.
  - Construction of the south bank and north bank drainage tunnels.
  - Concrete production.
  - Grouting of the main dam grout curtain and consolidation grout (left bank, right bank and dam core).
  - Earthfill dam preparation and other civil works.
  - Delivery of dam fill material from the 85th Avenue Industrial Lands to the dam site area via conveyor.
  - Rail delivery of rip rap to site.
  - Haul road realignments in preparation of the main dam core excavation.
  - Work will also continue to refine and optimize a two-part solution to improve the stability of the right bank structures, which extends the foundation deeper into the rock and reduces the amount of groundwater that could accumulate within the bedrock foundation.

- **Generating station and spillways:**
  - Concrete will continue to be placed for the powerhouse intake areas.
  - Installation of powerhouse operations building, Unit 6, and auxiliary service bay superstructures will continue.
  - Sections of the steel penstocks will continue to be delivered to site, where they will be assembled and encased in concrete.
  - Installation of penstock sections will continue.
  - Penstock encasement in concrete will continue.
  - Construction of the spillway stilling basin will continue.
  - Transition block and spillway headworks construction will continue.
- **Turbines and generators:**
  - The turbines and generators contractor will continue with deliveries to site.
  - The on-site shop fabrication work has been completed.
  - The turbines and generators contractor will continue installation in the powerhouse.
  - Welding will continue in the powerhouse.

## Public roads and highways

- **Highway 29**
  - **Cache Creek East:** Construction of the highway realignment and bridge will continue. This includes bridge foundation piling and concrete placement and excavation, processing and placement of material from borrow sites to the new highway alignment. Delivery of bridge steel girders will occur.
  - **Halfway River:** Construction will continue on the highway realignment and bridge. This includes the installation of the cast-in-place bridge deck on the bridge steel girders. Work will also continue on the grading of the new highway alignment. Paving may occur on the new alignment.
  - **Farrell Creek East:** Construction will continue on the highway realignment, including excavation, stripping, hauling and placement of aggregates in the new highway alignment. The installation of an 1,800 mm culvert may occur.
  - **Farrell Creek:** Construction will continue on the highway realignment and bridge. This work will include bridge foundation concrete works, excavation and processing of materials from borrow sites and grading of the new highway alignment.
  - **Dry Creek:** Construction will continue on the highway alignment and bridge. This will include east and west slope treatment, construction of bridge foundations, construction of bridge steel structures and excavation, processing, hauling and placement of materials from borrow sites to the new highway alignment.
  - **Lynx Creek:** Construction of the highway realignment and bridge will continue. This work will include the installation of bridge foundation piles and concrete foundations, stripping of the new highway alignment and excavation, processing, hauling and placement of aggregates from borrow sites, including Gates Island, to the new highway alignment. A temporary detour will be installed to relocate

traffic to allow construction of the permanent highway grade.

### Peace River/reservoir

- **River closure:** A short section of the Peace River is permanently closed at the dam site as construction is now underway on the earthfill dam.
- **River section reopened:** An eight-kilometre section of the Halfway River has reopened to boat traffic. Boaters are urged to observe and obey all signage and to use extreme caution while on the Halfway River, especially when water levels are low. [Read more](#).
- **In-river debris management systems:** Debris management structures have been installed on the Peace River and the Moberly River.
  - The Peace River boom has been reinstalled. A [portage program](#) is available from May 15 to September 15 every year to move non-motorized boats around the area.
- **Fish habitat enhancement project:** Surveying work may take place at the downstream fish habitat enhancements.
- **Archaeology:** On-call archaeological studies, as required, anywhere on the project.
- **Reservoir clearing**
  - Surveys and site investigations may occur within the footprint of the reservoir area.
  - Clearing activities including road building may occur between the dam site and Farrell Creek on the north and south banks of the Peace River.

### Hudson's Hope shoreline protection

- Construction will continue on the Hudson's Hope shoreline protection berm.
- This may include clearing and waste wood removal.
- Riprap and berm filter material will be hauled from Portage Mountain Quarry and stockpiled at the berm site.
- Excavation, processing, stockpiling and placement of berm fill material will occur on the berm site.
- In-river works will continue including placement of riprap, berm fill and berm filter in and adjacent to the river to construct the berm.

### Transmission works

- **Access road maintenance:** Road maintenance on access roads will occur, to provide safe access to the transmission line.
- **Transmission line construction:**
  - Transmission line 5L006 construction will continue with marshalling of transmission line materials for line stringing. This will include flying of materials with a helicopter.
  - Line stringing will occur, including helicopter work.
- **Reclamation:** Reclamation of construction areas will occur, including levelling and spreading of topsoil.

## Production and transport of materials

- **West Pine Quarry:** Riprap will be produced and hauled from West Pine Quarry along Highway 29 for highway construction.
- **Portage Mountain Quarry:**
  - Access roads will continue to be maintained.
  - Blasting is occurring from May 16 – September 14, 2021.
  - Rock will be hauled, processed and stockpiled on site, and hauled to various locations along Highway 29 and the Hudson's Hope berm.
- **85th Avenue Industrial Lands:** Till materials for the dam will be produced.
- **Conveyor belt system:** The conveyor system is operating, as needed.

## Environmental Assessment Certificate

Environmental Assessment Certificate #E14-02 (EAC) for the project consists of Schedule A, the project description, and Schedule B, the conditions under which the project must be constructed and operated. If BC Hydro wishes to make a change to either Schedule A or Schedule B of the EAC, we are required to submit a written request to the Environmental Assessment Office, which then consults with regulatory agencies, Indigenous groups and/or the public on the request and issues a written decision.

To date, we have requested and been granted seven amendments to the EAC. These are:

- Amendment 1 – regarding design changes to the generating station and spillways.
- Amendment 2 – regarding design changes to the Halfway River Bridge within the Halfway River Highway 29 realignment.
- Amendment 3 – regarding the use of West Pine Quarry, in addition to the already approved Portage Mountain Quarry, as a source of quarry and excavated material for the construction of the Highway 29 realignment, Hudson's Hope shoreline protection, and areas along the reservoir requiring protection during reservoir filling.
- Amendment 4 – regarding the selective use of mechanical clearing in riparian zones during reservoir clearing when it is unsafe to undertake manual clearing.
- Amendment 5 – regarding a change in the alignment of Highway 29 at Cache Creek.
- Amendment 6 – regarding the expansion of the worker accommodations camp within the dam site area.
- Amendment 7 – regarding changes to the designs of Highway 29 crossings at Farrell, Dry and Lynx Creeks.
- Amendment 8 – regarding the use of a borrow source located east of the Halfway River for the construction of reservoir clearing access roads.

## Water Licences and Leaves to Commence Construction/Diversion

BC Hydro holds Water Licences for the diversion and use of water, the storage of water, and for the temporary and permanent fish passage facilities. During the course of construction, we will apply for a series of Leaves to Commence Construction (LCCs) under the Water Licences in order to construct particular project works or components of project works. Construction-related activities under the LCCs are also independently reviewed by the Independent Engineer and the Independent Environmental Monitor as required by the Water Licences.

To date, BC Hydro has obtained LCCs for:

- Initial works
- Relocated surplus excavation material (RSEM) storage areas
- North and south bank excavations
- South bank stage 1 cofferdam
- Clearing of the eastern reservoir
- North bank cofferdams and diversion tunnel works
- Roller-compacted concrete (RCC) buttress foundation preparation and RCC placement
- Geotechnical investigations for the Hudson's Hope shoreline protection
- Earthfill dam excavation, foundation preparation, fill placement and approach channel foundation preparation and placement
- Generating station civil works and spillways civil works
- Construction of the temporary fish passage facility
- Stage 2 cofferdams and river diversion, including debris boom facilities on the Peace and Moberly Rivers
- Water licences for temporary and permanent fish passage facilities
- Middle reservoir clearing
- Western reservoir clearing
- Hudson's Hope berm construction
- Turbines and generators installation

BC Hydro also obtained a Leave to Commence Diversion (LCD) in June 2020, covering placement of the rockfill berm into the Peace River, diversion of water through the diversion tunnels, and construction of the stage 2 cofferdams. A separate LCD was also issued in August 2020, authorizing the commissioning of the temporary fish passage facility.

### Notice of completed activities

The following work, described in previous notifications, is complete or is anticipated to be complete by the date of issuance of this letter:

- River diversion
- Site C substation
- Transmission line 5L005

### What to expect

During this time period, the following can be expected:

- [Permanent navigational restrictions](#): Boaters no longer have access to the Moberly River and the Peace River, near the dam site, now that construction is underway on the earthfill dam. Public safety signs and beacons have been installed on both banks of the Peace River, and on both sides of the dam site, to mark the active construction area.

- An eight-kilometre section of the Halfway River has reopened to boat traffic. Boaters are urged to observe and obey all signage and to use extreme caution while on the Halfway River, especially when water levels are low.
- There will be project-related traffic on public roads leading to the dam site, transmission corridor, reservoir and Highway 29, as we continue to haul materials, equipment, rock, and timber. This will include increased industrial traffic on resource roads and public roads from Chetwynd leading to the site on the south bank.
- Day, night and weekend shifts are anticipated for the duration of the project.
- Traffic control will be intermittently in place for construction and investigation activities along Highway 29. This may cause minor traffic delays. Visit [drivebc.ca](http://drivebc.ca) for the latest traffic updates.
- Noise will occur near the construction areas.
- Noise and vibration will result from blasting and other works in the quarries. Hauling may occur at night.
- There will be construction occurring around the Peace River at the dam site.
- We are monitoring air quality in the Site C project area. This data is being added to the Ministry of Environment's [B.C. Air Quality Monitoring Data](#). The Ministry uses this data to report on air quality trends. In the event of poor air quality, the Ministry will release air quality advisories through a notification list. This notification list currently includes the regional media, various public and private sector offices, as well as members of the public. If you are interested in being part of this notification list, please email [sitec@bchydro.com](mailto:sitec@bchydro.com).

### Learn more

BC Hydro is committed to providing you with information about Site C construction activities and has established several ways that you can learn more about the project.

We would be happy to come to your community to discuss the upcoming work in more detail, report on results of field studies and implementation of mitigation plans, and discuss how best to communicate with your community.

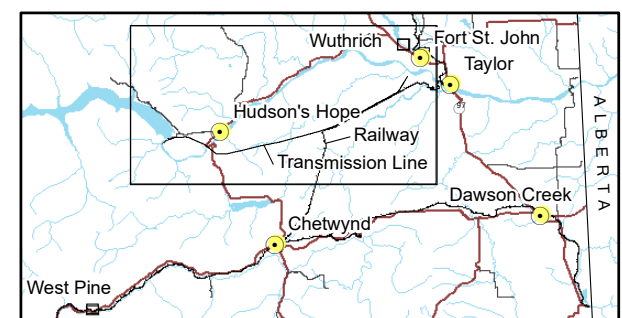
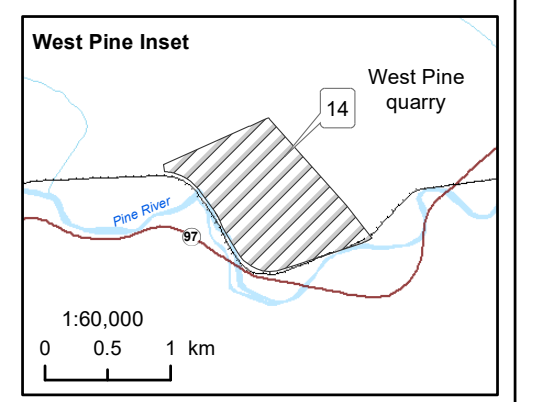
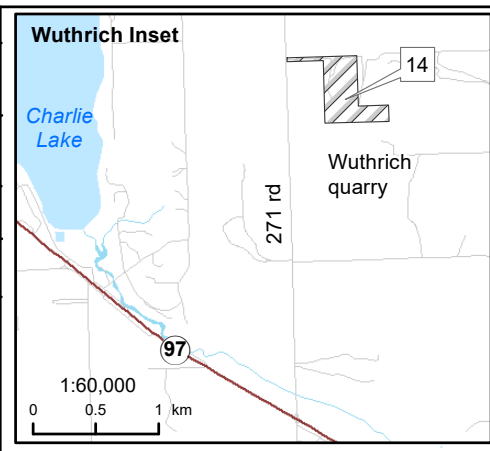
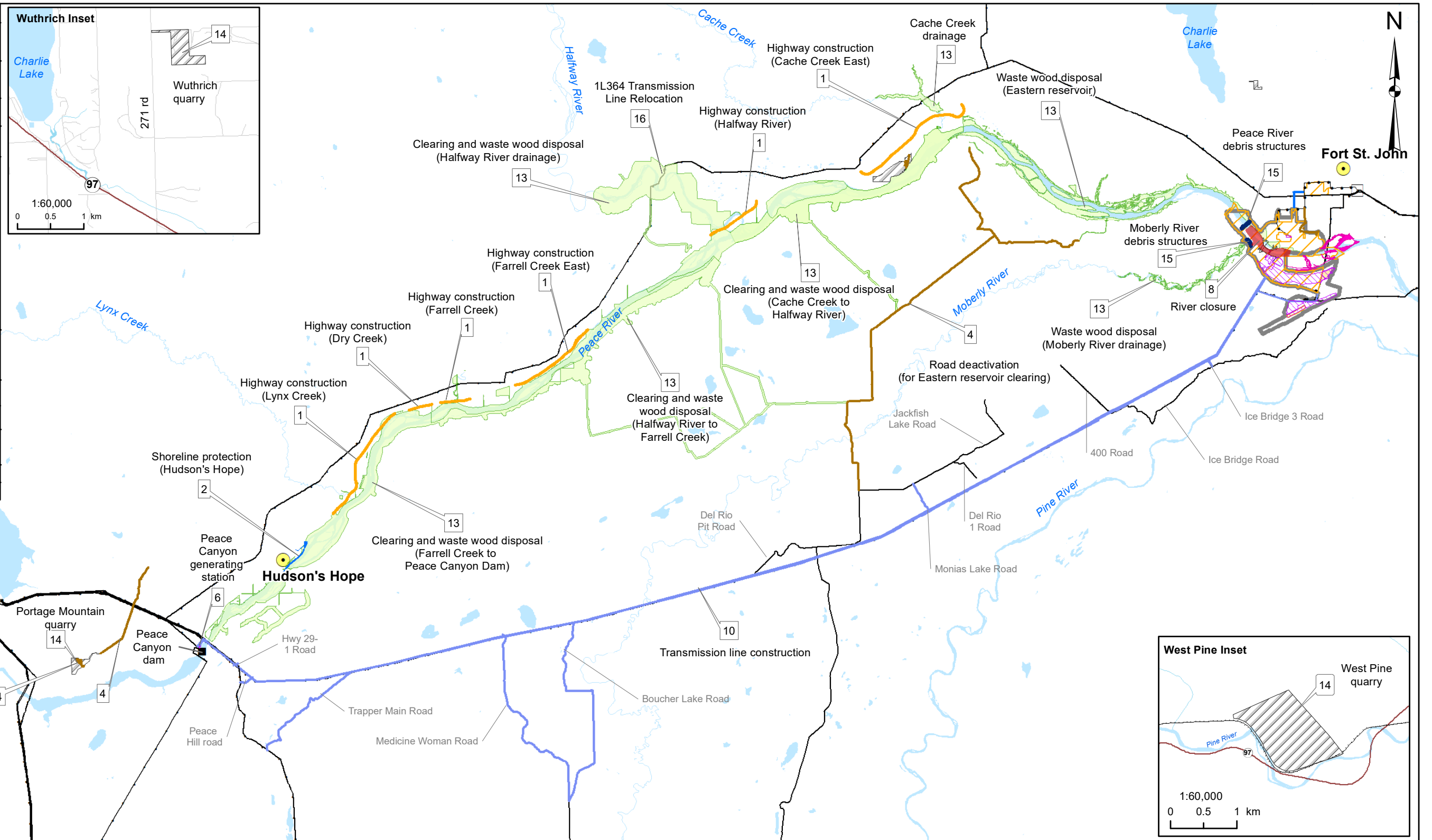
Please do not hesitate to contact me should you wish to arrange a meeting or have any questions about any information described in this letter.

Kindest regards,

A handwritten signature in blue ink, appearing to read "Ken McKenzie", enclosed within a large, loopy oval scribble.

Ken McKenzie

Construction Activity	
1	Highway construction
2	Shoreline Protection
3	Work area (GSS contractor)
4	Road construction and upgrade
5	Main civil works Main civil works general work area
6	Peace Canyon generating station
7	Work area (T&G contractor)
8	River closure
9	Habitat enhancement work (Survey and work area)
10	Transmission line construction, clearing and wood waste disposal
11	Conveyor corridor
12	Wildlife habitat structures, locations to be determined
13	Clearing and wood waste disposal
14	Wuthrich, West Pine, Portage Mountain quarries and Peace View borrow area
15	Debris structures
16	1L364 Transmission Line Relocation



Map Notes:  
 1. Datum: NAD83  
 2. Projection: UTM Zone 10N  
 3. Base Data: Province of B.C.

The construction activities presented in this map are indicative only and may change as a result of procurement and project planning advancements.

1:250,000      0      10 km

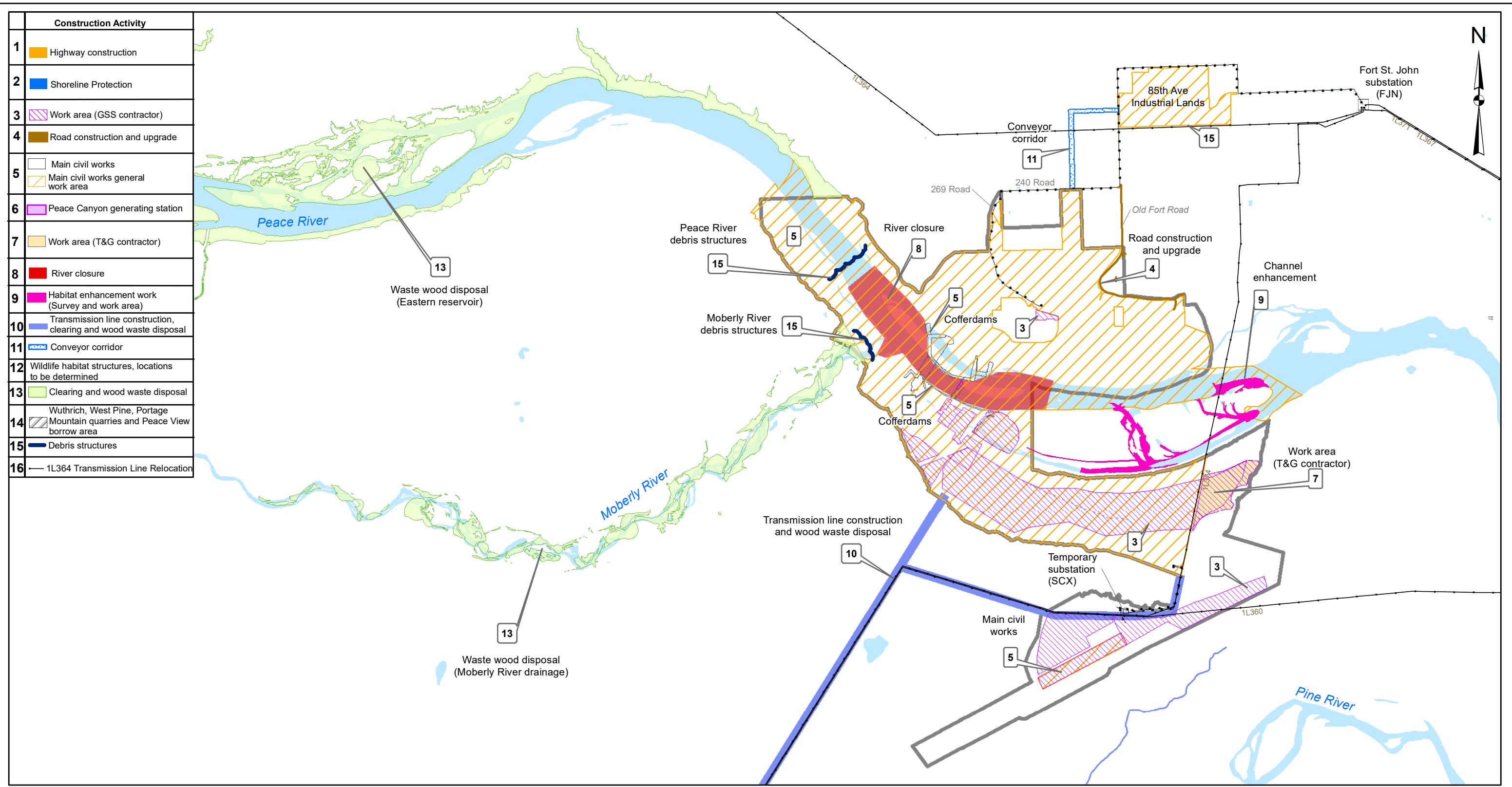
**BC Hydro**

**Construction Activities  
July - September 2021**

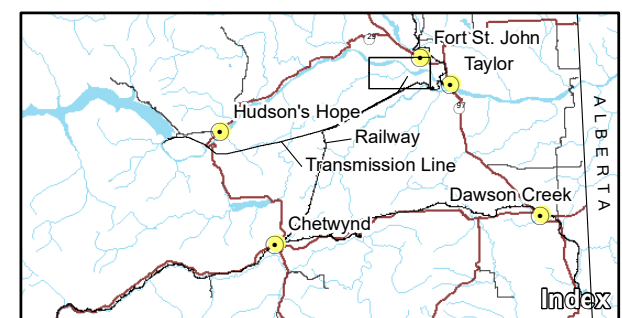
Date	May. 12, 2021	DWG NO	1016-N11-01120-1	R 0
------	---------------	--------	------------------	-----

Path: X:\ArcGISProjects\First Nations\Construction\_Activities\_1016\_N11-01120-1.mxd





Construction Activity	
1	Highway construction
2	Shoreline Protection
3	Work area (GSS contractor)
4	Road construction and upgrade
5	Main civil works Main civil works general work area
6	Peace Canyon generating station
7	Work area (T&G contractor)
8	River closure
9	Habitat enhancement work (Survey and work area)
10	Transmission line construction, clearing and wood waste disposal
11	Conveyor corridor
12	Wildlife habitat structures, locations to be determined
13	Clearing and wood waste disposal
14	Wuthrich, West Pine, Portage Mountain quarries and Peace View borrow area
15	Debris structures
16	1L364 Transmission Line Relocation



Map Notes:  
 1. Datum: NAD83  
 2. Projection: UTM Zone 10N  
 3. Base Data: Province of B.C.

The construction activities presented in this map are indicative only and may change as a result of procurement and project planning advancements.

1:50,000 0 2 km

**BC Hydro**

**Construction Activities  
July - September 2021**

Date	May. 12, 2021	DWG NO	1016-N11-01120-2	R 0
------	---------------	--------	------------------	-----

Construction of the Site C Clean Energy Project is subject to required regulatory and permitting approvals.

Path: X:\ArcGISProjects\First Nations\Construction\_Activities\_1016\_N11-01120-2.mxd