

Ken McKenzie
Executive Vice President
Site C Clean Energy Project
P.O. Box 49260
Vancouver, B.C. V7X 1V5

March 9, 2019

Re: Notice of Site C Construction Activities: April – June 2020

As part of our engagement activities, we provide regular updates and information on construction activities. This letter describes the work planned from April 1 to June 30, 2020.

For the upcoming period, construction at Site C will focus on:

- Progression of earthworks at the dam site and concrete lining and finishing of the two diversion tunnels
- Construction of the Site C substation
- Construction of powerhouse and spillway
- Maintenance of access roads connecting to the transmission line corridor
- Transmission line construction including road maintenance, site preparation, helical pile foundation installation, tower assembly and erection, and conductor stringing
- Highway 29 construction: grading and paving work at Cache Creek West; the embankment portion of Cache Creek East; the road and bridge at Halfway River; and an in-river embankment for Lynx Creek East
- Portage Mountain Quarry operations and improvements to access roads
- Clearing, road maintenance and road construction in areas of the future reservoir
- Habitat construction and installation
- Site security gate improvements
- Possible archaeological data recovery and investigation on Highway 29, along access roads to the future reservoir, and within the future reservoir area
- Clearing activities, including burning, vegetation removal and log hauling, in the middle and eastern reservoir areas

For all activities described in this letter, the [necessary approvals](#) will have been obtained before work begins. Geotechnical site investigations, air quality monitoring, heritage and other field studies are ongoing. We will continue to provide [annual field study notices](#) of these activities.

For the safety of the public and workers, please use caution when hunting, shooting, or setting traps in the Site C project area.

Dam site

- **Access roads:** Crews will continue to maintain dam site access roads and existing south bank resource roads, including petroleum development roads. Site security gate enhancements will occur.
- **Main civil works:** Construction activities will continue. This includes:
 - Excavation and material relocation on the north and south banks for the core trenches and dam foundations
 - Construction of the south bank drainage tunnel
 - Construction of the diversion tunnels and diversion intake structures including gate guides
 - In-river work and dredging
 - Concrete batching
 - Riprap placement
 - Temporary upstream fishway construction
 - Temporary debris boom anchor installation and access road construction
 - Earthfill dam preparation and other civil works
 - Shipments of aggregate and rip rap to site
- **Generating station and spillways (GSS):**
 - Concrete will continue to be placed for the powerhouse intake areas
 - Installation of the main service bay roof waterproofing will continue
 - Sections of the steel penstocks will continue to be delivered to site, where they will be assembled and encased in concrete on the intakes
 - Construction of spillway stilling basin slab will continue
 - Installation of penstock sections at Unit 1, 2 and 3 will continue
- **Turbines and generators:** The turbines and generators contractor will continue to mobilize crews and equipment to their work area on the south bank. The contractor will move material to the dam site by rail or road. They will assemble equipment in their on-site manufacturing facility until installation in the powerhouse, which is expected to begin in mid-2020. Some turbine components are expected to be delivered to Area 27.
- **Site C substation:** The substation contractor will continue with the assembly, installation and testing of substation equipment.

Public roads and highways

- **Highway 29**
 - **Cache Creek West:** The contractor will remobilize and complete work at Cache Creek West
 - **Cache Creek East:** Construction will continue on the embankment
 - **Lynx Creek:** Construction will continue on the embankment at Lynx Creek East
 - **Halfway River:** Construction will continue on the road and bridge

Peace River/reservoir

- **In-river debris management systems:** Debris management structures will be installed on the Moberly River and the Peace River
- **Fish habitat enhancement project:**
 - Surveying work may take place at the downstream fish habitat enhancements
 - Field investigations for shoreline contouring near Hudson's Hope will occur
- **Wildlife program:** Installation of snake hibernacula, eagle nest platforms, fisher den boxes and bat structures may take place. Monitoring of fisher den boxes and bat boxes will continue. Unoccupied eagles' nests may be removed, in advance of river diversion.
- **Archaeology:** Possible archaeological data recovery and investigation on Highway 29, along access roads to the future reservoir, within the future reservoir area, or elsewhere on the project.
- **Reservoir clearing:**
 - Clearing activities and road construction will occur in the following areas:
 - South bank of the eastern reservoir
 - Middle reservoir between Cache Creek and Halfway River
 - Waste wood management: When conditions allow, waste wood may be burned in the following areas:
 - North and south banks of the eastern reservoir
 - Middle reservoir between Cache Creek and Halfway River
 - Moberly River and Cache Creek drainage areas
 - Merchantable trees will be transported to local mills
 - Road maintenance may occur on existing roads in the reservoir area

Hudson's Hope shoreline protection

Archaeological studies may occur.

Transmission works

- **Access road maintenance:** Road maintenance on access roads will occur, to provide safe access to the transmission line right-of-way.
- **Transmission line construction:** Foundations and towers are being assembled and installed. Conductor will be strung. Helicopters will be used.
- **Investigations for relocation of transmission line crossing at Halfway River:** Geotechnical investigations will occur for the relocation of an existing transmission line that crosses the Halfway River.
- **Transmission line construction:** Two new 138kV transmission lines may be constructed for connection to the Site C substation.

Production and transport of materials

- **Wuthrich Quarry and West Pine Quarry:** Riprap will be produced and hauled from West Pine Quarry along Highway 29 for highway construction.

- **Portage Mountain Quarry:** Operations will continue at Portage Mountain Quarry. This includes blasting and producing riprap. Access roads will continue to be upgraded. Clearing will begin for a stockpile area on the corner of 400 Road and Canyon Drive. Riprap and other quarry products will be transported to project construction sites.
- **85th Avenue Industrial Lands:** Work will continue at the Industrial Lands. This includes the preparation of offices, a parking lot, and laydown/stockpile areas. Excavation will begin.
- **Conveyor belt system:** Materials may be transported from the 85th Avenue Industrial Lands to the dam site.

Environmental Assessment Certificate

Environmental Assessment Certificate #E14-02 (EAC) for the project consists of Schedule A, the project description, and Schedule B, the conditions under which the project must be constructed and operated. If BC Hydro wishes to make a change to either Schedule A or Schedule B of the EAC, we are required to submit a written request to the Environmental Assessment Office, which then consults with regulatory agencies, Indigenous groups and/or the public on the request and issues a written decision.

To date, we have requested and been granted six amendments to the EAC. These are:

- Amendment 1 – regarding design changes to the generating station and spillway
- Amendment 2 – regarding design changes to the Halfway River Bridge within the Halfway River Highway 29 realignment
- Amendment 3 – regarding the use of West Pine Quarry, in addition to the already approved Portage Mountain Quarry, as a source of quarry and excavated material for the construction of the Highway 29 realignment, Hudson's Hope shoreline protection, and areas along the reservoir requiring protection during reservoir filling
- Amendment 4 – regarding the selective use of mechanical clearing in riparian zones during reservoir clearing when it is unsafe to undertake manual clearing
- Amendment 5 – regarding a change in the alignment of Highway 29 at Cache Creek
- Amendment 6 – regarding the expansion of the worker accommodation camp within the dam site area.

BC Hydro has applied for three additional amendments regarding proposed revisions to the Highway 29 crossing designs at Farrell Creek, Dry Creek and Lynx Creek. Decisions on these amendment requests are anticipated in May 2020.

Water Licences and Leaves to Commence Construction

BC Hydro holds Water Licences for the diversion and use of water, the storage of water, and for the temporary and permanent fish passage facilities. During the course of construction, we will apply for a series of Leaves to Commence Construction (LCCs) under the Water Licences in order to construct particular project works or components of project works. Construction-related activities under the LCCs are also independently reviewed by the Independent Engineer and the Independent Environmental Monitor as required by the Water Licences.

To date, BC Hydro has obtained LCCs for:

- Initial works
- Relocated Surplus Excavation Material (RSEM) storage areas

- North and south bank excavations
- South bank stage 1 cofferdam
- Clearing of the eastern reservoir
- North bank cofferdams and diversion tunnel works
- Roller-compacted concrete (RCC) buttress foundation preparation and RCC placement
- Geotechnical investigations for the Hudson's Hope Shoreline Protection and Halfway River debris boom
- Earthfill dam excavation, foundation preparation, fill placement and approach channel foundation preparation and placement
- Generating station civil works and spillway civil works
- Construction of the temporary fish passage facility
- Stage 2 cofferdams and river diversion
- Water licences for temporary and permanent fish passage facilities
- Construction of the temporary fish passage facility
- Middle reservoir clearing

BC Hydro plans to submit LCC applications related to turbine, generator and powerhouse completion works, and for Hudson's Hope berm construction, in the spring of 2020.

Notice of completed activities

The following work, described in previous notifications, is complete or is anticipated to be complete by the date of issuance of this letter:

- South bank downstream fish habitat enhancements

What to expect

During this time, the following can be expected:

- [Permanent navigational restrictions](#): Boaters will no longer have access to the Moberly River and the Peace River, near the dam site, once debris structures have been installed. Public safety signs and beacons have been installed on both banks of the Peace River, on both sides of the dam site, to mark the active construction area.
- There will be project-related traffic on public roads leading to the dam site, transmission corridor, reservoir and Highway 29, as we continue to haul materials, equipment, rock, and timber. This will include increased industrial traffic on resource roads and public roads from Chetwynd leading to the site on the south bank.
- Day, night and weekend shifts are anticipated for the duration of the project.
- Traffic control will be intermittently in place for construction and investigation activities along Highway 29. This may cause minor traffic delays. Visit drivebc.ca for the latest traffic updates.
- Noise will occur near the construction areas.
- Noise and vibration will result from blasting and other works in the quarries. Hauling may occur at night.

- There will be construction occurring around the Peace River at the dam site.
- Public safety signs and beacons have been installed on both banks of the Peace River, on both sides of the dam site, to mark the active construction area.
- We are monitoring air quality in the Site C project area. This data is being added to the Ministry of Environment's [B.C. Air Quality Monitoring Data](#). The Ministry uses this data to report on air quality trends. In the event of poor air quality, the Ministry will release air quality advisories through a notification list. This notification list currently includes the regional media, various public and private sector offices, as well as members of the public. If you are interested in being part of this notification list, please email sitec@bchydro.com.

Learn more

BC Hydro is committed to providing you with information about Site C construction activities and has established several ways that you can learn more about the project.

The [Site C website](#) is the main source of important project information, such as:

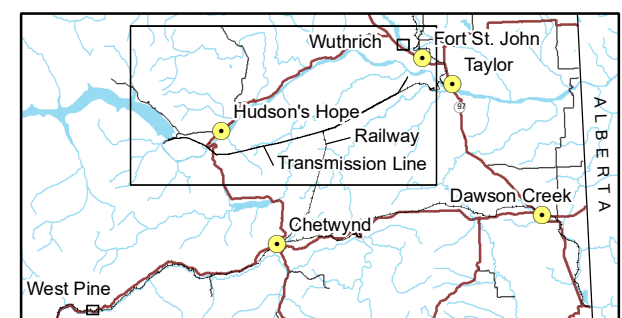
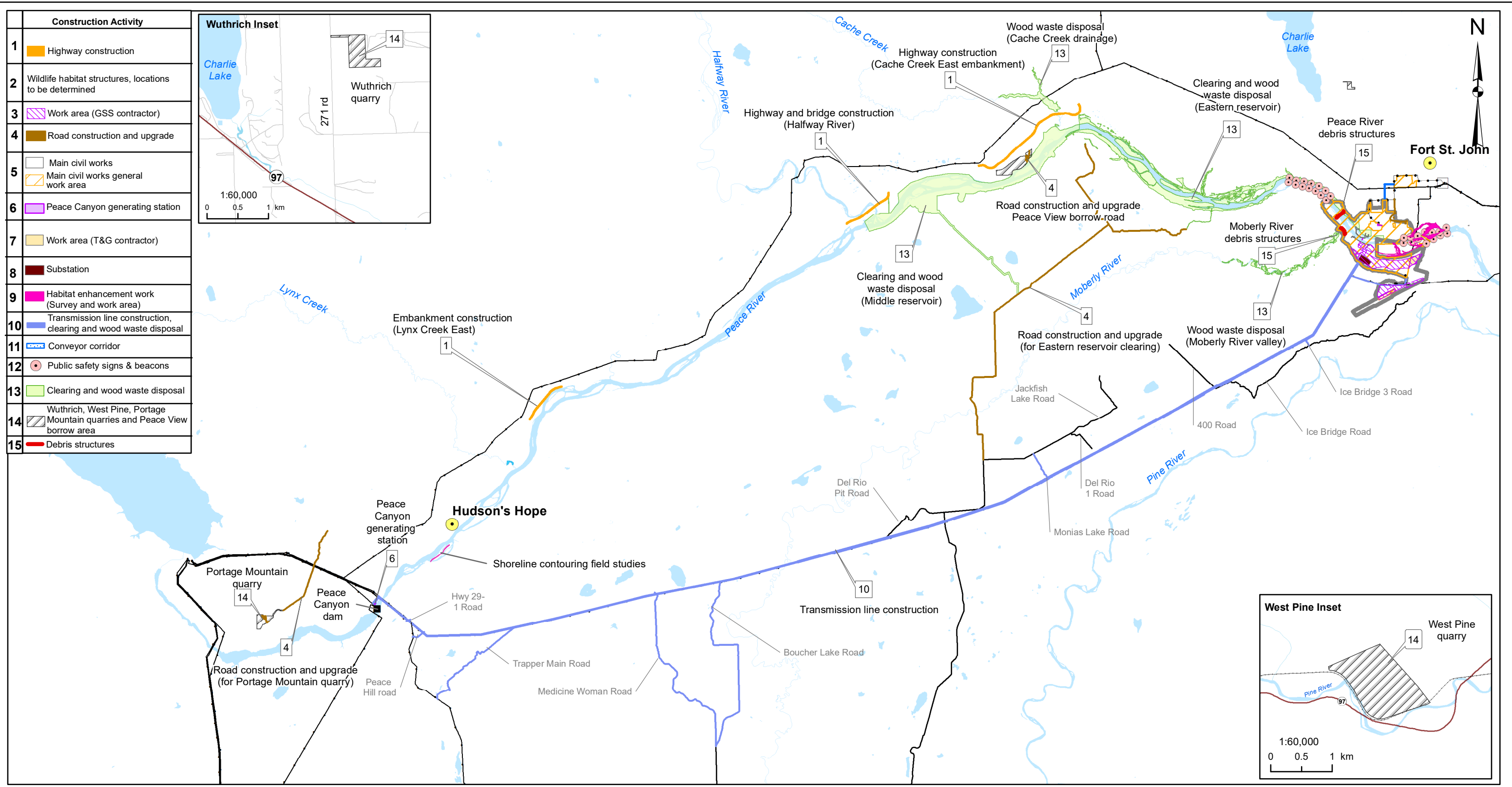
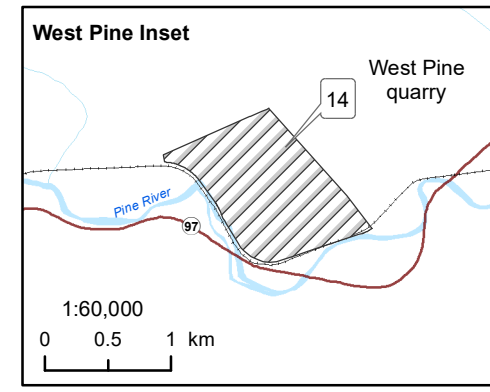
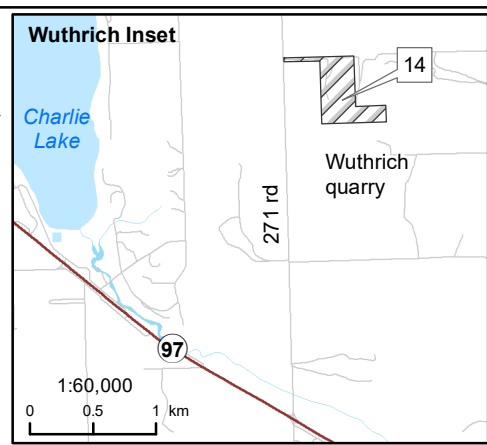
- News and information about the project
- Planned construction activities and a general project schedule
- Information about job and business opportunities
- Information for regional and Indigenous communities
- A document library and other information pages, containing:
 - Information sheets
 - Mitigation and monitoring plans
 - Annual reports
 - Permits and authorizations received from regulatory agencies
 - Reports from the environmental assessment, and consultation and engagement activities
 - Project planning and evaluation reports
 - Environment and socio-economic reports
 - Engineering and technical reports
 - Employment statistics
 - Quarterly Progress Reports to the BCUC

Kindest regards,

A handwritten signature in blue ink, appearing to read "Ken McKenzie", enclosed within a blue oval scribble.

Ken McKenzie

Construction Activity	
1	Highway construction
2	Wildlife habitat structures, locations to be determined
3	Work area (GSS contractor)
4	Road construction and upgrade
5	Main civil works Main civil works general work area
6	Peace Canyon generating station
7	Work area (T&G contractor)
8	Substation
9	Habitat enhancement work (Survey and work area)
10	Transmission line construction, clearing and wood waste disposal
11	Conveyor corridor
12	Public safety signs & beacons
13	Clearing and wood waste disposal
14	Wuthrich, West Pine, Portage Mountain quarries and Peace View borrow area
15	Debris structures



Map Notes:
 1. Datum: NAD83
 2. Projection: UTM Zone 10N
 3. Base Data: Province of B.C.

The construction activities presented in this map are indicative only and may change as a result of procurement and project planning advancements.

1:250,000 0 10 km

BC Hydro

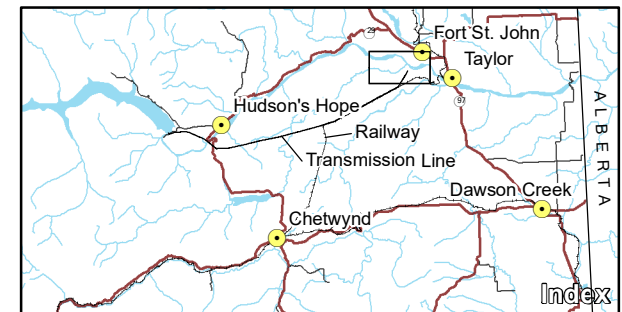
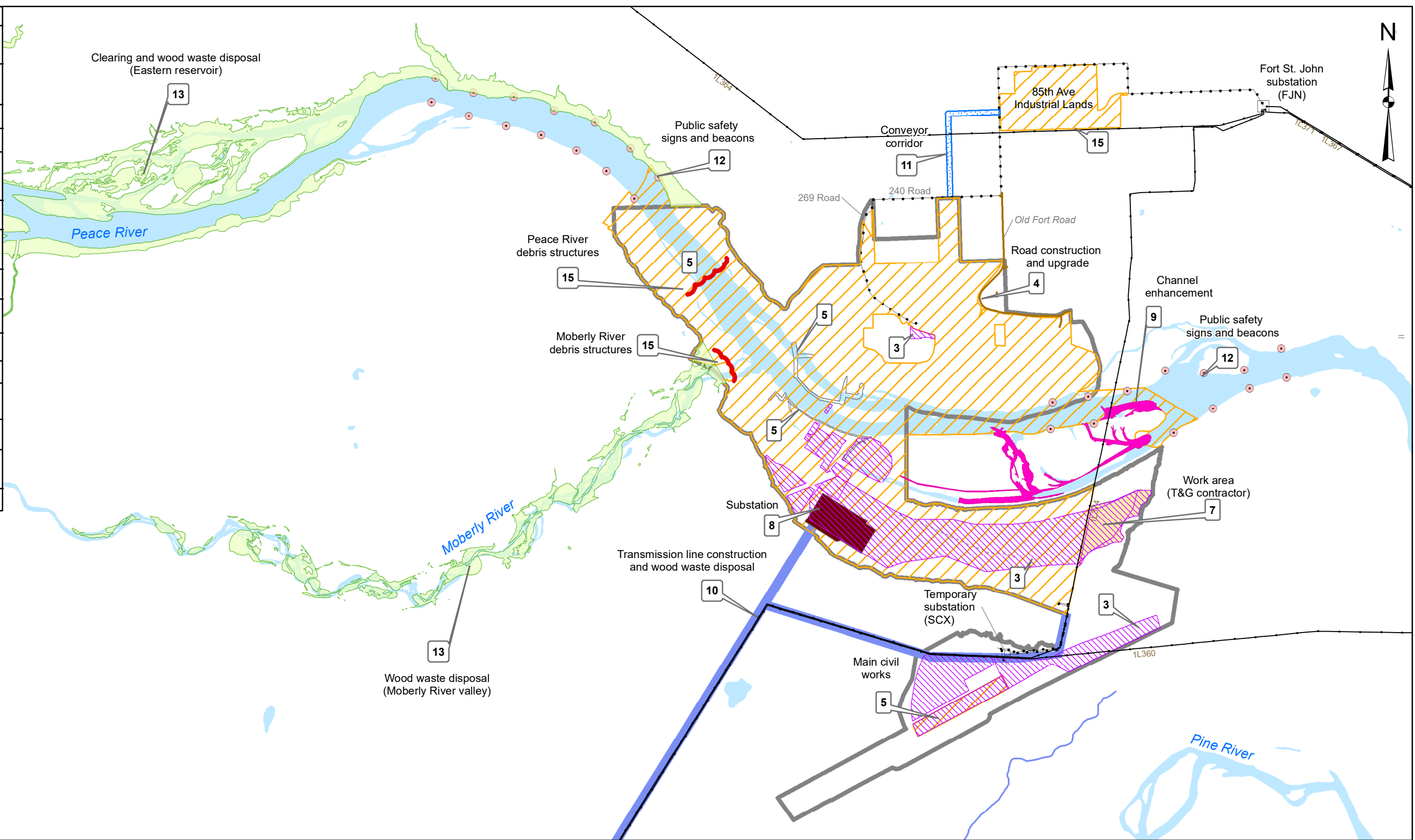
**Construction Activities
April - June 2020**

Date	Mar. 6, 2020	DWG NO	1016-N11-00778-1	R 0
------	--------------	--------	------------------	-----

Path: X:\Acad\Projects\First_Nations\Construction_Activities_1016_N11-00778-1.mxd

Construction of the Site C Clean Energy Project is subject to required regulatory and permitting approvals.

Construction Activity	
1	Highway construction
2	Wildlife habitat structures, locations to be determined
3	Work area (GSS contractor)
4	Road construction and upgrade
5	Main civil works Main civil works general work area
6	Peace Canyon generating station
7	Work area (T&G contractor)
8	Substation
9	Habitat enhancement work (Survey and work area)
10	Transmission line construction, clearing and wood waste disposal
11	Conveyor corridor
12	Public safety signs & beacons
13	Clearing and wood waste disposal
14	Wuthrich, West Pine, Portage Mountain quarries and Peace View borrow area
15	Debris structures



Map Notes:
 1. Datum: NAD83
 2. Projection: UTM Zone 10N
 3. Base Data: Province of B.C.

The construction activities presented in this map are indicative only and may change as a result of procurement and project planning advancements.

1:50,000 0 2 km

BC Hydro

**Construction Activities
April - June 2020**

Date	Mar. 6, 2020	DWG NO	1016-N11-00778-2	R 0
------	--------------	--------	------------------	-----

Path: X:\AcGIS\Projects\First Nations\Construction_Activities_1016_N11-00778-2.mxd