

May 31, 2019

Re: Site C Construction Activities: July to September 2019

As part of our engagement with communities, BC Hydro provides regular updates and information on construction activities. This letter describes the work planned from July 1 to September 30, 2019.

For the upcoming period, construction will continue to focus on:

- Progression of earthworks at the dam site and excavation of the two diversion tunnels.
- Construction of the Site C substation.
- Upgrades and maintenance for access roads connecting to the transmission line corridor.
- Transmission line construction including site preparation, helical pile and concrete foundations, and tower assembly and installation.
- Expansion of the outdoor switchyard and indoor gas-insulated switchgear at Peace Canyon.
- Construction of the Highway 29 realignment at Cache Creek West. Construction may occur at Halfway River and the embankment portion of Cache Creek East.
- Archaeological data recovery along the future alignment and aggregate source areas at Halfway River and Cache Creek East.
- Geotechnical investigations of the western segments of Highway 29 (Farrell Creek, Lynx Creek and Dry Creek).
- Road maintenance and road construction in areas of the future reservoir.
- Archaeological data recovery and investigation along access roads to the new reservoir.
- Clearing activities, including vegetation removal and log hauling, in the middle and eastern reservoir areas and the transmission line corridor.
- Telecommunication equipment upgrades at various telecommunication and substation sites.

For all activities described in this letter, the [necessary approvals](#) will have been obtained before the work begins. Geotechnical site investigations, air quality monitoring, heritage and other field studies are ongoing. BC Hydro will continue to provide [annual field study notices](#) of these activities.

Please use caution when hunting, shooting, or setting traps near the Site C transmission line corridor for the safety of public and workers in the area.

The following construction activities are expected to occur from July 1 to September 30, 2019:

Dam site area

- **Access roads:** Crews will continue to maintain dam site access roads and existing south bank resource roads, including petroleum development roads.
- **Main civil works:** Construction activities will continue. This includes:

- Excavation and material relocation on the north and south banks for the core trenches and dam foundations
- Construction of the south bank drainage tunnel
- Construction of the diversion tunnels and diversion intake structure
- In-river work and dredging
- Aggregate production
- Concrete batching, foundation preparation and construction of the spillway buttress
- Riprap placement
- Temporary upstream fishway construction
- Earthfill dam preparation and other civil works
- Shipments of aggregate and rip rap to site
- Construction of a conveyance system for dam core materials
- **Generating station and spillways (GSS):**
 - Concrete will continue to be placed for the powerhouse intake areas
 - Installation of the main service bay will continue
 - The main parts for the two powerhouse cranes will be delivered and installed in the main service bay
 - Sections of the steel penstocks will continue to be delivered to site, where they will be assembled and encased in concrete on the intakes
- **Turbines and generators:** The turbines and generators contractor will continue to mobilize crews and equipment to their work area on the south bank. The contractor will move material to the dam site by rail or road. They will assemble equipment in their on-site manufacturing facility until installation in the powerhouse, which is expected to begin in mid-2020.
- **Site C substation:** The substation contractor will continue with site preparation works, foundation construction, control building fit out, and the assembly and installation of substation equipment. Concrete and aggregates will be transported to site.
- **Worker accommodation camp upgrade:** An additional capacity of 150 beds will be added to the existing camp facility.

Public roads and highways

- **Highway 29 at Cache Creek West:** Construction will continue on this section of highway. This includes grading, earthworks and drainage.
- **Highway 29 at Cache Creek East:** Archaeological data recovery will begin. Some construction may begin at the embankment.
- **Highway 29 at Halfway River:** Archaeological data recovery will begin.
- **Highway 29 western segments:** Geotechnical investigations will continue at Lynx Creek, Dry Creek, Farrell Creek and Farrell Creek East.

Peace River/reservoir

- **Fish habitat enhancement project:** The habitat enhancement contractor has mobilized to the south bank of the Peace River and will be working through this period.
- **Wetland restoration:** Wetland restoration will occur near Clayhurst. This includes excavation, construction of earthen dams, and installation of water control structures.
- **Wildlife program:** Installation and monitoring of wildlife structures will take place. Unoccupied eagles' nests will be removed, in advance of river diversion.

- **Reservoir clearing:**
 - Clearing and road construction will occur in the eastern and middle reservoir areas, including the south bank, north bank, and Cache Creek to Halfway River areas of the Peace River, and Moberly River area.
 - Road maintenance may occur on existing roads in the reservoir area, including the North Monias and Peace View Borrow roads and portions of Old Hope Road.

Hudson's Hope

- **Site investigations:** Geotechnical studies may occur to support the design of the shoreline protection project.

Transmission works

- **Access road maintenance:** Road maintenance and upgrades to access roads will occur, to provide safe access to the transmission line right-of-way. Work will include erosion and sediment control.
- **Access road construction:** Access roads may be built within portions of the transmission line right-of way from the western part of the Moberly River.
- **Peace Canyon generating station:** Upgrade works within the switchyard building will continue. Work will continue on the outdoor switchyard expansion, including equipment assembly and installation.
- **Equipment upgrades:** Telecommunication equipment will be upgraded at various telecommunication and substation sites.
- **Transmission line construction:** Foundations and towers are being assembled and installed. Geotechnical investigations may continue.
- **Investigations for relocation of transmission line crossing at Halfway River:** Archaeological impact studies and geotechnical investigations will occur for the relocation of an existing transmission line that crosses the Halfway River.
- **Transmission line construction:** Two new 138kV transmission lines will be constructed for connection to the Site C substation.
- **Clearing:** Clearing, vegetation removal and log hauling along the transmission line corridor.

Production and transport of materials

- **Wuthrich Quarry and West Pine Quarry:** Riprap will be produced. Blasting will occur as part of this work. Riprap will be hauled from West Pine Quarry along Highway 29 for highway construction.
- **Portage Mountain Quarry:** Stockpile areas will be developed. Haul roads will be constructed. The remaining access roads to the quarry site will be completed.
- **85th Avenue Industrial Lands:** Work will continue at the Industrial Lands. This includes the preparation of offices, a parking lot, and laydown/stockpile areas. Excavation may begin in this period.
- **Conveyor belt system:** Construction will occur for the temporary conveyor belt system. This will include earthworks and pile driving. Fencing will be installed along the conveyer right-of-way.

Water Licences and Leaves to Commence Construction

BC Hydro holds Water Licences for the diversion and use of water, the storage of water, and for the temporary and permanent fish passage facilities. During the course of construction, we will apply for a series of Leaves to Commence Construction (LCCs) under the Water Licences in order to construct particular project works or components of project works. Construction-related activities under the LCCs are also independently reviewed by the Independent Engineer and the Independent Environmental Monitor as required by the Water Licences.

To date, BC Hydro has obtained LCCs for:

- Initial works
- Relocated Surplus Excavation Material (RSEM) storage areas
- North and south bank excavations
- South bank stage 1 cofferdam
- Clearing of the eastern reservoir
- North bank cofferdams and diversion tunnel works
- Roller-compacted concrete (RCC) buttress foundation preparation and RCC placement
- Geotechnical investigations for the Hudson's Hope Shoreline Protection and Halfway River debris boom
- Earthfill dam excavation, foundation preparation, fill placement and approach channel foundation preparation and placement
- Generating station civil works and spillway civil works
- Construction of the temporary fish passage facility
- Stage 2 cofferdams and river diversion
- Water licences for temporary and permanent fish passage facilities

One LCC application is currently with the Comptroller of Water Rights for review, LCC12 for middle reservoir clearing.

Notice of completed activities

The following work, described in previous notifications, is complete or is anticipated to be complete by the date of issuance of this letter:

- Highway 29 clearing and vegetation removal at Halfway River along proposed alignment and aggregate source areas
- Invasive species rinse station
- Three tower cranes installed in the powerhouse area
- Security infrastructure installed at the dam site

What to expect

During this time period, the following can be expected:

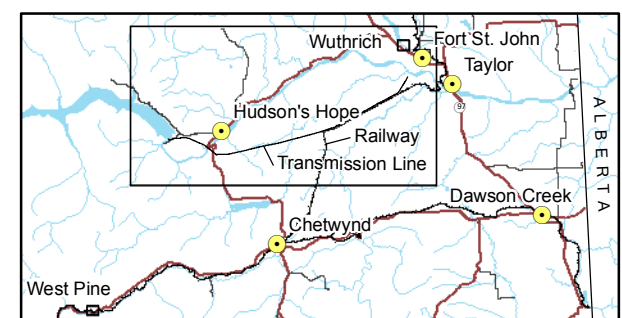
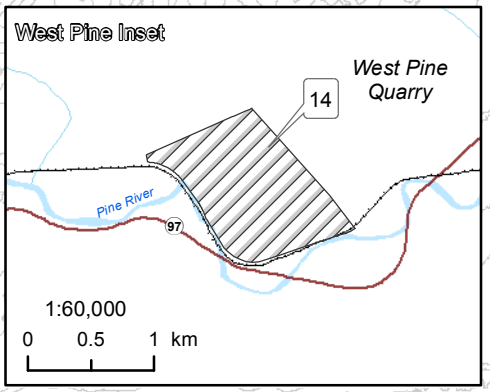
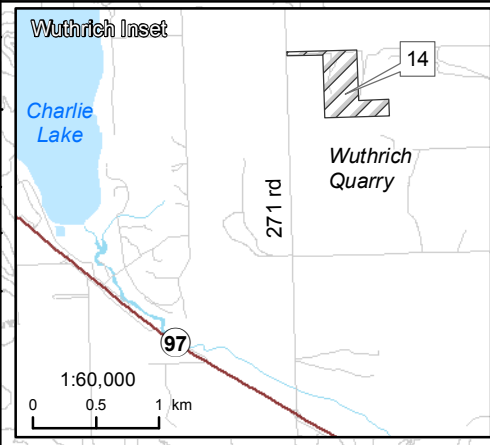
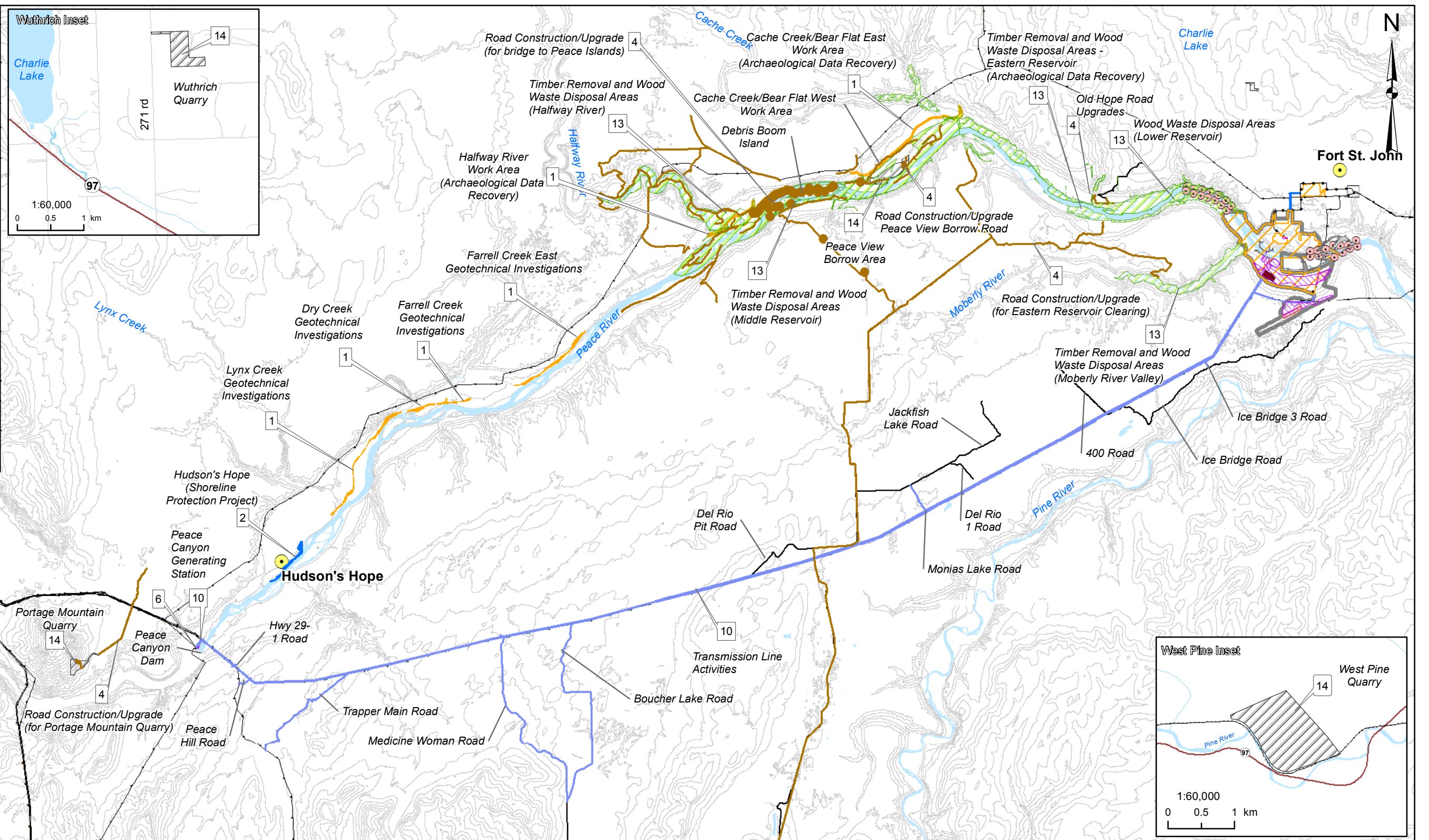
- There will be project-related traffic on public roads leading to the dam site, transmission corridor, reservoir and Highway 29, as we continue to haul materials, equipment, rock, and timber. This will include increased industrial traffic on resource roads and public roads from Chetwynd leading to the site on the south bank.

- Day, night and weekend shifts are anticipated for the duration of the project.
- Traffic control will be intermittently in place for construction and investigation activities along Highway 29. This may cause minor traffic delays. Visit drivebc.ca for the latest traffic updates.
- Noise will occur near the construction areas.
- Noise and vibration will result from blasting and other works in the quarries. Hauling may occur at night.
- There will be construction occurring around the Peace River at the dam site.
- Public safety signs and beacons have been installed on both banks of the Peace River, on both sides of the dam site, to mark the active construction area. Until further notice, boaters will be able to pass through the dam site, but will not have shoreline access in the dam site construction area. A security boat will be monitoring boat traffic.
- We are monitoring air quality in the Site C project area. This data is being added to the Ministry of Environment's [B.C. Air Quality Monitoring Data](#). The Ministry uses this data to report on air quality trends. In the event of poor air quality, the Ministry will release air quality advisories through a notification list. This notification list currently includes the regional media, various public and private sector offices, as well as members of the public. If you are interested in being part of this notification list, please email sitec@bchydro.com.

Learn more

- Visit the [project website](#)
- Call the toll-free project line: 1-877-217-0777
- Email us: sitec@bchydro.com
- Send an [enquiry or feedback online](#)

Construction Activity	
1	Highway 29 Realignment Hwy 29 Realignment Work Areas
2	Hudson's Hope (Shoreline Protection Project)
3	Work Area (GSS Contractor)
4	Road Construction/Upgrade
5	Main Civil Works Main Civil Works General Work Area
6	Peace Canyon Generating Station
7	Work Area (T&G Contractor)
8	Substation
9	Channel Enhancement Work (Survey and Work Area)
10	Transmission Line Activities
11	Conveyor Corridor
12	Public Safety Signs & Beacons
13	Timber Removal and Wood Waste Disposal Areas
14	Wuthrich, West Pine, Portage Mountain Quarries and Peace View Borrow Area



Map Notes:
1. Datum: NAD83
2. Projection: UTM Zone 10N
3. Base Data: Province of B.C.

The construction activities presented in this map are indicative only and may change as a result of procurement and project planning advancements.

1:250,000 0 10 km

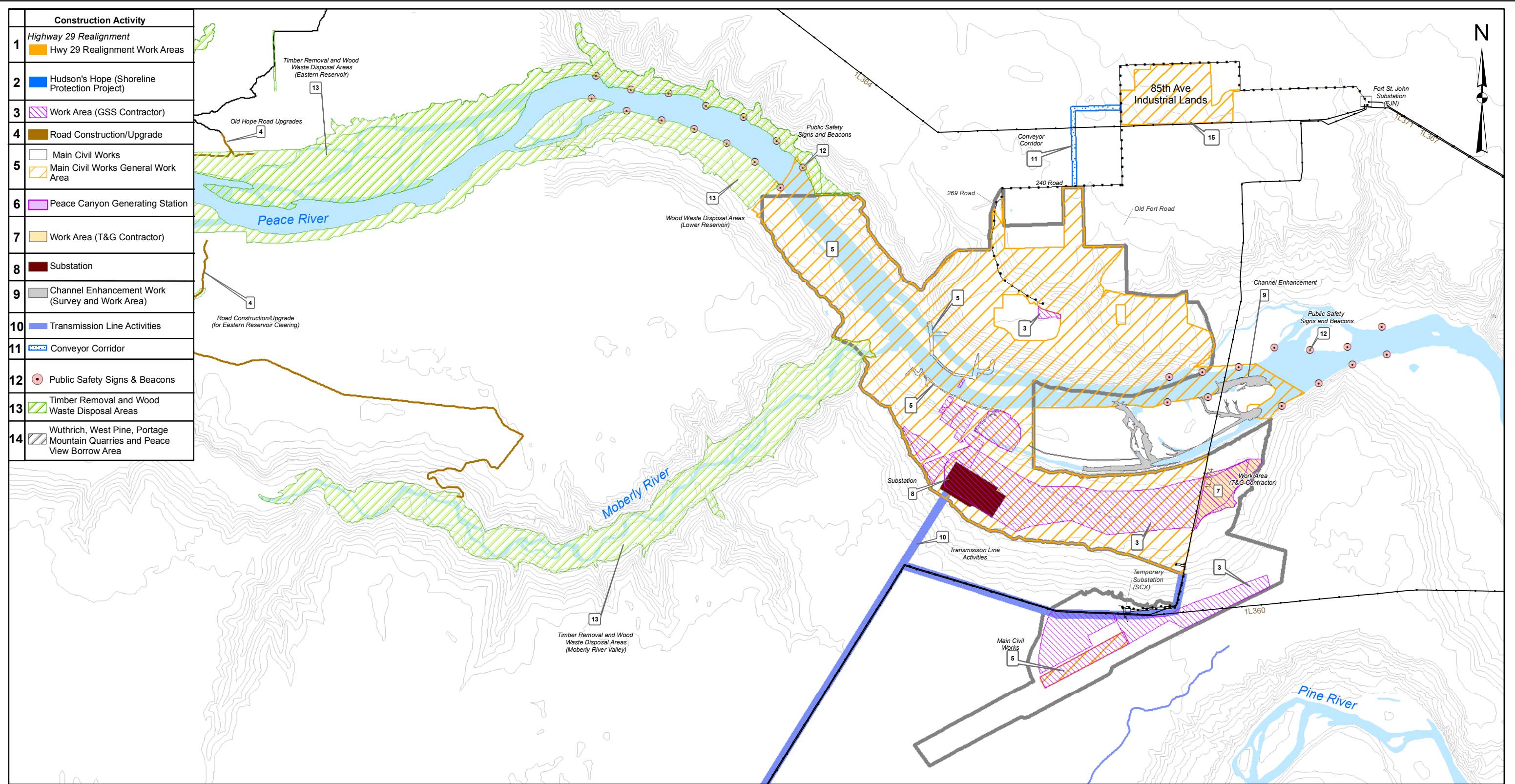
BC Hydro

Construction Activities July - September 2019

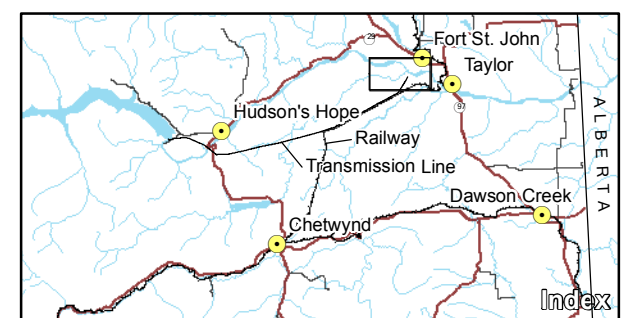
Date	May 29, 2019	DWG NO	1016-N11-00540-1	R 0
------	--------------	--------	------------------	-----

Construction of the Site C Clean Energy Project is subject to required regulatory and permitting approvals.

Path: X:\AcGIS\Projects\First Nations\Construction_Activities_1016_N11-00540-1A.mxd



Construction Activity	
1	Highway 29 Realignment Hwy 29 Realignment Work Areas
2	Hudson's Hope (Shoreline Protection Project)
3	Work Area (GSS Contractor)
4	Road Construction/Upgrade
5	Main Civil Works Main Civil Works General Work Area
6	Peace Canyon Generating Station
7	Work Area (T&G Contractor)
8	Substation
9	Channel Enhancement Work (Survey and Work Area)
10	Transmission Line Activities
11	Conveyor Corridor
12	Public Safety Signs & Beacons
13	Timber Removal and Wood Waste Disposal Areas
14	Wuthrich, West Pine, Portage Mountain Quarries and Peace View Borrow Area



Map Notes:
 1. Datum: NAD83
 2. Projection: UTM Zone 10N
 3. Base Data: Province of B.C.

The construction activities presented in this map are indicative only and may change as a result of procurement and project planning advancements.

1:50,000 0 2 km

BC Hydro

**Construction Activities
July - September 2019**

Date	May 29, 2019	DWG NO	1016-N11-00540-2	R 0
------	--------------	--------	------------------	-----

Path: X:\AcGIS\Projects\First Nations\Construction_Activities_1016_N11-00540-2A.mxd

© BC Hydro 2019 - all rights reserved. This map is for information purposes only and accuracy is not guaranteed.

Construction of the Site C Clean Energy Project is subject to required regulatory and permitting approvals.