



Report Title: Site C Environmental Impact Statement

Issuer: BC Hydro and Power Authority, System Engineering Division

Date: July 1980

NOTE TO READER:

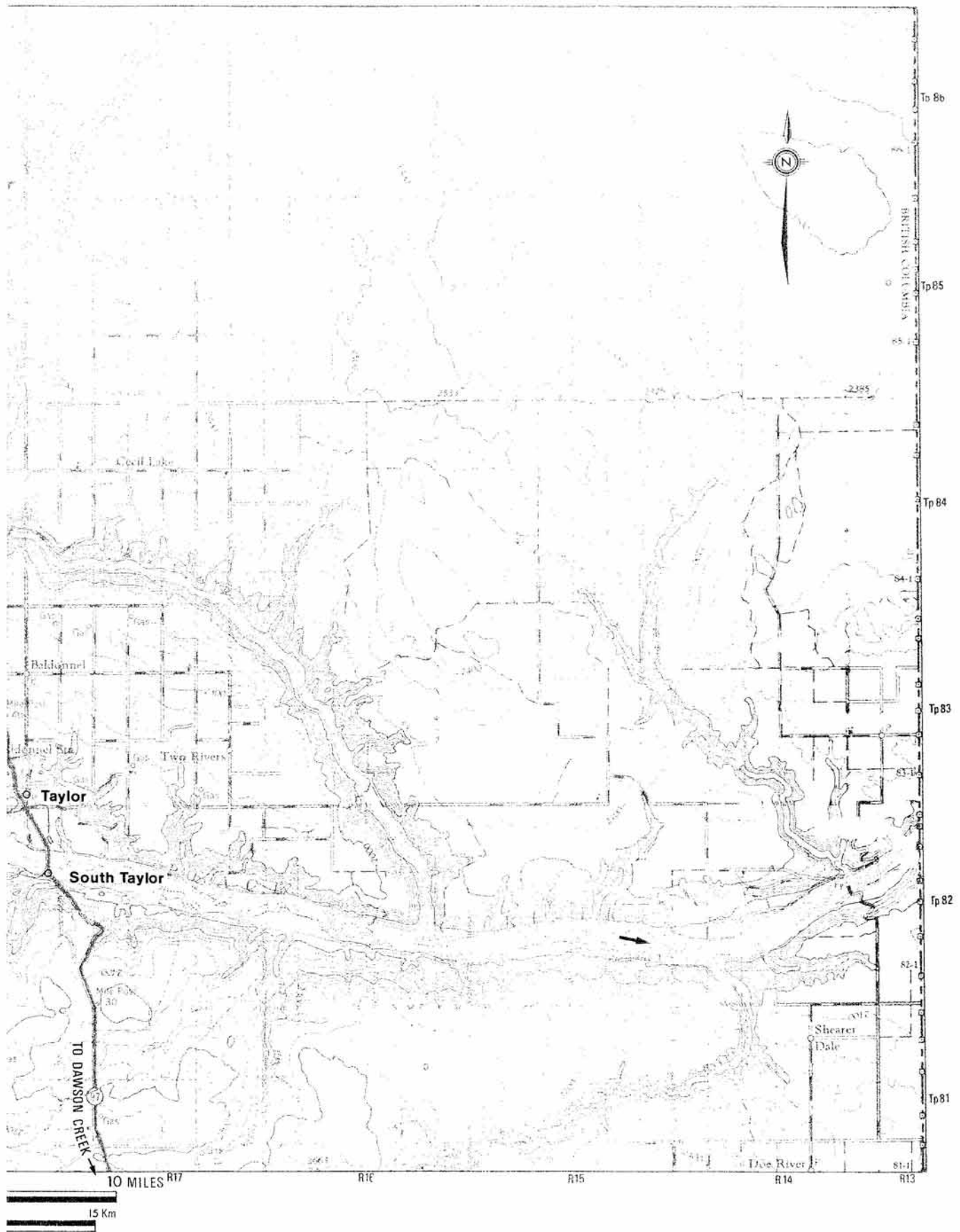
THE FOLLOWING REPORT IS MORE THAN TWO DECADES OLD. INFORMATION CONTAINED IN THIS REPORT MAY BE OUT OF DATE AND BC HYDRO MAKES NO STATEMENT ABOUT ITS ACCURACY OR COMPLETENESS. USE OF THIS REPORT AND/OR ITS CONTENTS IS AT THE USER'S OWN RISK.

During Stage 2 of the Site C Project, studies are underway to update many of the historical studies and information known about the project.

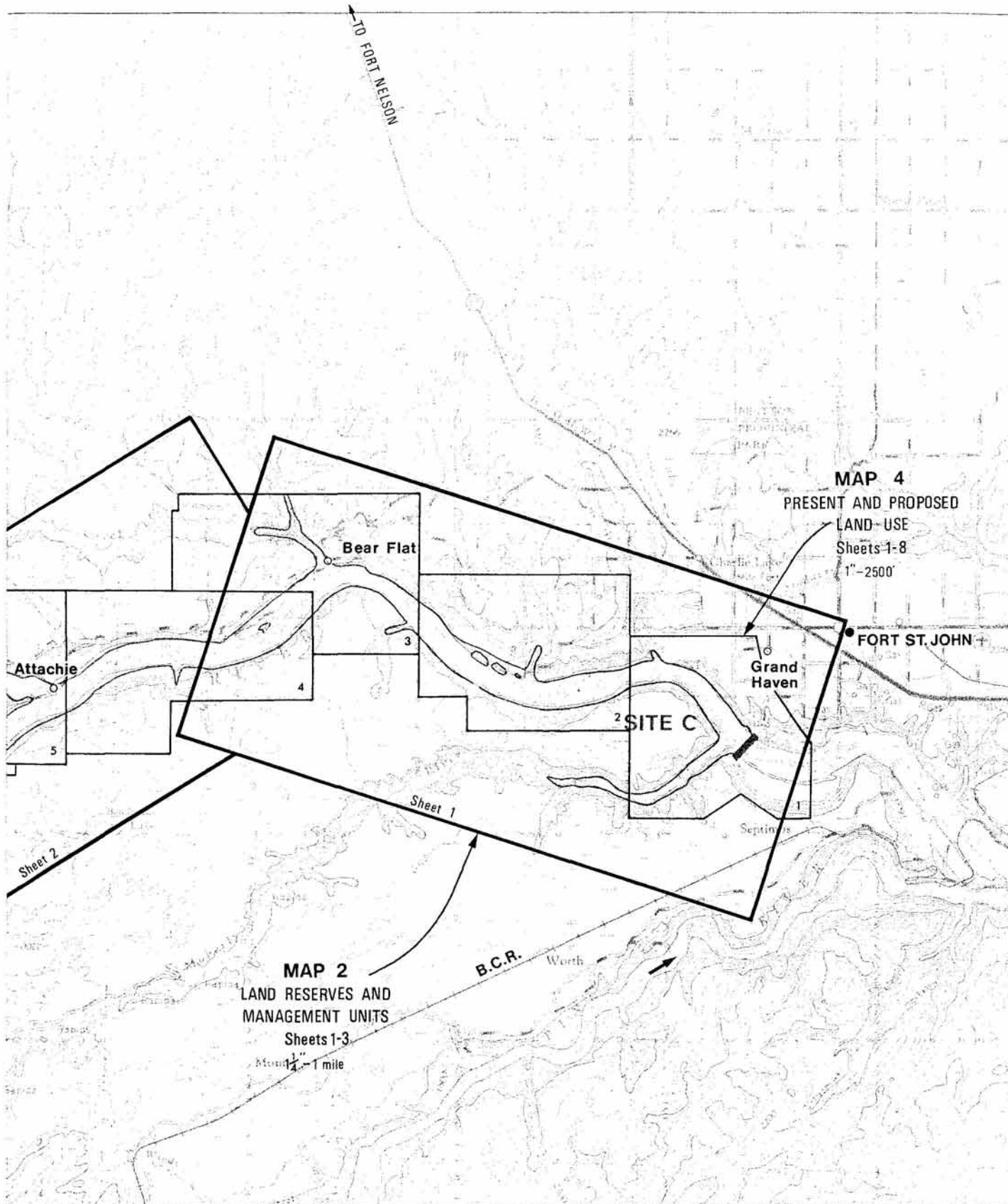
The potential Site C project, as originally conceived, will be updated to reflect current information and to incorporate new ideas brought forward by communities, First Nations, regulatory agencies and stakeholders. Today's approach to Site C will consider environmental concerns, impacts to land, and opportunities for community benefits, and will update design, financial and technical work.

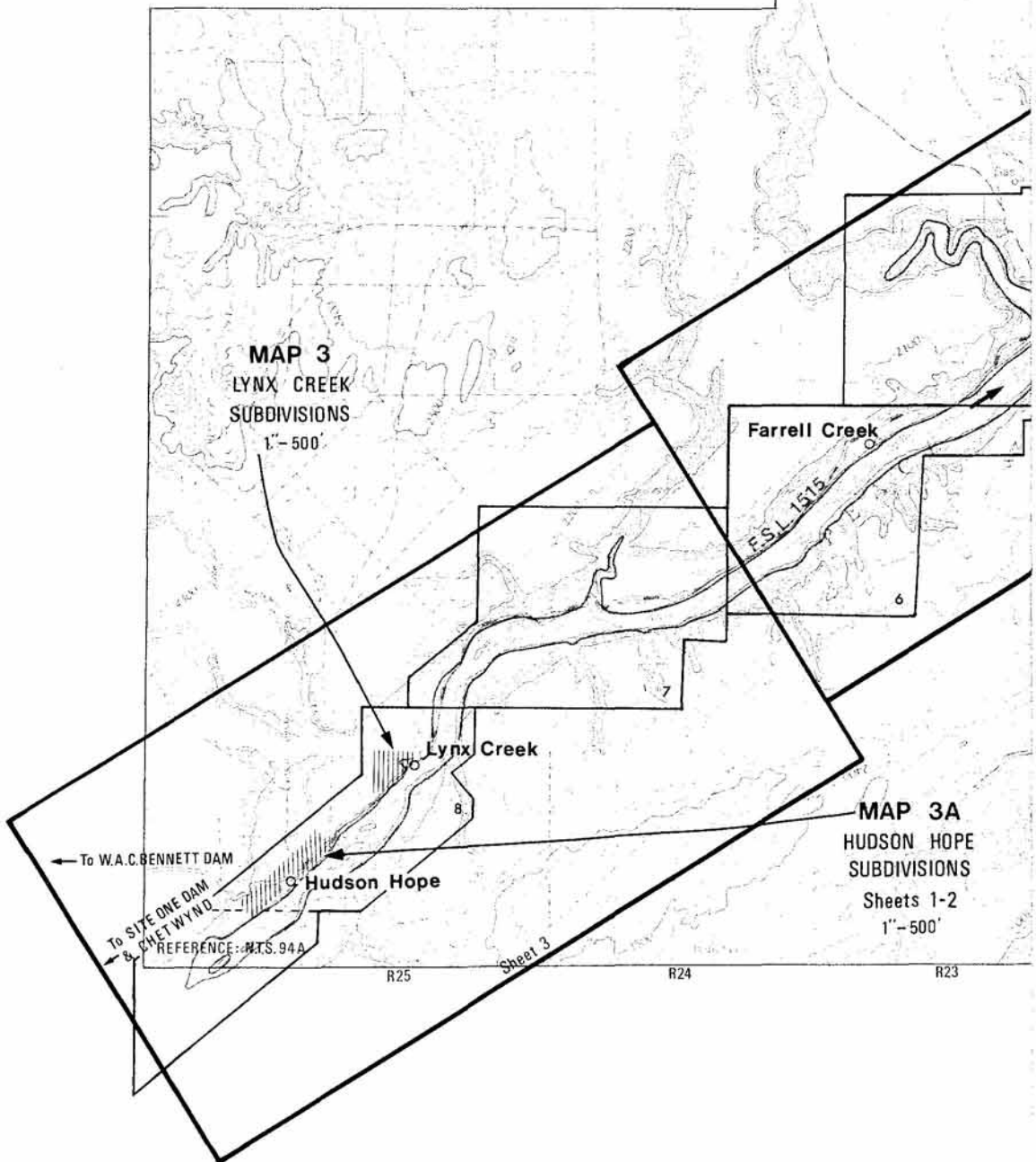
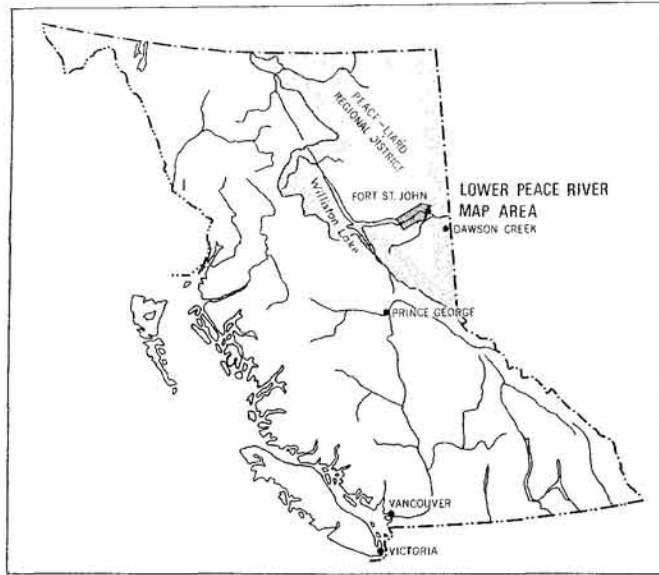
PEACE SITE C PROJECT
ENVIRONMENTAL IMPACT STATEMENT

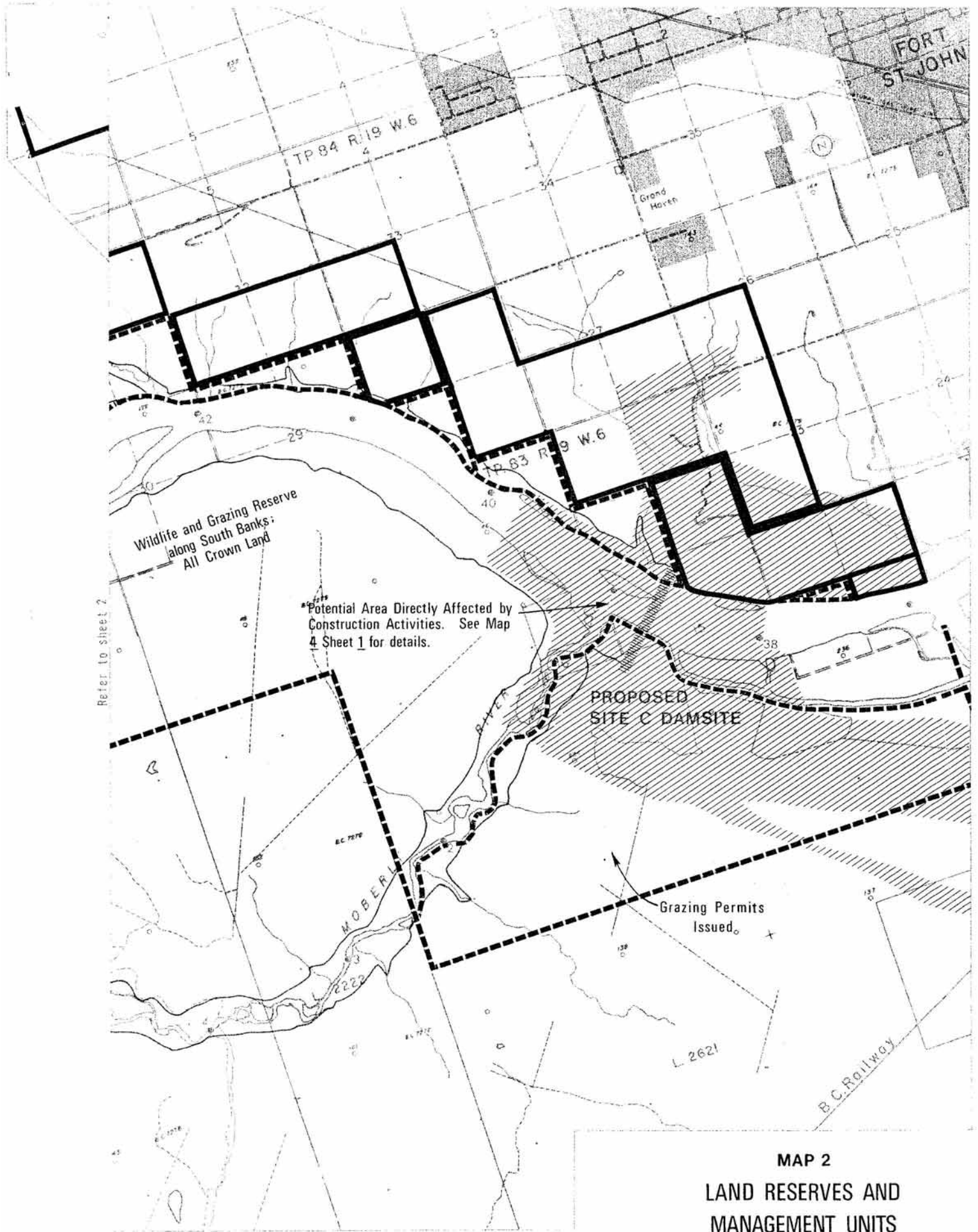
Land Use Maps



MAP 1
KEY TO LAND USE MAPS







Refer to sheet 2

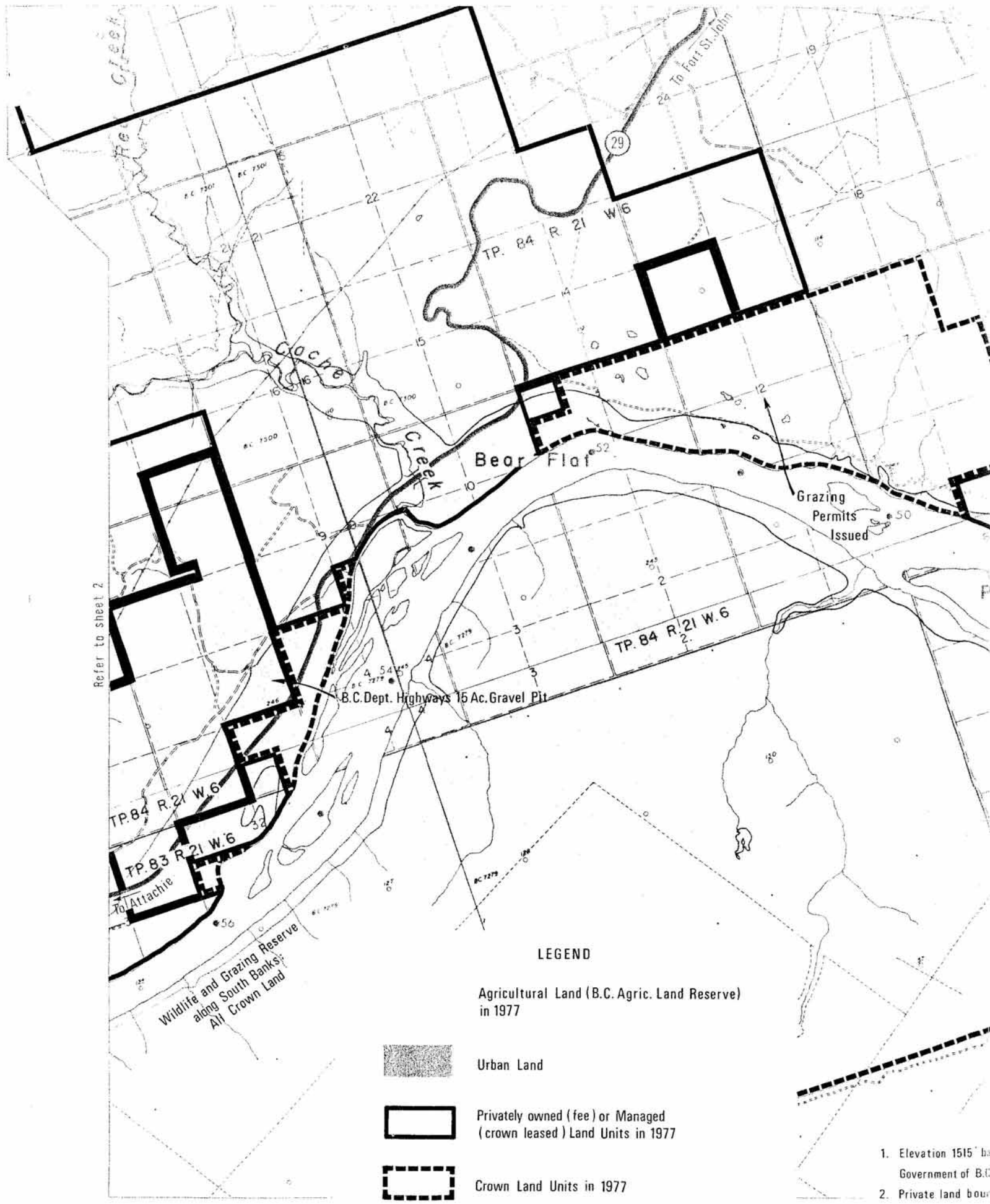
Wildlife and Grazing Reserve
along South Banks;
All Crown Land

Potential Area Directly Affected by
Construction Activities. See Map
4 Sheet 1 for details.

PROPOSED
SITE C DAMSITE

Grazing Permits
Issued.

MAP 2
LAND RESERVES AND
MANAGEMENT UNITS
Sheet 1



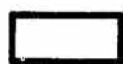
Refer to sheet 2

LEGEND

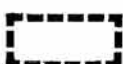
Agricultural Land (B.C. Agric. Land Reserve) in 1977



Urban Land

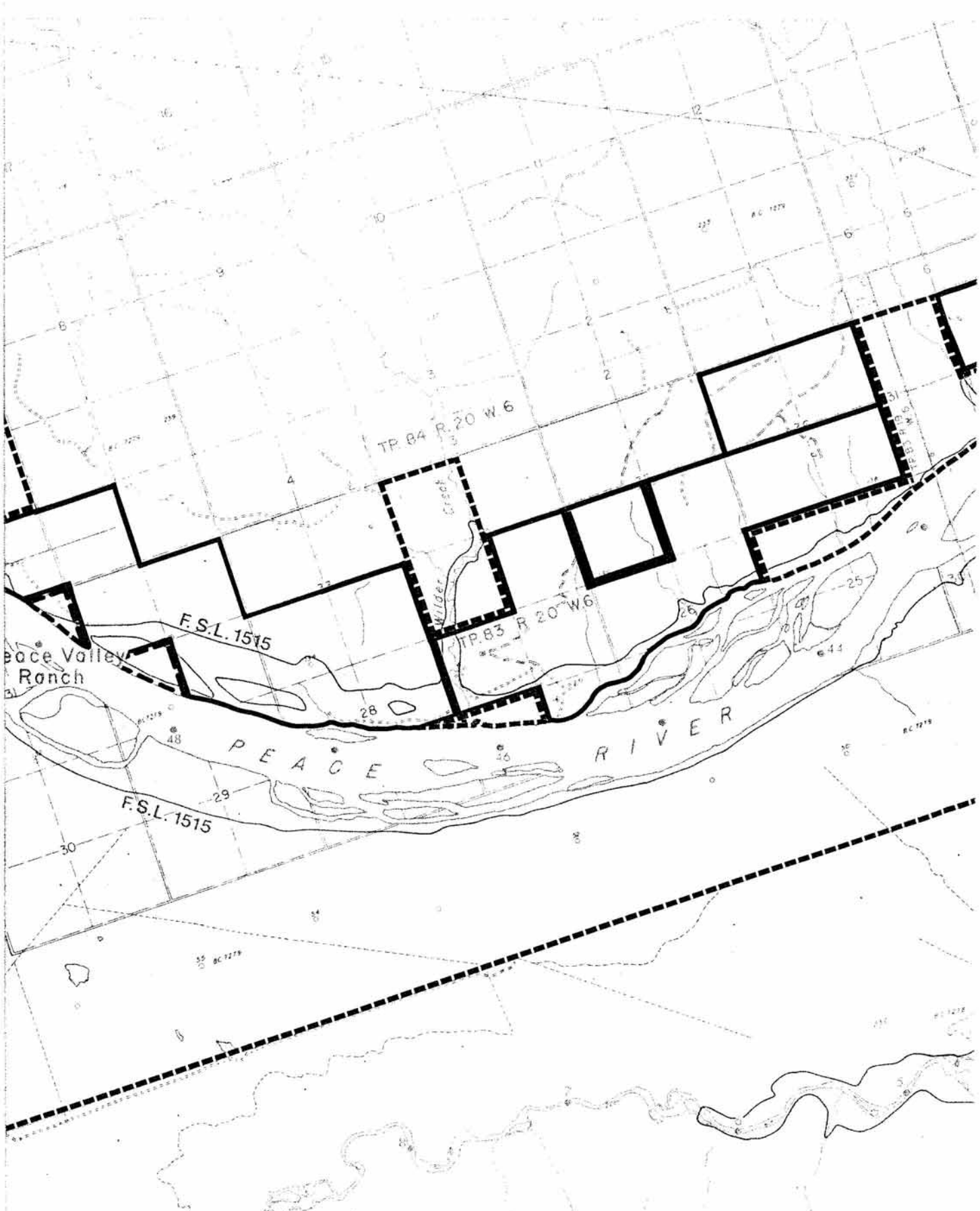


Privately owned (fee) or Managed (crown leased) Land Units in 1977



Crown Land Units in 1977

- 1. Elevation 1515' by Government of B.C.
- 2. Private land boundary

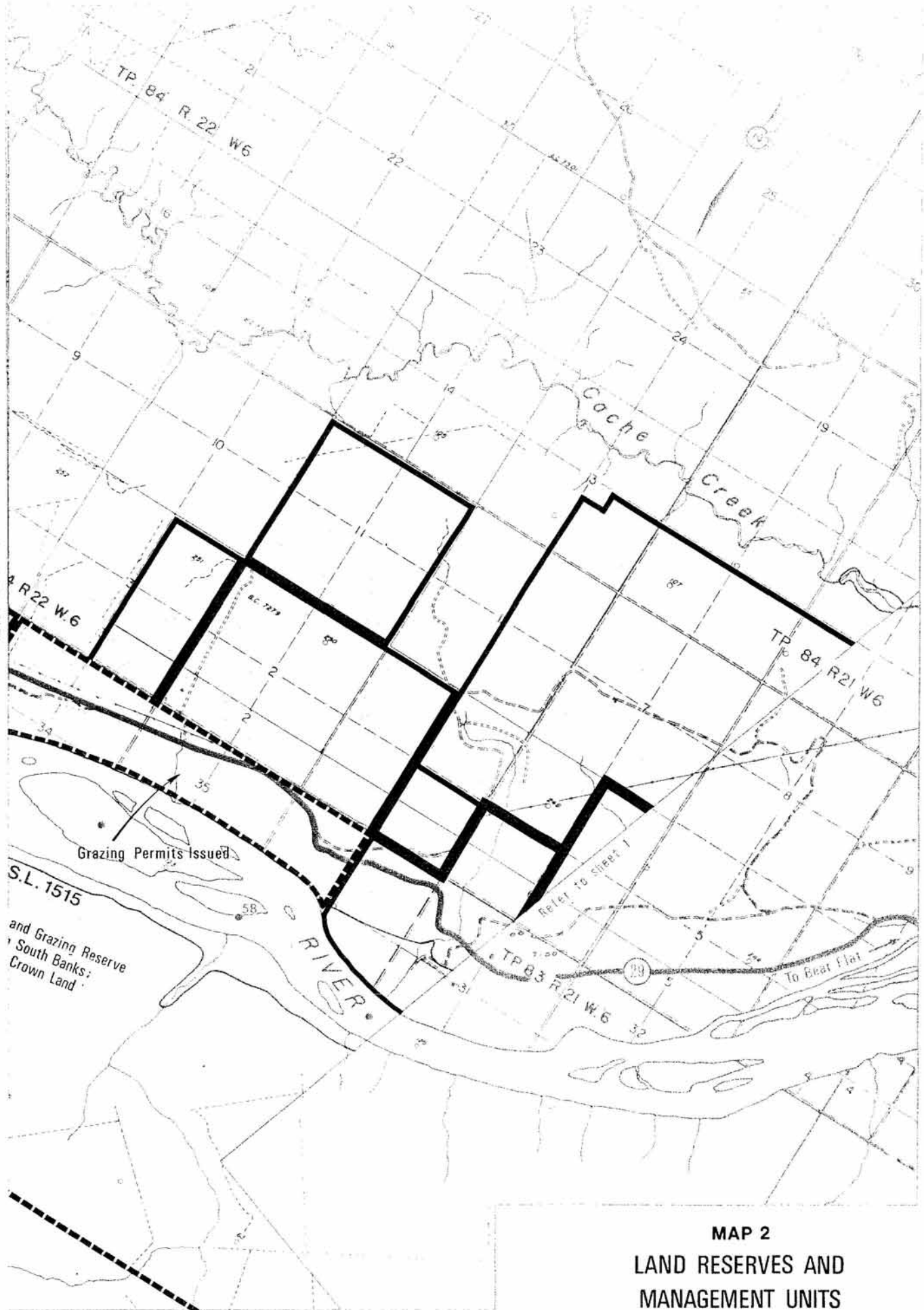


NOTES

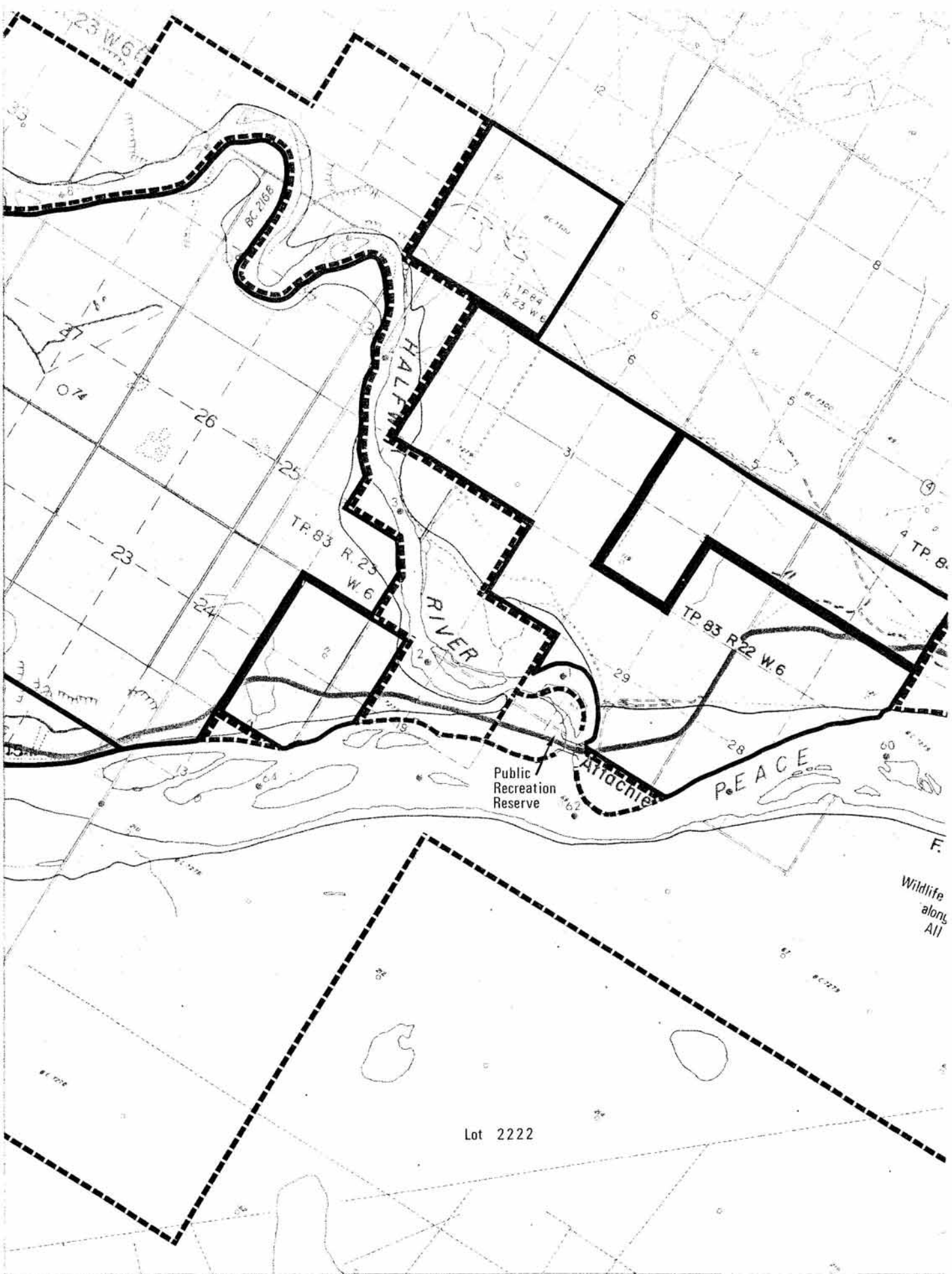
ed upon 1"=1000' Peace River Pondage Maps (Project M306)
 1972.
 aries based upon 1976 Assessment Roll, B.C. Assessment Authority Pouce Coupe.

Lot 2222

Refers to sheet 3



MAP 2
LAND RESERVES AND
MANAGEMENT UNITS

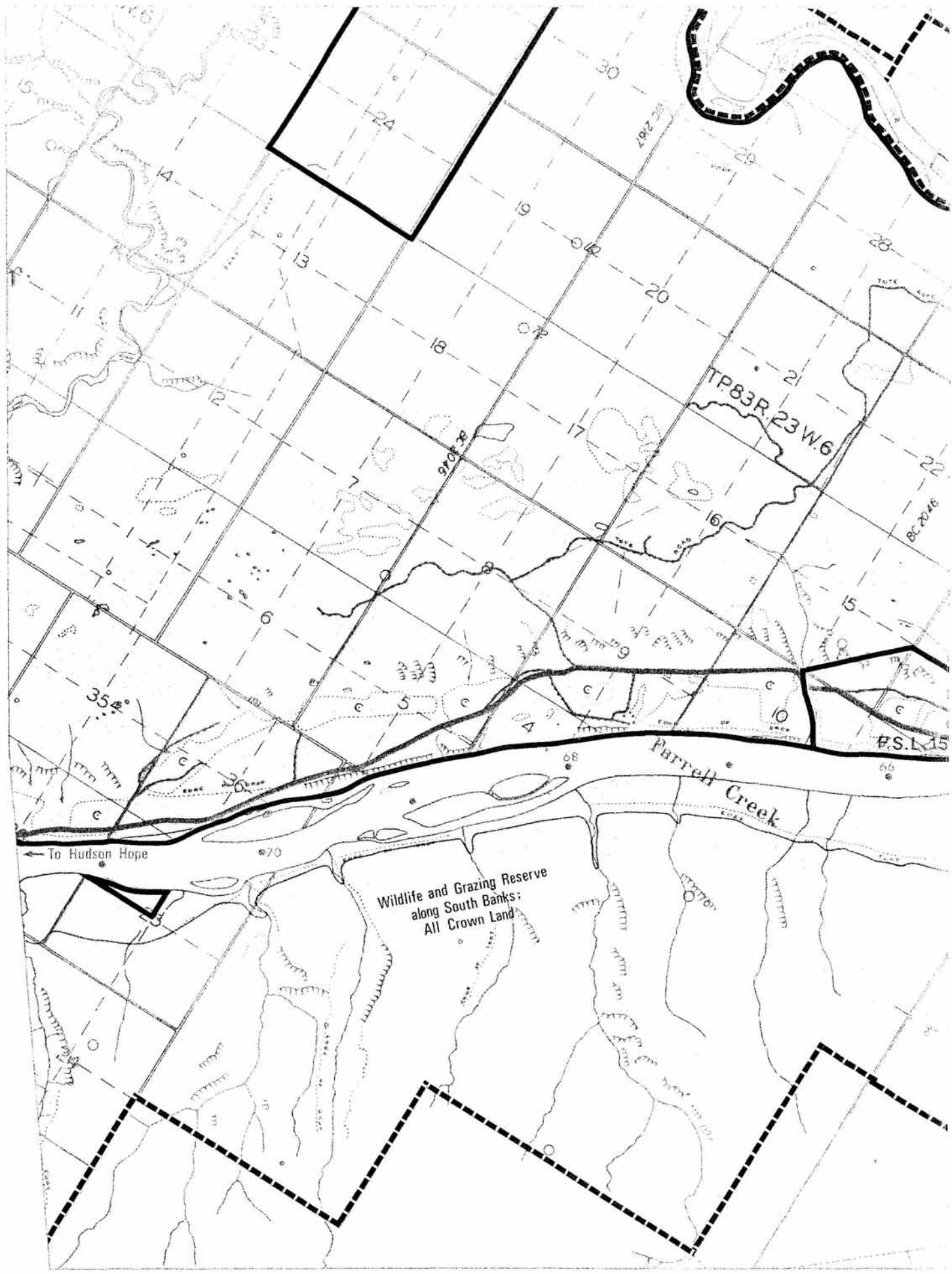


Lot 2222

Public
Recreation
Reserve

Wildlife
along
All

Refer to sheet 3



Wildlife and Grazing Reserve
along South Banks;
All Crown Land

Parrell Creek

← To Hudson Hope

35°

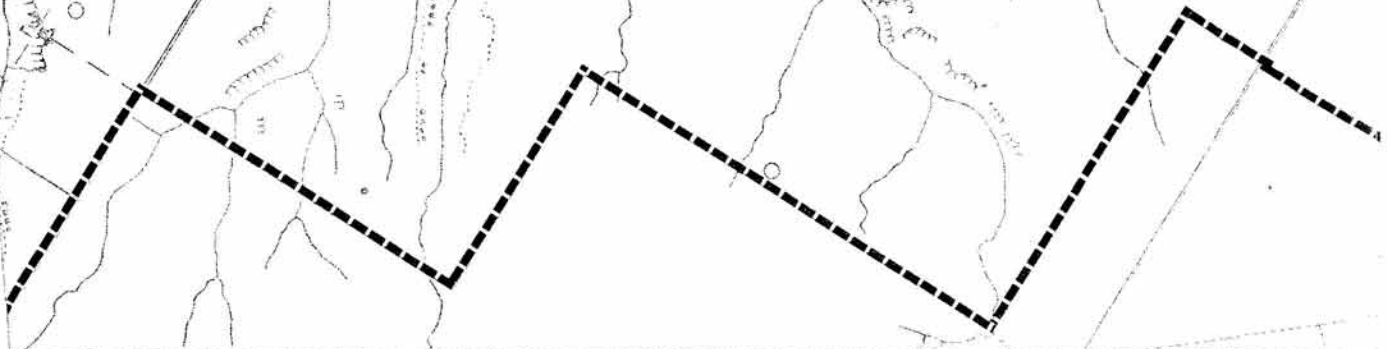
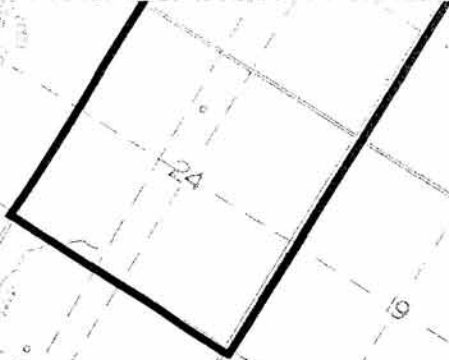
TP83R, 23W, 6

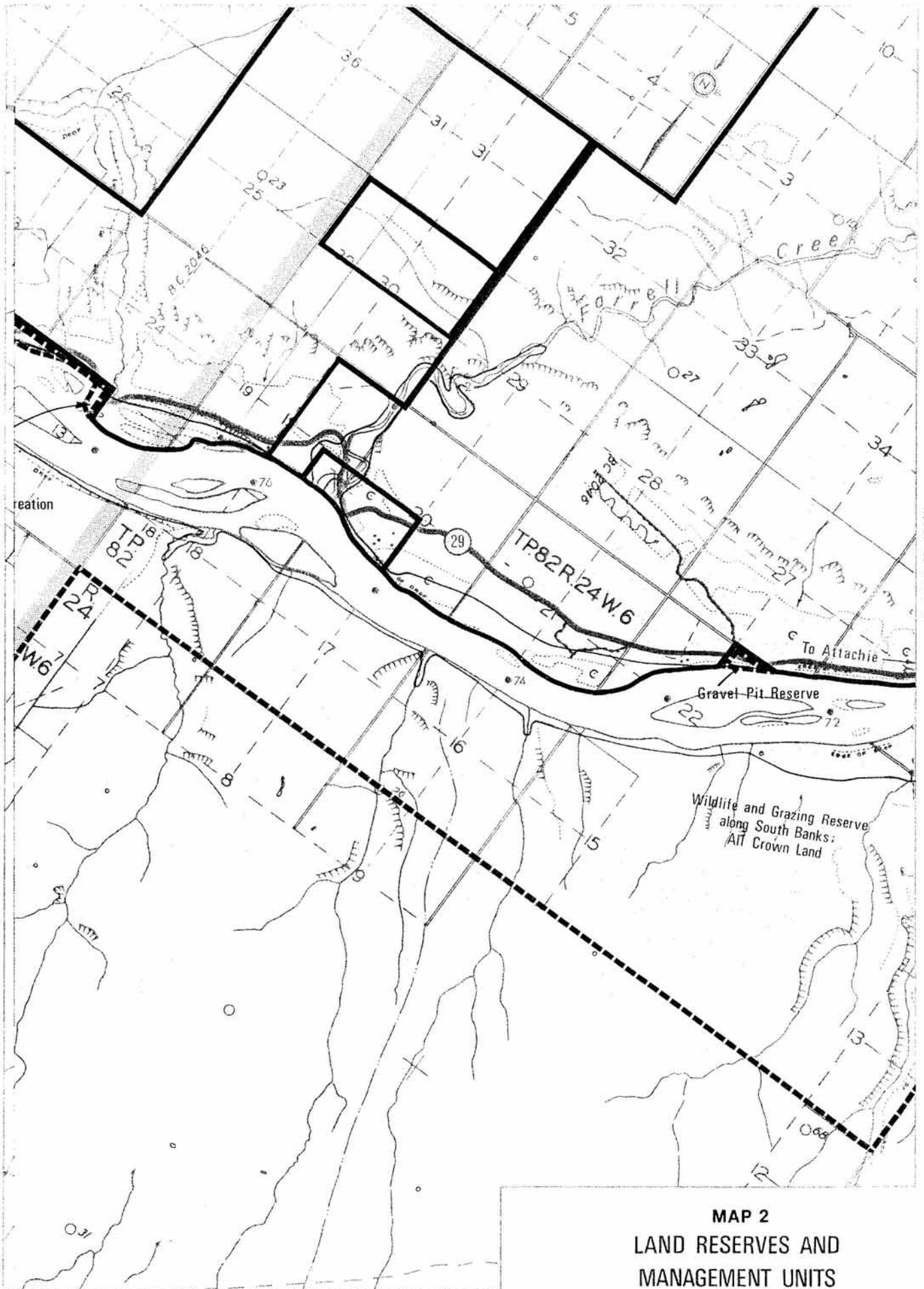
#S.L. 15

BC-2046

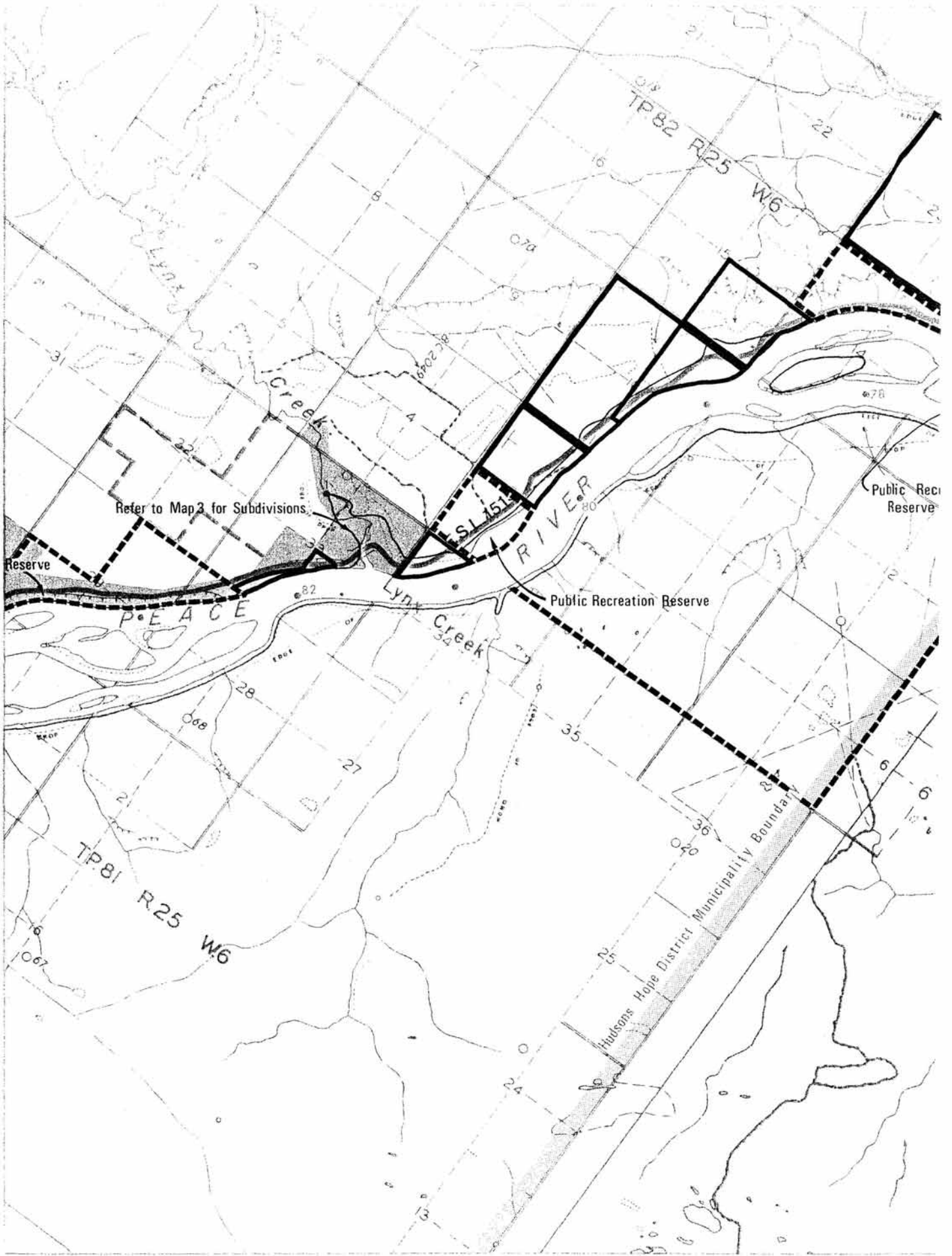
910138

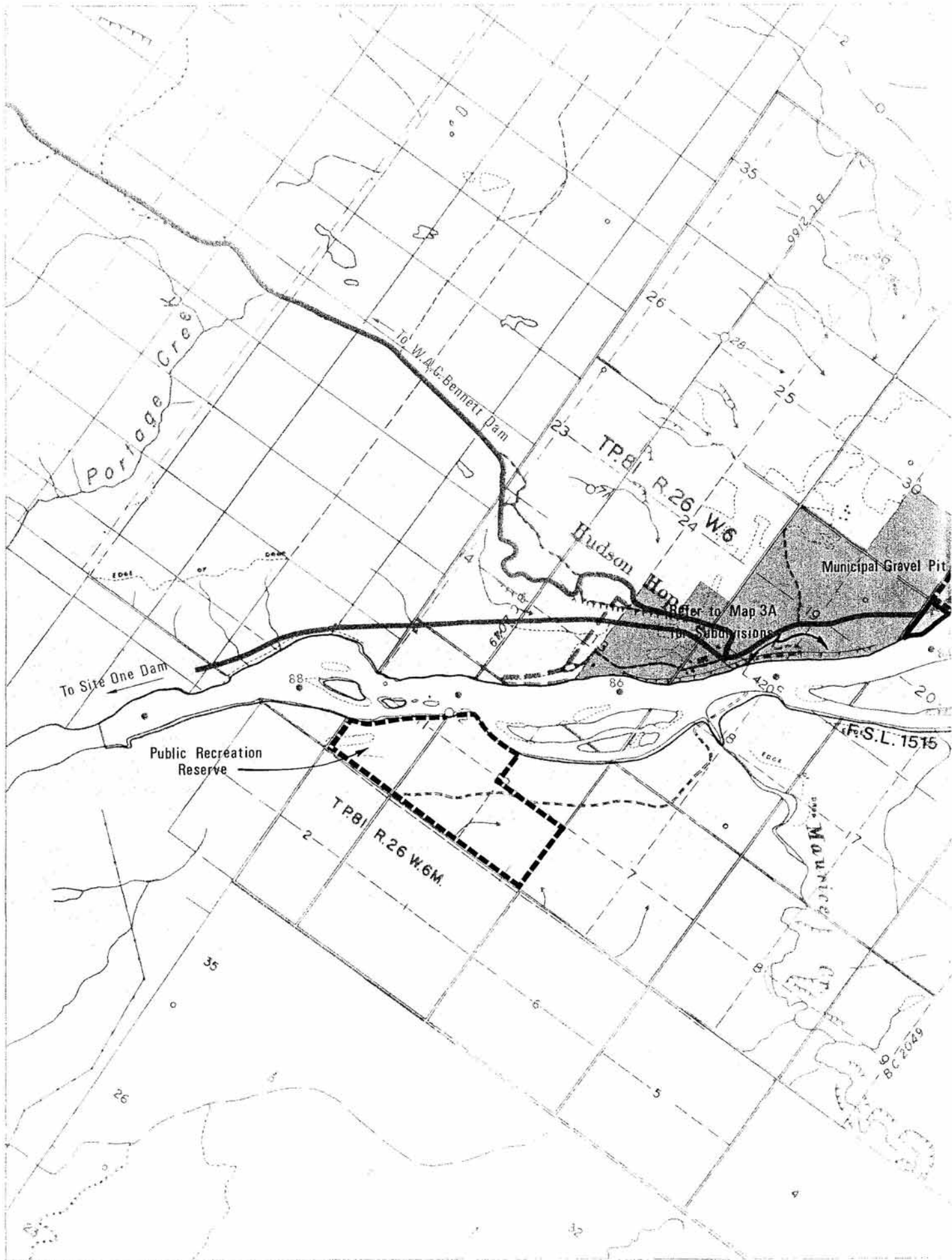
SEC 28/2





MAP 2
LAND RESERVES AND
MANAGEMENT UNITS





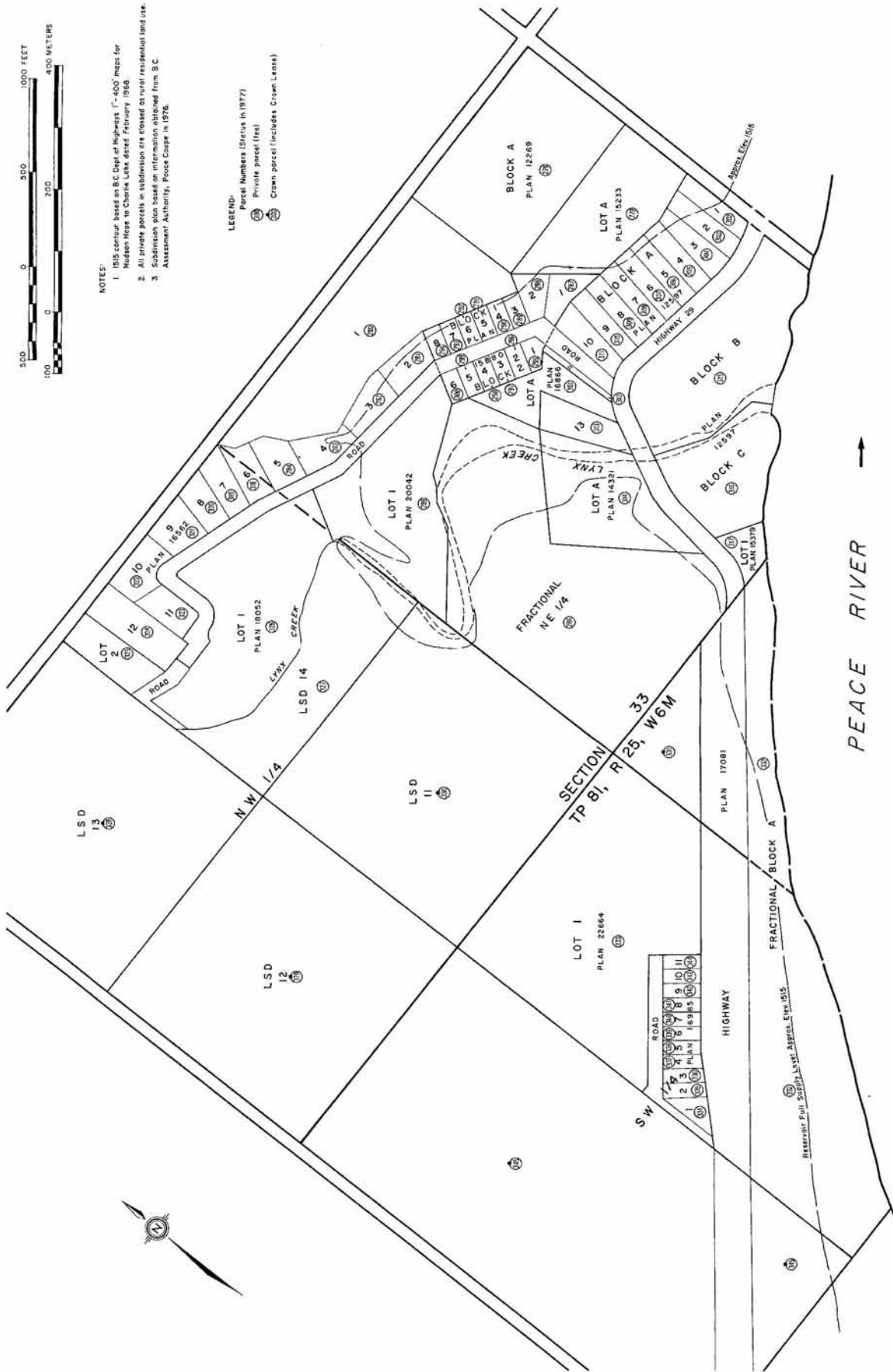


NOTES:

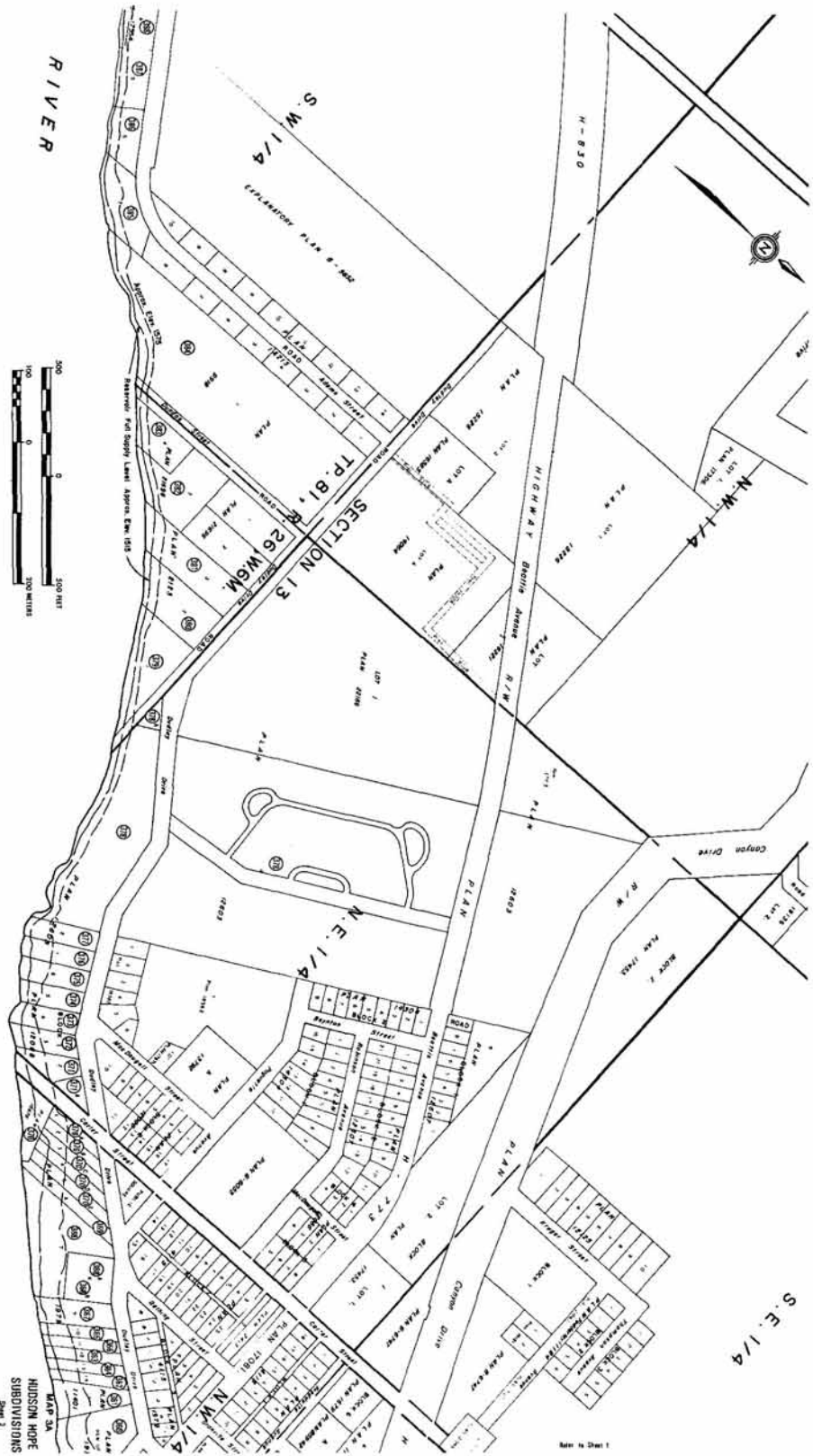
1. DLS contour based on B.C. Dept. of Highways 1"-600' maps for Hudson Hope to Chetwyne Lake dated February 1986.
2. All private parcels in subdivision are closed to rural residential land use.
3. Subdivision plan based on information obtained from B.C. Assessment Authority, Force Coupe in 1978.

LEGEND:

- Parcel Numbers (Status in 1977)
- Private parcel (Yes)
- Crown parcel (includes Crown Lease)



PEACE RIVER



LEGEND:

PARCEL NUMBERS: (status in 1977)

- Ⓢ Private (fee) Parcel
- Ⓣ Crown (including Crown Lease) Parcel

PRESENT LAND USE DESIGNATIONS:

- A Cultivated Agricultural Land
- G Grazing and Improved Pasture Land
- R Residential and Related Uses
- I Industrial Facilities and Land
- W Woodland and Undeveloped Wildland

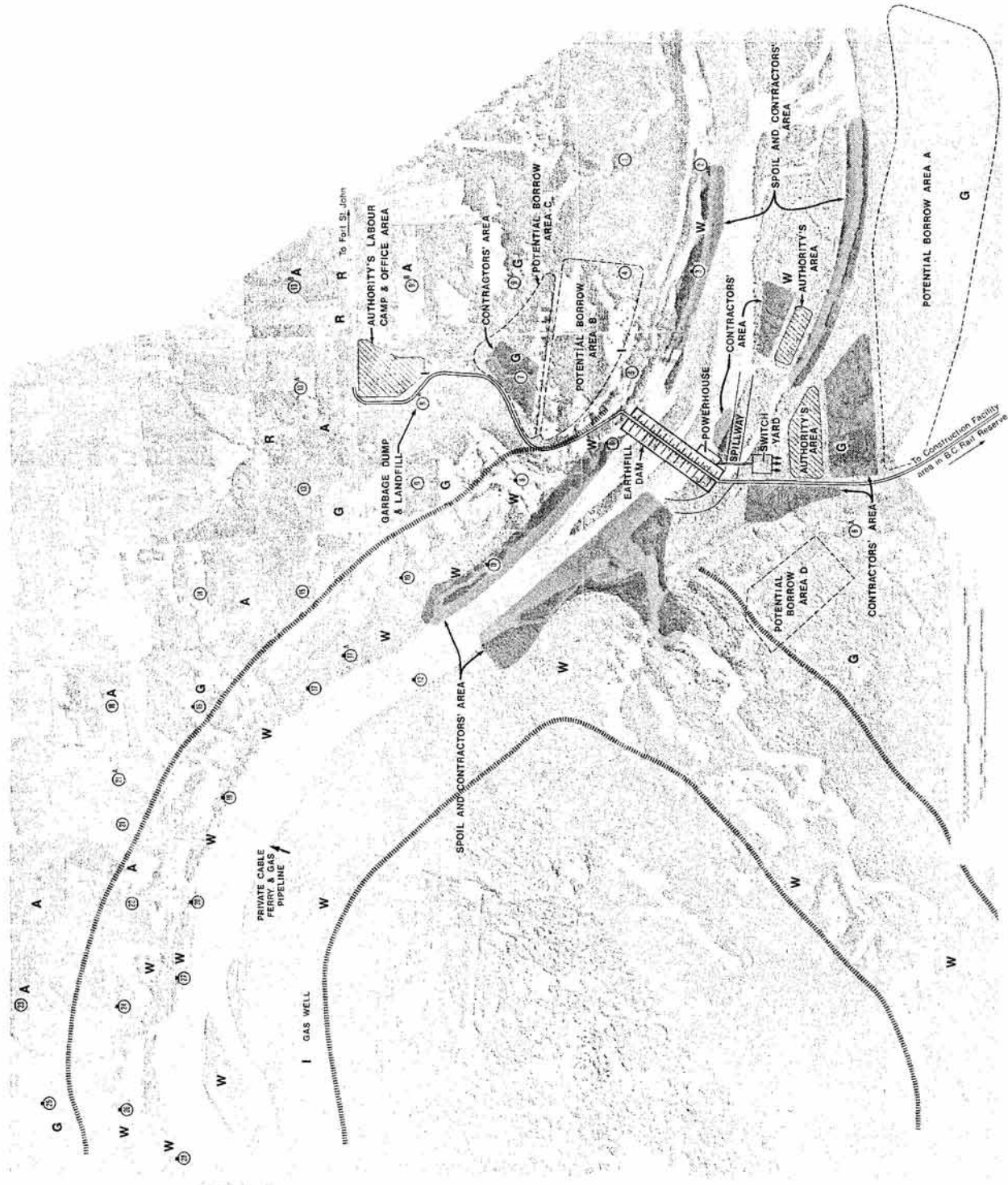
POSSIBLE ROAD RELOCATIONS:

- Highway 29
- - - Local Access Routes

FUTURE SHORELINE USE:

- Residential SafeLine (Feb. 1978)
- ⋯ High Bank Sectors

The two broad categories shown on this map are the low banks that border the river and the high banks that border the river. The low banks are the present and future shoreline. The high banks are the present and future shoreline. The present and future shoreline are shown on the map. The present and future shoreline are shown on the map. The present and future shoreline are shown on the map.

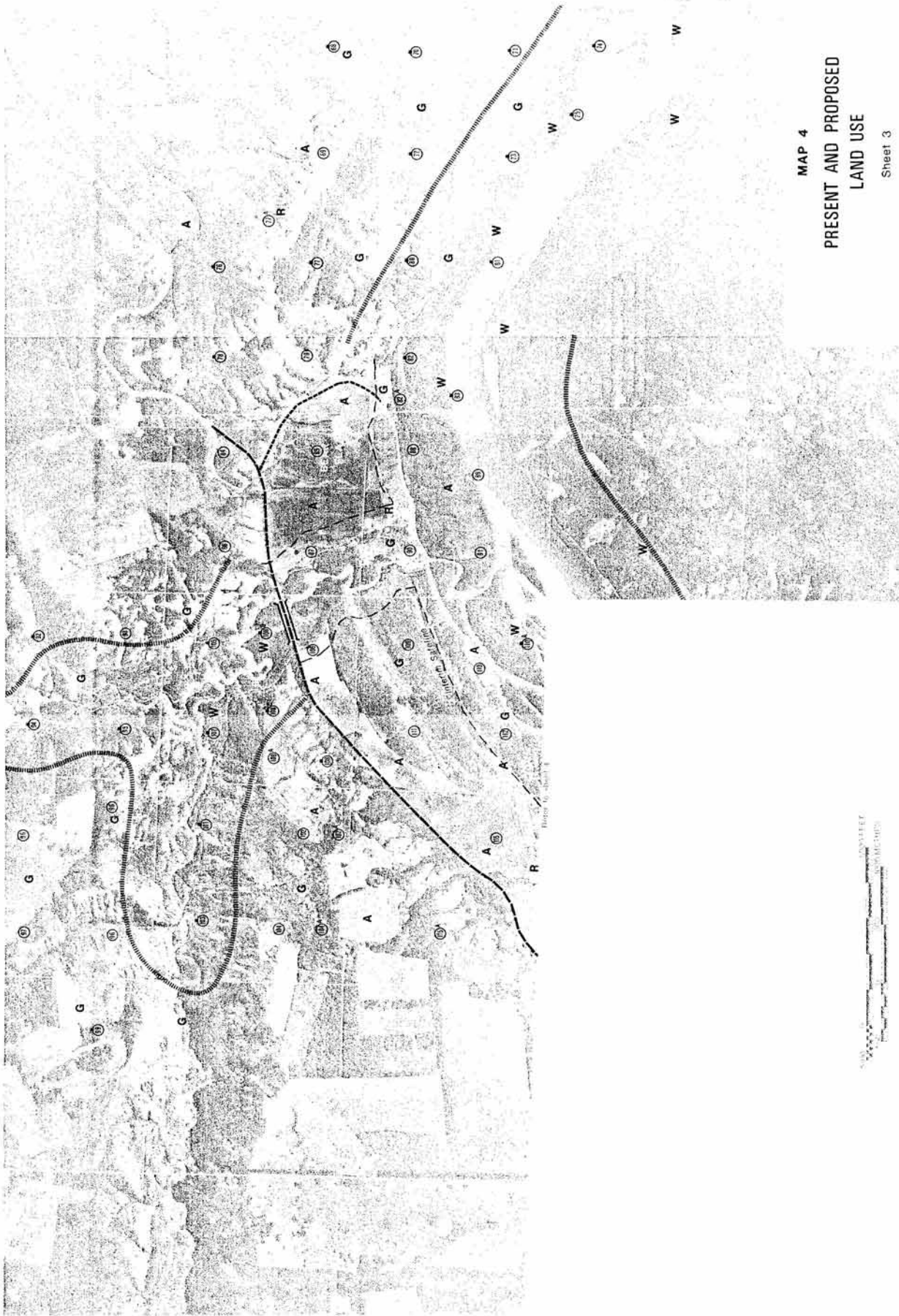




MAP 4

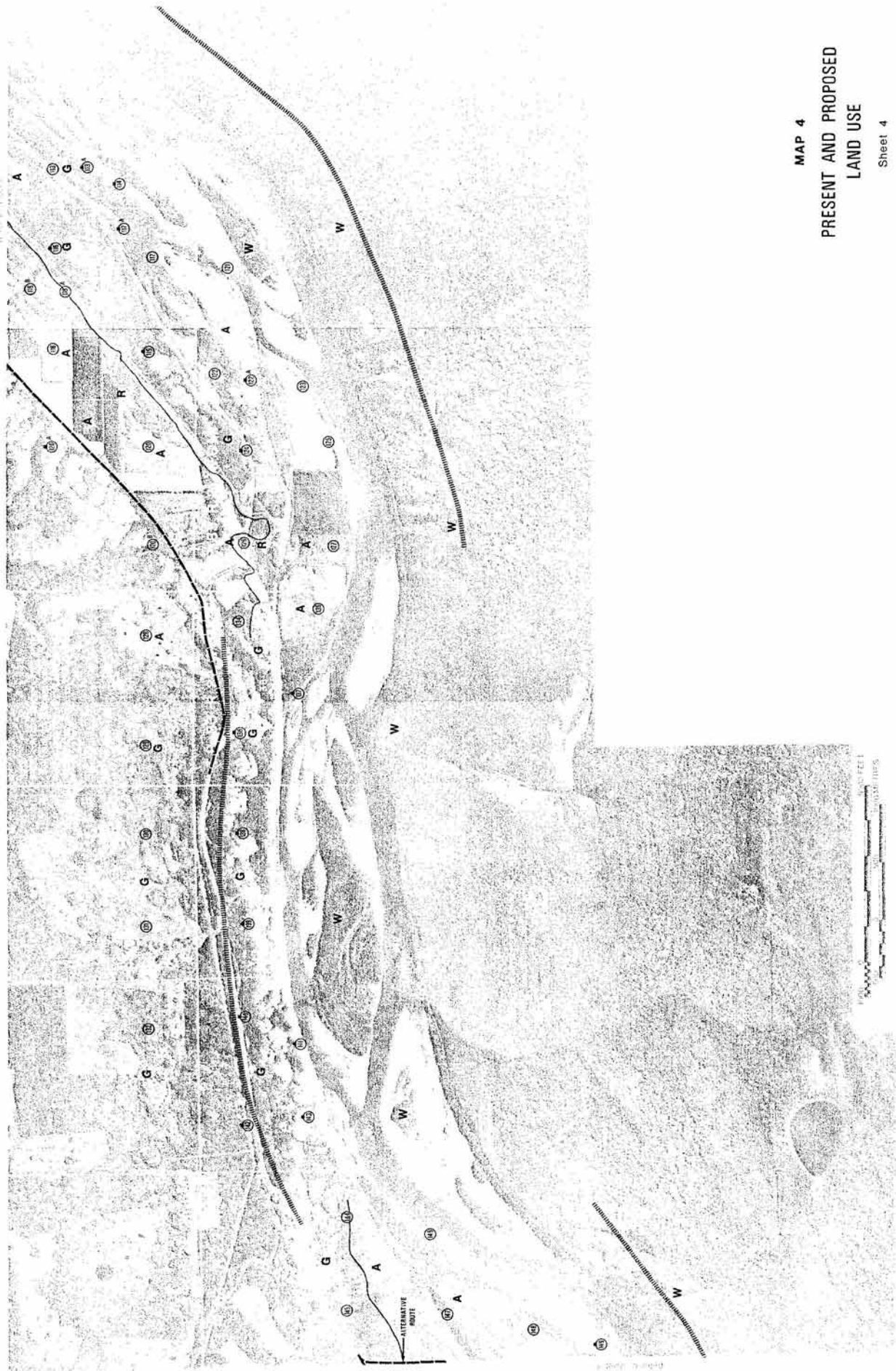
PRESENT AND PROPOSED
LAND USE

Sheet 2



MAP 4
 PRESENT AND PROPOSED
 LAND USE
 Sheet 3

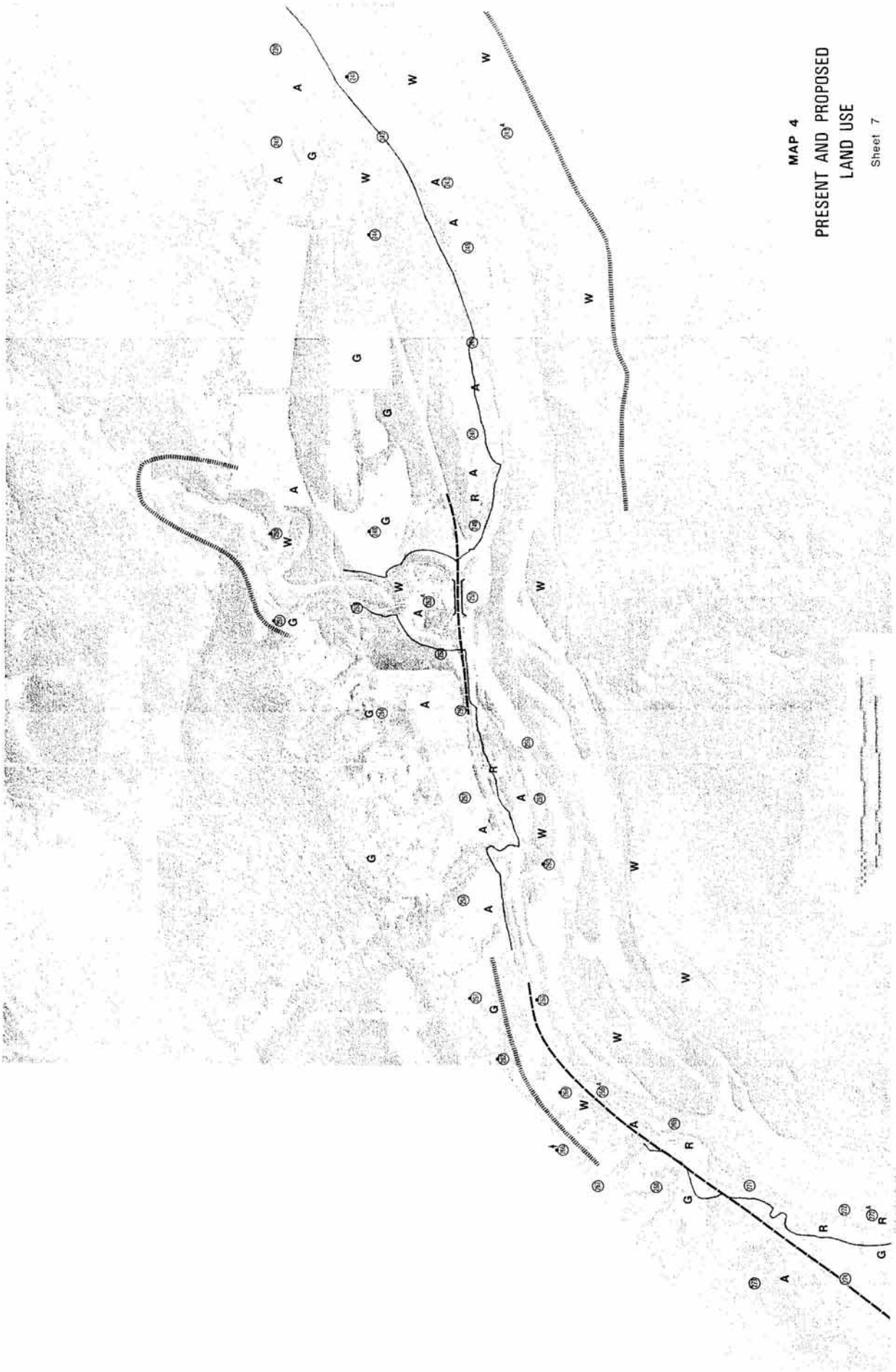
UNIVERSITY OF CALIFORNIA
 COUNTY OF SACRAMENTO



MAP 4
PRESENT AND PROPOSED
LAND USE
Sheet 4

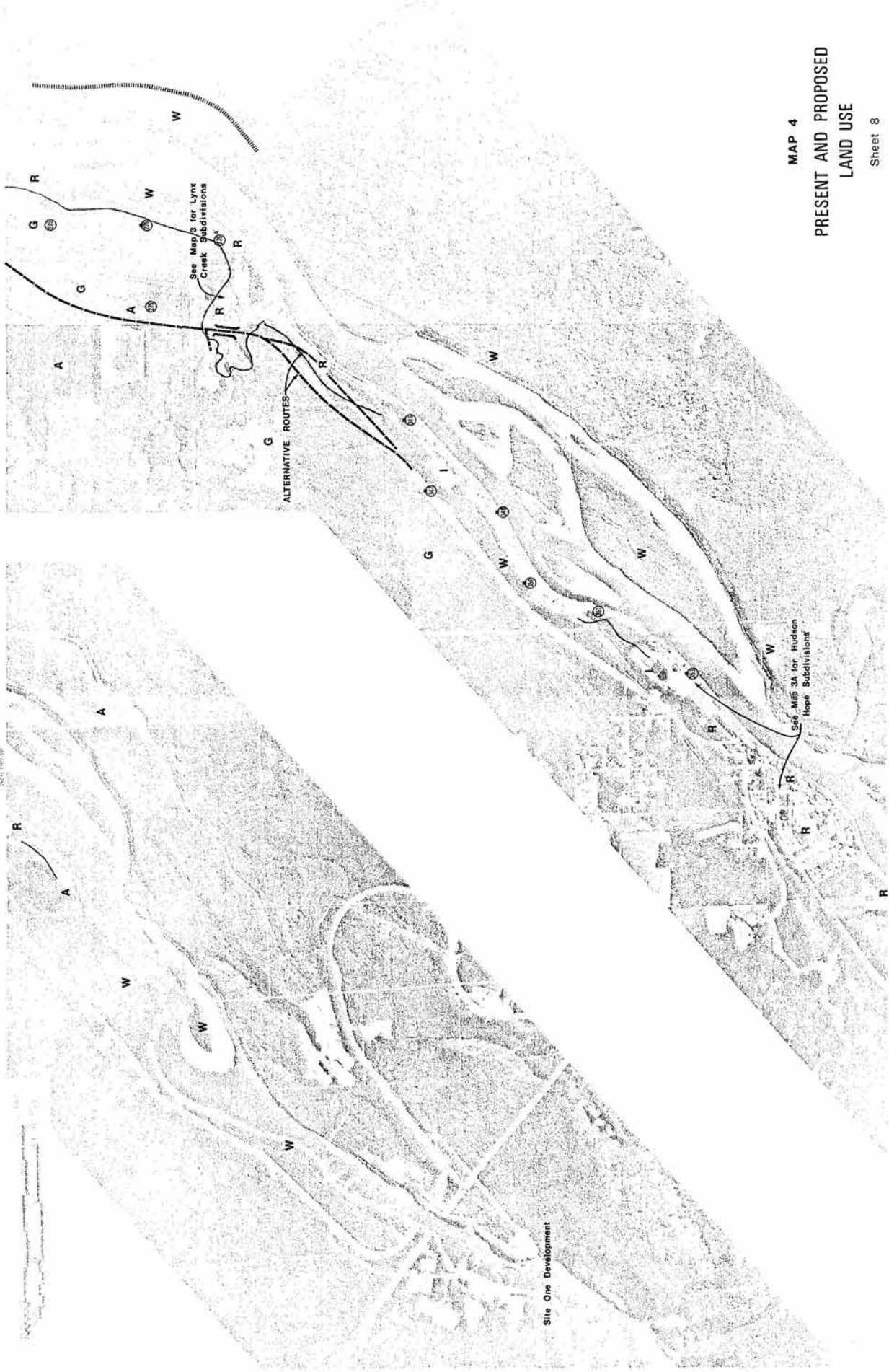


MAP 4
PRESENT AND PROPOSED
LAND USE
Sheet 5



MAP 4
PRESENT AND PROPOSED
LAND USE
Sheet 7

Sheet No. 8 of 13



MAP 4
 PRESENT AND PROPOSED
 LAND USE
 Sheet 8